

LEA Name : Plum Borough SD
Address : 900 Elicker Road
Plum , PA 15239

County : Allegheny
AUN Number : 103027503
LEA Type : SD

Annual Financial Report Accuracy Certification Statement

For Fiscal Year Ending
6/30/2024

Pennsylvania Department of Education
&
Office of Comptroller Operations

PDE-2056: Intermediate Unit
PDE-2057: School District, AVTS/CTC, Charter School,
and Special Program Jointure


CERTIFICATION: By signing this page I agree that the electronic data submitted is a complete and accurate statement of the financial operations and status of the local education agency for the fiscal year. It has been prepared in accordance with generally accepted accounting principles and established Commonwealth of PA reporting guidelines.



Chief School Administrator Signature

11/27/2024

Date



Board Secretary Signature

11/27/2024

Date

Ryan Manzer

Contact Person

manzerr@pbsd.net

Contact Person E-mail Address

(412)798-6356

Ext :

Contact Person Telephone Number

Contact Person Fax Number

Audit Certification
Annual Financial Report:
For Fiscal Year Ending **6/30/2024**
(Pursuant to PA School Code Section 218(b))

LEA Name : Plum Borough SD
AUN Number : 103027503
County : Allegheny

| |
|---|
| Audit Certification Due: 12/31/2024 |
|---|

This certification is applicable to the Annual Financial Report data submitted through the Consolidated Financial Reporting System (CFRS).

CERTIFICATION: By signing this page I agree that the financial statements of the school have been properly audited as noted above pursuant to Article XXIV, and in the auditor's professional opinion, the Annual Financial Report (PDE-2057) submitted through CFRS is materially consistent with the audited financial statements.

Chief School Administrator

Board Secretary

Signature

Date

Signature

Date

Ryan Manzer

Contact Person

manzerr@pbsd.net

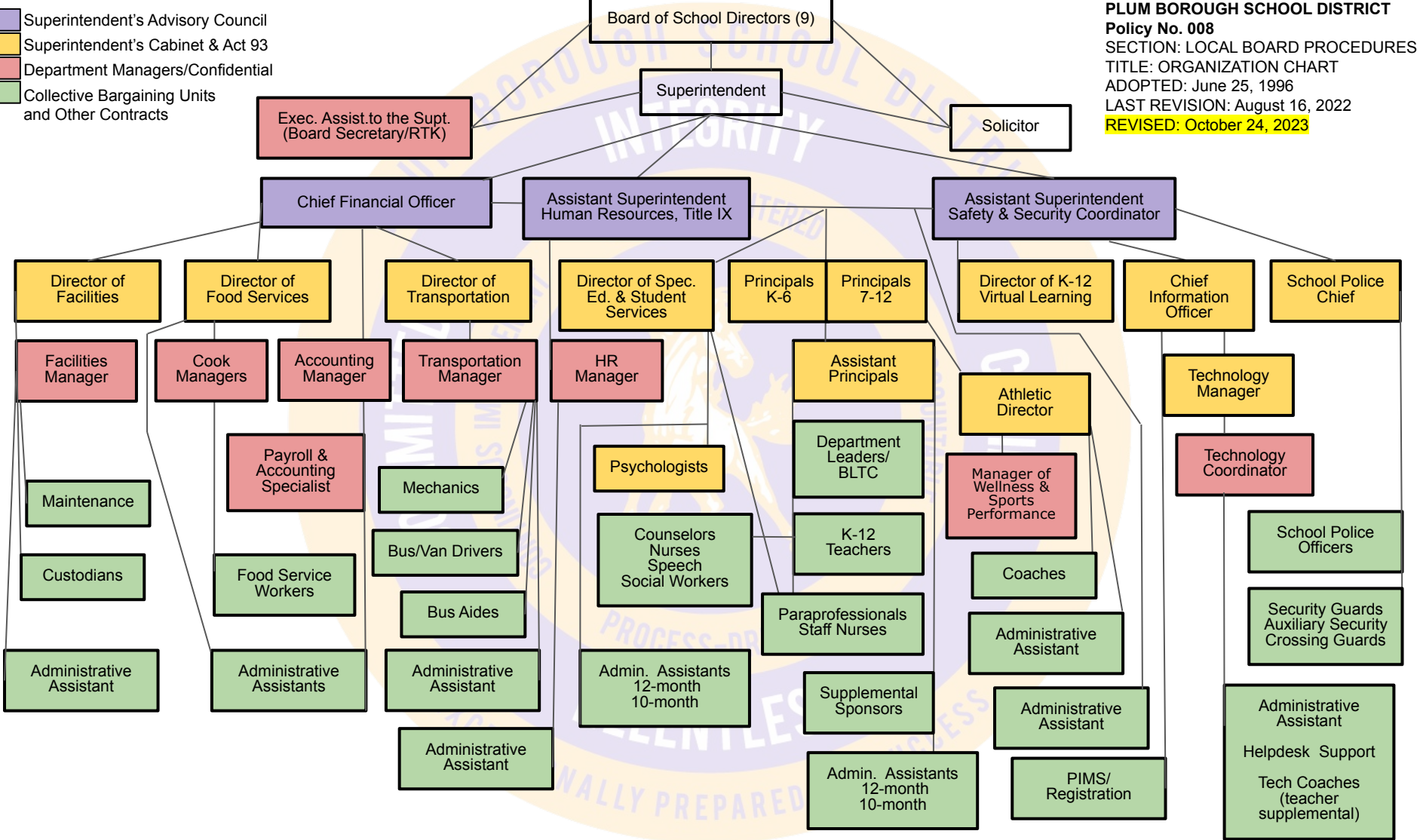
Contact Person E-mail Address

(412)798-6356

Ext :

Contact Person Telephone Number

Contact Person Fax Number





| | |
|---------|------------------|
| Book | Policy Manual |
| Section | 600 Finances |
| Title | Capitalization |
| Code | 622 |
| Status | Active |
| Adopted | October 28, 2003 |

Purpose

The Board of School Directors recognizes the need to implement the required accounting and financial reporting standards promulgated by the Governmental Accounting Standards Board (GASB). GASB Statement 34 was issued to provide new and additional information to the diverse users of district financial statements. In addition to the information contained in previous financial reporting, GASB 34 will now provide information in a highly aggregated manner looking at the long-term financial health of the school district. This new information will require school districts to account for capital assets in a manner different than previously recorded. The intent is to provide an additional set of entity-wide financial statements more similar to the private sector.

The primary objectives of GASB 34 include:

1. New entity-wide financial statements reflecting the overall financial position of the district.
2. Long-term focus for school district activities.
3. Narrative overview and analysis.
4. Information on major funds.
5. Expanded budgetary reporting.

It is important to note that the methods, calculations, and procedures for determining the budgetary process of the school district will not be affected by the implementation of the new standards. The information contained in previous financial statements will largely be in the same format.

Authority

Governmental Accounting Standards Board Statement 34.

Delegation of Responsibility

The Board of School Directors delegates to the Director of Business Affairs, in cooperation with the local independent auditor, the responsibility to coordinate the compilation and preparation of all information necessary to implement this policy in accordance with district administrative procedures.

Guidelines

Capital Assets

A capitalized asset shall be any asset acquired by donation or purchase that has a useful life of longer than one (1) year or extends the life of another capitalized asset or increases its value and meets a specific dollar threshold. At management's discretion, and in conjunction with the local auditor, capital assets purchased with long-term debt may be capitalized regardless of the specific dollar threshold for the type of class of asset acquired.

Value of Assets

All capitalized assets shall be recorded at historical cost at acquisition date or estimated cost if acquired prior to the date of the initial inventory. Any donated capital asset shall be recorded at the date of donation using the fair market value of the item at that date.

Depreciation

Depreciation shall be based on the straight-line method of depreciation over the estimated useful life of each depreciable asset or group of assets. Periodically, management shall evaluate the estimated useful life of each depreciable asset to determine if revision of such estimate is required.

Dollar Threshold

A dollar threshold for each asset shall be set at an appropriate level. Management should periodically review these levels with assistance from the local independent auditor and may any modifications necessary.



622-Attach.pdf (113 KB)

| <u>Val Number</u> | <u>Description</u> | <u>Justification</u> |
|-------------------|--|---|
| 41162 | <p>Expenditure Detail, Salaries (Object 100) and Benefits (Object 200 series): Amounts must be entered for both Salaries and Benefits.</p> <p>Please verify following fund and function codes: Fund 10 Function 2340; Fund 10 Function 2910;</p> | <p>Benefits entered for 2340 and 2910 include retiree benefits with no salary.</p> |
| 50380 | <p>CESE: The amount reported on Line 1 of the CESE exceeds the Governmental Fund special education expenditures in Function 1200. Please correct or provide a justification.</p> | <p>Amount represents special education costs contained within all respective 1000 functions including 1110 and 1190 which reflect costs of special education students operating within regular education functions.</p> |

LEA : 103027503 Plum Borough SD

Printed 11/27/2024 11:13:37 AM

| Amounts Expressed in Whole Dollars | | <u>General Fund</u> <u>(10)</u> | <u>Student Sponsored</u> <u>Activity Fund</u> <u>(21)</u> | <u>Public Purpose Trust</u> <u>(27)</u> | <u>Other Compt Approved</u> <u>(28)</u> | <u>Athletic / Activity</u> <u>(29)</u> |
|--|--|------------------------------------|---|--|--|---|
| Assets And Deferred Outflows Of Resources | | | | | | |
| Assets | | | | | | |
| 0100 | Cash and Cash Equivalents | 17,077,225 | | | | |
| 0110 | Investments | 4,855,026 | | | | |
| 0120 | Taxes Receivable | 4,333,640 | | | | |
| 0130 | Due From Other Funds | 145,192 | | | | |
| 0141 | Due From Other Governments | 598,467 | | | | |
| 0142 | State Revenue Receivable | 3,174,113 | | | | |
| 0143 | Federal Revenue Receivable | 298,200 | | | | |
| 0145 | Other Intergovernmental Revenue Receivable | | | | | |
| 0146 | Due from Primary Government | | | | | |
| 0147 | Due from Component Unit | | | | | |
| 0150 | Other Receivables | 119,475 | | | | |
| 0170 | Inventories | | | | | |
| 0180 | Prepaid Expenses (Expenditures) | 586,591 | | | | |
| 0190 | Other Current Assets | | | | | |
| Total Assets | | \$31,187,929 | | | | |
| 0910 | Deferred Outflows of Resources | | | | | |
| Total Assets And Deferred Outflows Of Resources | | \$31,187,929 | | | | |

LEA : 103027503 Plum Borough SD

Printed 11/27/2024 11:13:37 AM

| Amounts Expressed in Whole Dollars | | <u>Capital Reserve (690.</u> <u>1850)</u> <u>(31)</u> | <u>Capital Reserve (1431)</u> <u>(32)</u> | <u>Other Capital Projects</u> <u>Fund</u> <u>(39)</u> | <u>Debt Service</u> <u>(40)</u> | <u>Permanent</u> <u>(90)</u> |
|--|--|---|--|---|------------------------------------|---------------------------------|
| Assets And Deferred Outflows Of Resources | | | | | | |
| Assets | | | | | | |
| 0100 | Cash and Cash Equivalents | | | | | |
| 0110 | Investments | | | | | |
| 0120 | Taxes Receivable | | | | | |
| 0130 | Due From Other Funds | | | 2,952,813 | | |
| 0141 | Due From Other Governments | | | | | |
| 0142 | State Revenue Receivable | | | | | |
| 0143 | Federal Revenue Receivable | | | | | |
| 0145 | Other Intergovernmental Revenue Receivable | | | | | |
| 0146 | Due from Primary Government | | | | | |
| 0147 | Due from Component Unit | | | | | |
| 0150 | Other Receivables | | | | | |
| 0170 | Inventories | | | | | |
| 0180 | Prepaid Expenses (Expenditures) | | | | | |
| 0190 | Other Current Assets | | | | | |
| Total Assets | | | | \$2,952,813 | | |
| 0910 | Deferred Outflows of Resources | | | | | |
| Total Assets And Deferred Outflows Of Resources | | | | \$2,952,813 | | |

LEA : 103027503 Plum Borough SD

Printed 11/27/2024 11:13:37 AM

| Amounts Expressed in Whole Dollars | | <u>Total Governmental</u> <u>Funds</u> |
|--|--|---|
| Assets And Deferred Outflows Of Resources | | |
| Assets | | |
| 0100 Cash and Cash Equivalents | | 17,077,225 |
| 0110 Investments | | 4,855,026 |
| 0120 Taxes Receivable | | 4,333,640 |
| 0130 Due From Other Funds | | 3,098,005 |
| 0141 Due From Other Governments | | 598,467 |
| 0142 State Revenue Receivable | | 3,174,113 |
| 0143 Federal Revenue Receivable | | 298,200 |
| 0145 Other Intergovernmental Revenue Receivable | | |
| 0146 Due from Primary Government | | |
| 0147 Due from Component Unit | | |
| 0150 Other Receivables | | 119,475 |
| 0170 Inventories | | |
| 0180 Prepaid Expenses (Expenditures) | | 586,591 |
| 0190 Other Current Assets | | |
| Total Assets | | \$34,140,742 |
| 0910 Deferred Outflows of Resources | | |
| Total Assets And Deferred Outflows Of Resources | | \$34,140,742 |

LEA : 103027503 Plum Borough SD

Printed 11/27/2024 11:13:37 AM

| Amounts Expressed in Whole Dollars | <u>General Fund</u> <u>(10)</u> | <u>Student Sponsored</u> <u>Activity Fund</u> <u>(21)</u> | <u>Public Purpose Trust</u> <u>(27)</u> | <u>Other Compt Approved</u> <u>(28)</u> | <u>Athletic / Activity</u> <u>(29)</u> |
|---|------------------------------------|---|--|--|---|
| Liabilities And Deferred Inflows Of Resources And Fund Balances | | | | | |
| Liabilities | | | | | |
| 0400 Due to Other Funds | | | | | |
| 0411 Due to Other Governments | 2,953,613 | | | | |
| 0412 Due to Primary Government | | | | | |
| 0413 Due to Component Unit | | | | | |
| 0420 Accounts Payable | 1,202,975 | | | | |
| 0430 Contracts Payable | | | | | |
| 0440 Current Portion of Long-Term Debt | | | | | |
| 0450 Short-Term Payables | | | | | |
| 0461 Accrued Salaries and Benefits | 4,845,197 | | | | |
| 0462 Payroll Deductions and Withholding | 2,681,188 | | | | |
| 0480 Unearned Revenues | 3,584,340 | | | | |
| 0490 Other Current Liabilities | | | | | |
| Total Liabilities | \$15,267,313 | | | | |
| 0950 Deferred Inflows of Resources | | | | | |
| Fund Balances | | | | | |
| 0810 Nonspendable Fund Balance | 586,591 | | | | |
| 0820 Restricted Fund Balance | | | | | |
| 0830 Committed Fund Balance | 9,389,195 | | | | |
| 0840 Assigned Fund Balance | | | | | |
| 0850 Unassigned Fund Balance | 5,944,830 | | | | |
| Total Fund Balances | \$15,920,616 | | | | |
| Total Liabilities, Deferred Inflows Of Resources And Fund Balances | \$31,187,929 | | | | |

LEA : 103027503 Plum Borough SD

| Amounts Expressed in Whole Dollars | | <u>Capital Reserve (690.</u> <u>1850)</u> <u>(31)</u> | <u>Capital Reserve (1431)</u> <u>(32)</u> | <u>Other Capital Projects</u> <u>Fund</u> <u>(39)</u> | <u>Debt Service</u> <u>(40)</u> | <u>Permanent</u> <u>(90)</u> |
|--|------------------------------------|---|--|---|------------------------------------|---------------------------------|
| Liabilities And Deferred Inflows Of Resources And Fund Balances | | | | | | |
| Liabilities | | | | | | |
| 0400 | Due to Other Funds | | | | | |
| 0411 | Due to Other Governments | | | | | |
| 0412 | Due to Primary Government | | | | | |
| 0413 | Due to Component Unit | | | | | |
| 0420 | Accounts Payable | | | 160,384 | | |
| 0430 | Contracts Payable | | | | | |
| 0440 | Current Portion of Long-Term Debt | | | | | |
| 0450 | Short-Term Payables | | | | | |
| 0461 | Accrued Salaries and Benefits | | | | | |
| 0462 | Payroll Deductions and Withholding | | | | | |
| 0480 | Unearned Revenues | | | | | |
| 0490 | Other Current Liabilities | | | | | |
| Total Liabilities | | | | \$160,384 | | |
| 0950 | Deferred Inflows of Resources | | | | | |
| Fund Balances | | | | | | |
| 0810 | Nonspendable Fund Balance | | | | | |
| 0820 | Restricted Fund Balance | | | 2,792,429 | | |
| 0830 | Committed Fund Balance | | | | | |
| 0840 | Assigned Fund Balance | | | | | |
| 0850 | Unassigned Fund Balance | | | | | |
| Total Fund Balances | | | | \$2,792,429 | | |
| Total Liabilities, Deferred Inflows Of Resources And Fund Balances | | | | \$2,952,813 | | |

LEA : 103027503 Plum Borough SD

Printed 11/27/2024 11:13:37 AM

| Amounts Expressed in Whole Dollars | | <u>Total Governmental</u> <u>Funds</u> |
|---|---------------------|---|
| Liabilities And Deferred Inflows Of Resources And Fund Balances | | |
| Liabilities | | |
| 0400 Due to Other Funds | | |
| 0411 Due to Other Governments | 2,953,613 | |
| 0412 Due to Primary Government | | |
| 0413 Due to Component Unit | | |
| 0420 Accounts Payable | 1,363,359 | |
| 0430 Contracts Payable | | |
| 0440 Current Portion of Long-Term Debt | | |
| 0450 Short-Term Payables | | |
| 0461 Accrued Salaries and Benefits | 4,845,197 | |
| 0462 Payroll Deductions and Withholding | 2,681,188 | |
| 0480 Unearned Revenues | 3,584,340 | |
| 0490 Other Current Liabilities | | |
| Total Liabilities | \$15,427,697 | |
| 0950 Deferred Inflows of Resources | | |
| Fund Balances | | |
| 0810 Nonspendable Fund Balance | 586,591 | |
| 0820 Restricted Fund Balance | 2,792,429 | |
| 0830 Committed Fund Balance | 9,389,195 | |
| 0840 Assigned Fund Balance | | |
| 0850 Unassigned Fund Balance | 5,944,830 | |
| Total Fund Balances | \$18,713,045 | |
| Total Liabilities, Deferred Inflows Of Resources And Fund Balances | \$34,140,742 | |

| Amounts Expressed in Whole Dollars | <u>General Fund</u> <u>(10)</u> | <u>Student Sponsored</u> <u>Activity Fund</u> <u>(21)</u> | <u>Public Purpose Trust</u> <u>(27)</u> | <u>Other Compt Approved</u> <u>(28)</u> | <u>Athletic / Activity</u> <u>(29)</u> |
|---|------------------------------------|---|--|--|---|
| Revenues | | | | | |
| 6000 Revenue from Local Sources | 41,536,240 | | | | |
| 7000 Revenue from State Sources | 29,721,807 | | | | |
| 8000 Revenue from Federal Sources | 2,197,420 | | | | |
| Total Revenues | \$73,455,467 | | | | |
| Expenditures | | | | | |
| 1000 Instruction | 39,077,047 | | | | |
| 2000 Support Services | 19,949,171 | | | | |
| 3000 Operation of Non-Instructional Services | 1,857,896 | | | | |
| 4000 Facilities Acquisition, Construction and Improvement Services | | | | | |
| 5110 Debt Service | 8,168,263 | | | | |
| 5130 Refund of Prior Year Revenues / Receipts | 205,458 | | | | |
| 5140 Leases and Other Right-to-Use Arrangements | | | | | |
| Total Expenditures | \$69,257,835 | | | | |
| Excess (Deficiency) Of Revenues Over Expenditures | \$4,197,632 | | | | |
| Other Financing Sources (Uses) | | | | | |
| 9110 Face Value of Bonds Issued | | | | | |
| 9120 Proceeds from Refunding of Bonds | | | | | |
| 9130 Bond Premiums | | | | | |
| 9200 Proceeds from Extended Term Financing, Leases, and Other Right-to-Use Arrangements | | | | | |
| 9300 Interfund Transfers - IN | | | | | |
| 9400 Sale of or Compensation for Loss of Fixed Assets | 22,329 | | | | |
| 9710 Transfers from Component Units | | | | | |
| 9720 Transfers from Primary Governments | | | | | |
| 9910 Other Financing Sources Not Listed in the 9000 Series | | | | | |
| 9990 Insurance Recoveries | 43,093 | | | | |
| 5120 Debt Service – Refunded Bonds | | | | | |
| 5150 Bond Discounts | | | | | |
| 5200 Interfund Transfers – Out | 2,400,000 | | | | |
| 5300 Transfers Out to Component Units/Primary Governments | | | | | |
| Total Other Financing Sources (Uses) | (\$2,334,578) | | | | |

| Amounts Expressed in Whole Dollars | | <u>Capital Reserve (690.</u> <u>1850)</u> <u>(31)</u> | <u>Capital Reserve (1431)</u> <u>(32)</u> | <u>Other Capital Projects</u> <u>Fund</u> <u>(39)</u> | <u>Debt Service</u> <u>(40)</u> | <u>Permanent</u> <u>(90)</u> |
|--|--|---|--|---|------------------------------------|---------------------------------|
| Revenues | | | | | | |
| 6000 | Revenue from Local Sources | | | | | |
| 7000 | Revenue from State Sources | | | | | |
| 8000 | Revenue from Federal Sources | | | | | |
| Total Revenues | | | | | | |
| Expenditures | | | | | | |
| 1000 | Instruction | | | | | |
| 2000 | Support Services | | | 1,091,970 | | |
| 3000 | Operation of Non-Instructional Services | | | | | |
| 4000 | Facilities Acquisition, Construction and Improvement Services | | | 334,701 | | |
| 5110 | Debt Service | | | | | |
| 5130 | Refund of Prior Year Revenues / Receipts | | | | | |
| 5140 | Leases and Other Right-to-Use Arrangements | | | | | |
| Total Expenditures | | | | \$1,426,671 | | |
| Excess (Deficiency) Of Revenues Over Expenditures | | | | (\$1,426,671) | | |
| Other Financing Sources (Uses) | | | | | | |
| 9110 | Face Value of Bonds Issued | | | | | |
| 9120 | Proceeds from Refunding of Bonds | | | | | |
| 9130 | Bond Premiums | | | | | |
| 9200 | Proceeds from Extended Term Financing, Leases, and Other Right-to-Use Arrangements | | | | | |
| 9300 | Interfund Transfers - IN | | | 2,400,000 | | |
| 9400 | Sale of or Compensation for Loss of Fixed Assets | | | | | |
| 9710 | Transfers from Component Units | | | | | |
| 9720 | Transfers from Primary Governments | | | | | |
| 9910 | Other Financing Sources Not Listed in the 9000 Series | | | | | |
| 9990 | Insurance Recoveries | | | | | |
| 5120 | Debt Service – Refunded Bonds | | | | | |
| 5150 | Bond Discounts | | | | | |
| 5200 | Interfund Transfers – Out | | | | | |
| 5300 | Transfers Out to Component Units/Primary Governments | | | | | |
| Total Other Financing Sources (Uses) | | | | \$2,400,000 | | |

LEA : 103027503 Plum Borough SD

Printed 11/27/2024 11:13:46 AM

| Amounts Expressed in Whole Dollars | | <u>Total Governmental Funds</u> |
|--|--|---------------------------------|
| Revenues | | |
| 6000 | Revenue from Local Sources | 41,536,240 |
| 7000 | Revenue from State Sources | 29,721,807 |
| 8000 | Revenue from Federal Sources | 2,197,420 |
| Total Revenues | | \$73,455,467 |
| Expenditures | | |
| 1000 | Instruction | 39,077,047 |
| 2000 | Support Services | 21,041,141 |
| 3000 | Operation of Non-Instructional Services | 1,857,896 |
| 4000 | Facilities Acquisition, Construction and Improvement Services | 334,701 |
| 5110 | Debt Service | 8,168,263 |
| 5130 | Refund of Prior Year Revenues / Receipts | 205,458 |
| 5140 | Leases and Other Right-to-Use Arrangements | |
| Total Expenditures | | \$70,684,506 |
| Excess (Deficiency) Of Revenues Over Expenditures | | \$2,770,961 |
| Other Financing Sources (Uses) | | |
| 9110 | Face Value of Bonds Issued | |
| 9120 | Proceeds from Refunding of Bonds | |
| 9130 | Bond Premiums | |
| 9200 | Proceeds from Extended Term Financing, Leases, and Other Right-to-Use Arrangements | |
| 9300 | Interfund Transfers - IN | 2,400,000 |
| 9400 | Sale of or Compensation for Loss of Fixed Assets | 22,329 |
| 9710 | Transfers from Component Units | |
| 9720 | Transfers from Primary Governments | |
| 9910 | Other Financing Sources Not Listed in the 9000 Series | |
| 9990 | Insurance Recoveries | 43,093 |
| 5120 | Debt Service – Refunded Bonds | |
| 5150 | Bond Discounts | |
| 5200 | Interfund Transfers – Out | 2,400,000 |
| 5300 | Transfers Out to Component Units/Primary Governments | |
| Total Other Financing Sources (Uses) | | \$65,422 |

| Amounts Expressed in Whole Dollars | | <u>General Fund</u> <u>(10)</u> | <u>Student Sponsored</u> <u>Activity Fund</u> <u>(21)</u> | <u>Public Purpose Trust</u> <u>(27)</u> | <u>Other Compt Approved</u> <u>(28)</u> | <u>Athletic / Activity</u> <u>(29)</u> |
|--|---|------------------------------------|---|--|--|---|
| Special And Extraordinary Items | | | | | | |
| 9920 | Special Items – Gains | | | | | |
| 9930 | Extraordinary Items – Gains | | | | | |
| 5520 | Special Items – Losses | | | | | |
| 5530 | Extraordinary Items – Losses | | | | | |
| Net Change In Fund Balances | | \$1,863,054 | | | | |
| Fund Balance | | | | | | |
| 0001 | Fund Balance - Beginning of Fiscal Year | 14,057,564 | | | | |
| Fund Balance - End Of Year | | \$15,920,618 | | | | |

| Amounts Expressed in Whole Dollars | | <u>Capital Reserve (690.</u> <u>1850)</u> <u>(31)</u> | <u>Capital Reserve (1431)</u> <u>(32)</u> | <u>Other Capital Projects</u> <u>Fund</u> <u>(39)</u> | <u>Debt Service</u> <u>(40)</u> | <u>Permanent</u> <u>(90)</u> |
|--|---|---|--|---|------------------------------------|---------------------------------|
| Special And Extraordinary Items | | | | | | |
| 9920 | Special Items – Gains | | | | | |
| 9930 | Extraordinary Items – Gains | | | | | |
| 5520 | Special Items – Losses | | | | | |
| 5530 | Extraordinary Items – Losses | | | | | |
| Net Change In Fund Balances | | | | \$973,329 | | |
| Fund Balance | | | | | | |
| 0001 | Fund Balance - Beginning of Fiscal Year | | | 1,819,100 | | |
| Fund Balance - End Of Year | | | | \$2,792,429 | | |

| Amounts Expressed in Whole Dollars | | <u>Total Governmental</u> <u>Funds</u> |
|--|---|---|
| Special And Extraordinary Items | | |
| 9920 | Special Items – Gains | |
| 9930 | Extraordinary Items – Gains | |
| 5520 | Special Items – Losses | |
| 5530 | Extraordinary Items – Losses | |
| Net Change In Fund Balances | | \$2,836,383 |
| Fund Balance | | |
| 0001 | Fund Balance - Beginning of Fiscal Year | 15,876,664 |
| Fund Balance - End Of Year | | \$18,713,047 |

LEA : 103027503 Plum Borough SD

Printed 11/27/2024 11:13:47 AM

| Amounts Expressed in Whole Dollars | | <u>Food Service</u> <u>(51)</u> | <u>Child Care</u> <u>Operations</u> <u>(52)</u> | <u>Other Enterprise</u> <u>(58)</u> | <u>TOTAL</u> | <u>Internal Service</u> <u>(60)</u> |
|--|--|------------------------------------|---|--|--------------------|--|
| Assets And Deferred Outflows Of Resources | | | | | | |
| Current Assets | | | | | | |
| 0100 | Cash and Cash Equivalents | 1,635,608 | | | 1,635,608 | |
| 0110 | Investments | | | | | |
| 0130 | Due From Other Funds | | | | | |
| 0141 | Due From Other Governments | | | | | |
| 0142 | State Revenue Receivable | | | | | |
| 0143 | Federal Revenue Receivable | | | | | |
| 0146 | Due from Primary Government | | | | | |
| 0147 | Due from Component Unit | | | | | |
| 0150 | Other Receivables | 53,717 | | | 53,717 | |
| 0170 | Inventories | 4,747 | | | 4,747 | |
| 0180 | Prepaid Expenses (Expenditures) | | | | | |
| 0190 | Other Current Assets | | | | | |
| Total Current Assets | | \$1,694,072 | | | \$1,694,072 | |
| Noncurrent Assets | | | | | | |
| 0211 | Land | | | | | |
| 0212 | Site Improvements (Net) | | | | | |
| 0220 | Buildings and Building Improvements (Net) | | | | | |
| 0230 | Tangible Property and Intangible Right-To-Use Assets (Net) | 101,356 | | | 101,356 | |
| 0250 | Construction in Progress | | | | | |
| 0260 | Long Term Prepayments | | | | | |
| 0290 | Other Noncurrent Assets | | | | | |
| Total Noncurrent Assets | | \$101,356 | | | \$101,356 | |
| 0910 | Deferred Outflows of Resources | 305,285 | | | 305,285 | |
| Total Assets And Deferred Outflows Of Resources | | \$2,100,713 | | | \$2,100,713 | |

LEA : 103027503 Plum Borough SD

Printed 11/27/2024 11:13:47 AM

| Amounts Expressed in Whole Dollars | <u>Food Service</u> <u>(51)</u> | <u>Child Care</u> <u>Operations</u> <u>(52)</u> | <u>Other Enterprise</u> <u>(58)</u> | <u>TOTAL</u> | <u>Internal Service</u> <u>(60)</u> |
|---|------------------------------------|---|--|--------------------|--|
| Liabilities And Deferred Inflows Of Resources And Net Position | | | | | |
| Current Liabilities | | | | | |
| 0400 Due to Other Funds | 145,192 | | | 145,192 | |
| 0411 Due to Other Governments | | | | | |
| 0413 Due to Component Unit | | | | | |
| 0420 Accounts Payable | 15,861 | | | 15,861 | |
| 0430 Contracts Payable | | | | | |
| 0440 Current Portion of Long-Term Debt | | | | | |
| 0450 Short-Term Payables | | | | | |
| 0461 Accrued Salaries and Benefits | | | | | |
| 0462 Payroll Deductions and Withholding | | | | | |
| 0480 Unearned Revenues | 44,486 | | | 44,486 | |
| 0490 Other Current Liabilities | | | | | |
| Total Current Liabilities | \$205,539 | | | \$205,539 | |
| Noncurrent Liabilities | | | | | |
| 0510 Bonds Payable | | | | | |
| 0520 Extended-Term Financing Agreements Payable | | | | | |
| 0530 Lease and Other Right-To-Use Obligations | | | | | |
| 0540 Accumulated Compensated Absences | 10,158 | | | 10,158 | |
| 0550 Authority Lease Obligations | | | | | |
| 0560 Other Post-Employment Benefits (OPEB) | 73,000 | | | 73,000 | |
| 0570 Net Pension Liability | 1,799,000 | | | 1,799,000 | |
| 0599 Other Noncurrent Liabilities | | | | | |
| Total Noncurrent Liabilities | \$1,882,158 | | | \$1,882,158 | |
| Total Liabilities | \$2,087,697 | | | \$2,087,697 | |
| 0950 Deferred Inflows of Resources | 92,000 | | | 92,000 | |
| Net Position | | | | | |
| 0791 Net Investment in Capital Assets | 101,356 | | | 101,356 | |
| 0008 Restricted Net Position (0792 – 0798) | | | | | |
| 0799 Unrestricted Net Position | (180,340) | | | (180,340) | |
| Total Net Position | (\$78,984) | | | (\$78,984) | |
| Total Liabilities And Deferred Inflows Of Resources And Net Position | \$2,100,713 | | | \$2,100,713 | |

| Amounts Expressed in Whole Dollars | | <u>Food Service</u> <u>(51)</u> | <u>Child Care Operations</u> <u>(52)</u> | <u>Other Enterprise</u> <u>(58)</u> | <u>TOTAL</u> | <u>Internal Service</u> <u>(60)</u> |
|---|--|------------------------------------|---|--|----------------------|--|
| Operating Revenues | | | | | | |
| 6600 | Food Service Revenue | 1,016,247 | | | 1,016,247 | |
| 0071 | Charges for Services | | | | | |
| 0072 | Other Operating Revenue | | | | | |
| Total Operating Revenues | | \$1,016,247 | | | \$1,016,247 | |
| Operating Expenses | | | | | | |
| 100 | Personnel Services – Salaries | 752,910 | | | 752,910 | |
| 200 | Personnel Services – Employee Benefits | 413,955 | | | 413,955 | |
| 300 | Purchased Professional and Technical Services | | | | | |
| 400 | Purchased Property Services | 69,021 | | | 69,021 | |
| 500 | Other Purchased Services | | | | | |
| 600 | Supplies | 1,271,121 | | | 1,271,121 | |
| 740 | Depreciation | 22,977 | | | 22,977 | |
| 770 | Amortization Expense | | | | | |
| 810 | Dues and Fees | | | | | |
| 880 | Refunds of Prior Years' Receipts | | | | | |
| 890 | Miscellaneous Expenditures | | | | | |
| Total Operating Expenses | | \$2,529,984 | | | \$2,529,984 | |
| Operating Income (Loss) | | (\$1,513,737) | | | (\$1,513,737) | |
| Non Operating Revenues (Expenses) | | | | | | |
| 6500 | Earnings on Investments | 79,461 | | | 79,461 | |
| 6830 | Federal Revenue from Intermediary Sources | | | | | |
| 6920 | Contributions and Donations from Private Sources | | | | | |
| 6930 | Gains or Losses on Sale of Fixed Assets | | | | | |
| 6991 | Refunds of a Prior Year Expenditure | | | | | |
| 7000 | Revenue from State Sources | 416,141 | | | 416,141 | |
| 8000 | Revenue from Federal Sources | 1,158,097 | | | 1,158,097 | |
| 9990 | Insurance Recoveries | | | | | |
| 820 | Claims and Judgments Against the LEA | | | | | |
| 830 | Interest | | | | | |
| TOTAL Non Operating Revenues (Expenses) | | \$1,653,699 | | | \$1,653,699 | |
| Income (Loss) Before Contributions And Transfers | | \$139,962 | | | \$139,962 | |

| Amounts Expressed in Whole Dollars | <u>Food Service</u> (51) | <u>Child Care Operations</u> (52) | <u>Other Enterprise</u> (58) | <u>TOTAL</u> | <u>Internal Service</u> (60) |
|---|-----------------------------|--------------------------------------|---------------------------------|--------------|---------------------------------|
| Contributions, Transfers, and Special and Extraordinary Items | | | | | |
| 5200 Interfund Transfers – Out | | | | | |
| 5300 Transfers Out to Component Units/Primary Governments | | | | | |
| 5520 Special Items – Losses | | | | | |
| 5530 Extraordinary Items – Losses | | | | | |
| 9300 Interfund Transfers - IN | | | | | |
| 9500 Capital Contributions | | | | | |
| 9700 Transfers IN From Component Units/Primary Governments | | | | | |
| 9920 Special Items – Gains | | | | | |
| 9930 Extraordinary Items – Gains | | | | | |
| Change In Net Position | \$139,962 | | | \$139,962 | |
| 0002 Net Position - Beginning of Fiscal Year | (218,946) | | | (218,946) | |
| 0003 Accounting Changes / Residual Equity Transfers | | | | | |
| Net Position - End Of Year | (\$78,984) | | | (\$78,984) | |

LEA : 103027503 Plum Borough SD

Printed 11/27/2024 11:13:57 AM

| Amounts Expressed in Whole Dollars | | <u>Food Service</u> <u>(51)</u> | <u>Child Care Operations</u> <u>(52)</u> | <u>Other Enterprise</u> <u>(58)</u> | <u>TOTAL</u> | <u>Internal Service(60)</u> |
|---|---|------------------------------------|---|--|----------------------|-----------------------------|
| Cash Flows From Operating Activities | | | | | | |
| 0011 | Cash Receipts From Users | 974,704 | | | 974,704 | |
| 0012 | Cash Receipts From Assessments Made to Other Funds | | | | | |
| 0013 | Cash Receipts From Earnings on Investments | | | | | |
| 0014 | Cash Receipts From Other Operating Revenue | | | | | |
| 0015 | Cash Payments To Employees For Services | 1,254,800 | | | 1,254,800 | |
| 0016 | Cash Payments For Insurance Claims | | | | | |
| 0017 | Cash Payments To Suppliers For Goods and Services | 1,099,100 | | | 1,099,100 | |
| 0018 | Cash Payments For Other Operating Expenses | | | | | |
| Net Cash Provided By (Used For) Operating Activities | | (\$1,379,196) | | | (\$1,379,196) | |
| Cash Flows From Non-Capital Financing Activities | | | | | | |
| 0021 | Receipts From Local Sources - 6000 | | | | | |
| 0022 | Receipts From State Sources - 7000 | 416,141 | | | 416,141 | |
| 0023 | Receipts From Federal Sources -8000 | 973,408 | | | 973,408 | |
| 0024 | Notes and Loans Received (Repaid) | | | | | |
| 0025 | Interest Paid on Notes/Loans - 5100-830 | | | | | |
| 0026 | Operating Transfers In (Out)/Residual Equity Trans | | | | | |
| 0027 | Operating Transfers In (Out) Primary Government / Comp Unit | | | | | |
| 0028 | Receipts From Refund of Prior Year Expenditures - 6991 | | | | | |
| 0029 | Special and Extraordinary Gains (losses) | | | | | |
| 0030 | Receipts from Insurance Recoveries -9990 | | | | | |
| Net Cash Prov By (Used for) Non-Capital Financing Activities | | \$1,389,549 | | | \$1,389,549 | |
| Cash Flows From Capital and Related Financing Activities | | | | | | |
| 0031 | Payments For Fac Acq, Const, and Imp - 4000 | | | | | |
| 0032 | Proceeds from Disposal of Capital Assets | (40,802) | | | (40,802) | |
| 0033 | Proceeds From Extended Term Financing - 9200 | | | | | |
| 0034 | Principal Paid on Financing Agreements | | | | | |
| 0035 | Interest Paid on Financing Agreements - 5100-830 | | | | | |
| 0036 | (Inc) Dec in Contributed Capital | | | | | |
| Net Cash Prov By (Used for) Capital and Related Financing Activities | | (\$40,802) | | | (\$40,802) | |
| Cash Flows From Investing Activities | | | | | | |
| 0041 | Earnings on Investments - 6500 | 79,461 | | | 79,461 | |
| 0042 | Purchase of Inv Securities / Deposits to Inv Pools | | | | | |
| 0043 | Receipts From Investment Pool Withdrawals | | | | | |
| 0044 | Proceeds from Sale and Maturity of Inv Securities | | | | | |

LEA : 103027503 Plum Borough SD

Printed 11/27/2024 11:13:57 AM

0045 Loans Received (Paid)

| | | |
|--|----------|----------|
| Net Cash Prov By (Used for) Investing Activities | \$79,461 | \$79,461 |
|--|----------|----------|

LEA : 103027503 Plum Borough SD

Printed 11/27/2024 11:13:57 AM

| | <u>Food Service</u> <u>(51)</u> | <u>Child Care Operations</u> <u>(52)</u> | <u>Other Enterprise</u> <u>(58)</u> | <u>TOTAL</u> | <u>Internal Service</u> <u>(60)</u> |
|--|------------------------------------|---|--|----------------------|--|
| Net Increase (Decrease) in Cash Flows | 49,012 | | | 49,012 | |
| 0004 Cash and Cash Equivalents Beginning of Year | 1,427,409 | | | 1,427,409 | |
| Cash and Cash Equivalents at Year End | \$1,476,421 | | | \$1,476,421 | |
| | | | | | |
| Reconciliation of Operating Income (Loss) To Net Cash Provided by (Used For) Operating Activities | | | | | |
| 0005 Operating Income (Loss) per REP | (1,513,737) | | | (1,513,737) | |
| Adjustments | | | | | |
| 0051 Depreciation and Net Amortization | 22,977 | | | 22,977 | |
| 0052 Provision for Uncollectible Accounts | | | | | |
| 0053 Other Adjustments | 189,530 | | | 189,530 | |
| Effect of Changes in Assets, Liabilities, Deferred Outflows and Deferred Inflows | | | | | |
| 0054 (Inc) Dec In Accounts Receivable (0120-0150) | (41,543) | | | (41,543) | |
| 0055 Advances to Other Funds | | | | | |
| 0056 (Inc) Dec in Inventories (0170) | 5,367 | | | 5,367 | |
| 0057 (Inc) Dec in Prepaid Expenses (0180) | | | | | |
| 0058 (Inc) Dec in Other Current or Noncurrent Assets | | | | | |
| 0064 Deferred Outflows (0910) | (34,365) | | | (34,365) | |
| 0059 Inc (Dec) in Accounts Payable (0400-0450) | 16,524 | | | 16,524 | |
| 0060 Inc (Dec) in Accrued Salaries/Benefits (0461) | | | | | |
| 0065 Inc (Dec) in Net Pension Liabilities (0570) | (61,000) | | | (61,000) | |
| 0066 Inc (Dec) in Other Postemp Benefit Oblig (0560) | (4,435) | | | (4,435) | |
| 0061 Inc (Dec) in Payroll Deductions/Withholding (0462) | | | | | |
| 0062 Inc (Dec) in Unearned Revenue (0480) | 44,486 | | | 44,486 | |
| 0063 Inc (Dec) in Other Current or Noncurrent Liabilities | | | | | |
| 0067 Deferred Inflows (0950) | (3,000) | | | (3,000) | |
| Total Adjustments | \$134,541 | | | \$134,541 | |
| Cash Provided By (Used for) Total | (\$1,379,196) | | | (\$1,379,196) | |

COMBINED STATEMENT OF CASH FLOWS
SCHEDULE OF NONCASH INVESTING, CAPITAL, AND FINANCING ACTIVITIES

| Explanation of Transaction and Balance Sheet Effect | Amount |
|---|-----------|
| USDA Donated Commodities | 189,530 |
| Total | \$189,530 |

LEA : 103027503 Plum Borough SD

Printed 11/27/2024 11:13:59 AM

| Amounts Expressed in Whole Dollars | | <u>Private Purpose Trust</u> <u>(71)</u> | <u>Investment Trust</u> <u>(72)</u> | <u>Pension Trust</u> <u>(73)</u> | <u>Student Activity Custodial</u> <u>(81)</u> |
|---|--|---|--|-------------------------------------|--|
| Assets And Deferred Outflows Of Resources | | | | | |
| Assets | | | | | |
| 0100 | Cash and Cash Equivalents | 156,880 | | | |
| 0110 | Investments | | | | |
| 0130 | Due From Other Funds | | | | |
| 0140 | Due from Other Governments, Primary Government and Component Units | 800 | | | |
| 0150 | Other Receivables | | | | |
| 0170 | Inventories | | | | |
| 0180 | Prepaid Expenses (Expenditures) | | | | |
| 0190 | Other Current Assets | | | | |
| 0220 | Buildings and Building Improvements (Net) | | | | |
| 0230 | Tangible Property and Intangible Right-To-Use Assets (Net) | | | | |
| Total Assets | | \$157,680 | | | |
| 0910 | Deferred Outflows of Resources | | | | |
| Total Assets And Deferred Outflows Of Resources | | \$157,680 | | | |

LEA : 103027503 Plum Borough SD

Printed 11/27/2024 11:13:59 AM

| Amounts Expressed in Whole Dollars | | <u>Other Custodial</u> <u>(89)</u> | <u>Fiduciary Component Units</u> <u>(98)</u> | <u>Total Fiduciary Funds</u> |
|--|--|---------------------------------------|---|------------------------------|
| Assets And Deferred Outflows Of Resources | | | | |
| Assets | | | | |
| 0100 | Cash and Cash Equivalents | | | 156,880 |
| 0110 | Investments | | | |
| 0130 | Due From Other Funds | | | |
| 0140 | Due from Other Governments, Primary Government and Component Units | | | 800 |
| 0150 | Other Receivables | | | |
| 0170 | Inventories | | | |
| 0180 | Prepaid Expenses (Expenditures) | | | |
| 0190 | Other Current Assets | | | |
| 0220 | Buildings and Building Improvements (Net) | | | |
| 0230 | Tangible Property and Intangible Right-To-Use Assets (Net) | | | |
| Total Assets | | | | \$157,680 |
| 0910 | Deferred Outflows of Resources | | | |
| Total Assets And Deferred Outflows Of Resources | | | | \$157,680 |

LEA : 103027503 Plum Borough SD

Printed 11/27/2024 11:13:59 AM

| Amounts Expressed in Whole Dollars | | <u>Private Purpose Trust</u> <u>(71)</u> | <u>Investment Trust</u> <u>(72)</u> | <u>Pension Trust</u> <u>(73)</u> | <u>Student Activity Custodial</u> <u>(81)</u> |
|--|--|---|--|-------------------------------------|--|
| Liabilities, Deferred Inflows Of Resources And Net Position | | | | | |
| Liabilities | | | | | |
| 0400 | Due to Other Funds | | | | |
| 0410 | Due to Other Governments, Primary Government and Component Units | | | | |
| 0420 | Accounts Payable | | | | |
| 0430 | Contracts Payable | | | | |
| 0450 | Short-Term Payables | | | | |
| 0460 | Payroll Accruals and Withholdings | | | | |
| 0480 | Unearned Revenues | | | | |
| 0490 | Other Current Liabilities | | | | |
| Total Liabilities | | | | | |
| 0950 | Deferred Inflows of Resources | | | | |
| Net Position | | | | | |
| 0791 | Net Investment in Capital Assets | | | | |
| 0009 | Restricted Net Position (0792 – 0798) | | 157,680 | | |
| 0799 | Unrestricted Net Position | | | | |
| Total Net Position | | | \$157,680 | | |
| Total Liabilities, Deferred Inflows Of Resources And Net Position | | | \$157,680 | | |

LEA : 103027503 Plum Borough SD

Printed 11/27/2024 11:13:59 AM

| Amounts Expressed in Whole Dollars | | <u>Other Custodial</u> <u>(89)</u> | <u>Fiduciary Component Units</u> <u>(98)</u> | <u>Total Fiduciary Funds</u> |
|--|--|---------------------------------------|---|------------------------------|
| Liabilities, Deferred Inflows Of Resources And Net Position | | | | |
| Liabilities | | | | |
| 0400 | Due to Other Funds | | | |
| 0410 | Due to Other Governments, Primary Government and Component Units | | | |
| 0420 | Accounts Payable | | | |
| 0430 | Contracts Payable | | | |
| 0450 | Short-Term Payables | | | |
| 0460 | Payroll Accruals and Withholdings | | | |
| 0480 | Unearned Revenues | | | |
| 0490 | Other Current Liabilities | | | |
| Total Liabilities | | | | |
| 0950 | Deferred Inflows of Resources | | | |
| Net Position | | | | |
| 0791 | Net Investment in Capital Assets | | | |
| 0009 | Restricted Net Position (0792 – 0798) | | | 157,680 |
| 0799 | Unrestricted Net Position | | | |
| Total Net Position | | | | \$157,680 |
| Total Liabilities, Deferred Inflows Of Resources And Net Position | | | | \$157,680 |

LEA : 103027503 Plum Borough SD

Printed 11/27/2024 11:14:00 AM

| Amounts Expressed in Whole Dollars | <u>Private Purpose Trust</u> (71) | <u>Investment Trust</u> (72) | <u>Pension Trust</u> (73) | <u>Student Activity</u> <u>Custodial</u> (81) | <u>Other Custodial</u> (89) | <u>Fiduciary Component</u> <u>Units</u> (98) |
|--|--------------------------------------|---------------------------------|------------------------------|---|--------------------------------|--|
| Additions | | | | | | |
| 0091 Gifts and Contributions | | | | | | |
| 0095 Net Investment Earnings | | | | | | |
| 0092 Other Additions | 403,645 | | | | | |
| Deductions | | | | | | |
| 0093 Scholarships Awarded | | | | | | |
| 0094 Other Deductions | 392,016 | | | | | |
| Change In Net Position | \$11,629 | | | | | |
| 0006 Net Position – Beginning of Fiscal Year | 146,051 | | | | | |
| 0007 Net Position Held in Trust for Pension Benefits | | | | | | |
| Net Position - End of Fiscal Year | \$157,680 | | | | | |

LEA : 103027503 Plum Borough SD

Printed 11/27/2024 11:14:00 AM

| Amounts Expressed in Whole Dollars | | <u>Total Fiduciary</u> <u>Funds</u> |
|--|---|--|
| Additions | | |
| 0091 | Gifts and Contributions | |
| 0095 | Net Investment Earnings | |
| 0092 | Other Additions | 403,645 |
| Deductions | | |
| 0093 | Scholarships Awarded | |
| 0094 | Other Deductions | 392,016 |
| Change In Net Position | | \$11,629 |
| 0006 | Net Position – Beginning of Fiscal Year | 146,051 |
| 0007 | Net Position Held in Trust for Pension Benefits | |
| Net Position - End of Fiscal Year | | \$157,680 |

| | Revenue Reported In Current Year | Current Year Tax Accrual | Prior Year Tax Accrual | Taxes Collected In Current Year |
|--|-------------------------------------|-----------------------------|---------------------------|------------------------------------|
| Revenue from Local Sources | | | | |
| 6111 Current Real Estate Taxes | 32,251,442.38 | | | 32,251,442.38 |
| 6112 Interim Real Estate Taxes | 237,518.85 | | | 237,518.85 |
| 6113 Public Utility Realty Taxes | 34,903.88 | | | 34,903.88 |
| 6120 Current Per Capita Taxes, Section 679 | 93,068.69 | | | 93,068.69 |
| 6141 Current Act 511 Per Capita Taxes | 93,068.71 | | | 93,068.71 |
| 6143 Current Act 511 Local Services Taxes | 32,938.43 | | | 32,938.43 |
| 6151 Current Act 511 Earned Income Taxes | 4,712,912.93 | | | 4,712,912.93 |
| 6153 Current Act 511 Real Estate Transfer Taxes | 460,674.32 | | | 460,674.32 |
| 6411 Delinquent Real Estate Taxes | 913,172.45 | | | 913,172.45 |
| 6451 Delinquent Act 511 Earned Income Taxes | 146,810.20 | | | 146,810.20 |
| 6500 Earnings on Investments | 1,496,488.48 | | | |
| 6700 Revenues from LEA Activities | 107,744.00 | | | |
| 6832 Federal IDEA Revenue Received as Pass Through | 695,243.55 | | | |
| 6834 Federal ARP Act IDEA Preschool Revenue Received as Pass Through | 3,906.00 | | | |
| 6910 Rentals | 127,103.43 | | | |
| 6920 Contributions and Donations from Private Sources | 125,045.61 | | | |
| 6992 Energy Efficiency Revenues and Incentives | 2,096.18 | | | |
| 6999 Other Revenues Not Specified Above | 2,101.48 | | | |
| TOTAL Revenue from Local Sources | \$41,536,239.57 | | | \$38,976,510.84 |

| | Revenue Reported In Current Year | | | |
|--|-------------------------------------|--|--|--|
| <u>Revenue from State Sources</u> | | | | |
| 7111 Basic Education Funding-Formula | 14,391,477.85 | | | |
| 7160 Tuition for Orphans Subsidy | 521.81 | | | |
| 7271 Special Education funds for School-Aged Pupils | 3,000,640.16 | | | |
| 7311 Pupil Transportation Subsidy | 1,406,934.55 | | | |
| 7312 Nonpublic and Charter School Pupil Transportation Subsidy | 84,315.00 | | | |
| 7320 Rental and Sinking Fund Payments / Building Reimbursement Subsidy | 729,907.67 | | | |
| 7330 Health Services (Medical, Dental, Nurse, Act 25) | 63,168.09 | | | |
| 7340 State Property Tax Reduction Allocation | 2,086,638.56 | | | |
| 7362 School Mental Health & Safety and Security Grants | 249,382.35 | | | |
| 7505 Ready to Learn Block Grant | 618,345.00 | | | |
| 7599 Other State Revenue Not Listed Elsewhere in the 7000 Series | 492.60 | | | |
| 7810 State Share of Social Security and Medicare Taxes | 910,843.16 | | | |
| 7820 State Share of Retirement Contributions | 6,179,140.28 | | | |
| TOTAL Revenue from State Sources | \$29,721,807.08 | | | |

| | Revenue Reported In Current Year | | | |
|--|-------------------------------------|--|--|--|
| <u>Revenue from Federal Sources</u> | | | | |
| 8390 Other Restricted Federal Grants-in-Aid Directly from the Federal Government | 71,780.68 | | | |
| 8514 Title I - Improving the Academic Achievement of the Disadvantaged | 388,588.16 | | | |
| 8515 Title II - Preparing, Training, and Recruiting High Quality Teachers and Principals | 74,091.37 | | | |
| 8516 Title III - Language Instruction for English Learners and Immigrant Students | 360.00 | | | |
| 8517 Title IV - 21st Century Schools | 5,345.96 | | | |
| 8744 ARP ESSER - Elementary and Secondary School Emergency Relief Fund | 1,317,937.19 | | | |
| 8751 ARP ESSER Learning Loss | 55,926.26 | | | |
| 8753 ARP ESSER Afterschool Programs | 19,710.59 | | | |
| 8754 ARP ESSER Homeless Children and Youth Funds | 6,816.87 | | | |
| 8810 School-Based Access Medicaid Reimbursement Program (SBAP) Reimbursements (Access) | 251,490.22 | | | |
| 8820 Medical Assistance Reimbursement for Administrative Claiming (Quarterly) Program | 5,372.59 | | | |
| TOTAL Revenue from Federal Sources | \$2,197,419.89 | | | |

| | | | | Revenue Reported In Current Year | | |
|--------------------------------|--|--|--|-------------------------------------|--|-----------------|
| <u>Other Financing Sources</u> | | | | | | |
| 9400 | Sale of or Compensation for Loss of Fixed Assets | | | 22,329.04 | | |
| 9990 | Insurance Recoveries | | | 43,093.38 | | |
| TOTAL Other Financing Sources | | | | \$65,422.42 | | |
| TOTAL FROM ALL SOURCES | | | | \$73,520,888.96 | | \$38,976,510.84 |

LEA : 103027503 Plum Borough SD

Printed 11/27/2024 11:14:05 AM

| | <u>General Fund (10)</u> | <u>Student Sponsored Activity Fund (21)</u> | <u>Public Purpose Trust (27)</u> | <u>Other Compt Approved (28)</u> | <u>Athletic / Activity (29)</u> | <u>Capital Reserve (690, 1850) (31)</u> |
|--|--------------------------|---|--------------------------------------|--------------------------------------|-------------------------------------|---|
| 6000 Revenue from Local Sources | | | | | | |
| 6111 Current Real Estate Taxes | 32,251,442.38 | | | | | |
| 6112 Interim Real Estate Taxes | 237,518.85 | | | | | |
| 6113 Public Utility Realty Taxes | 34,903.88 | | | | | |
| 6120 Current Per Capita Taxes, Section 679 | 93,068.69 | | | | | |
| 6141 Current Act 511 Per Capita Taxes | 93,068.71 | | | | | |
| 6143 Current Act 511 Local Services Taxes | 32,938.43 | | | | | |
| 6151 Current Act 511 Earned Income Taxes | 4,712,912.93 | | | | | |
| 6153 Current Act 511 Real Estate Transfer Taxes | 460,674.32 | | | | | |
| 6411 Delinquent Real Estate Taxes | 913,172.45 | | | | | |
| 6451 Delinquent Act 511 Earned Income Taxes | 146,810.20 | | | | | |
| 6500 Earnings on Investments | 1,496,488.48 | | | | | |
| 6700 Revenues from LEA Activities | 107,744.00 | | | | | |
| 6832 Federal IDEA Revenue Received as Pass Through | 695,243.55 | | | | | |
| 6834 Federal ARP Act IDEA Preschool Revenue Received as Pass Through | 3,906.00 | | | | | |
| 6910 Rentals | 127,103.43 | | | | | |
| 6920 Contributions and Donations from Private Sources | 125,045.61 | | | | | |
| 6992 Energy Efficiency Revenues and Incentives | 2,096.18 | | | | | |
| 6999 Other Revenues Not Specified Above | 2,101.48 | | | | | |
| 6000 Total Revenue from Local Sources | \$41,536,239.57 | | | | | |
| 7000 Revenue from State Sources | | | | | | |
| 7111 Basic Education Funding-Formula | 14,391,477.85 | | | | | |
| 7160 Tuition for Orphans Subsidy | 521.81 | | | | | |
| 7271 Special Education funds for School-Aged Pupils | 3,000,640.16 | | | | | |
| 7311 Pupil Transportation Subsidy | 1,406,934.55 | | | | | |
| 7312 Nonpublic and Charter School Pupil Transportation Subsidy | 84,315.00 | | | | | |
| 7320 Rental and Sinking Fund Payments / Building Reimbursement Subsidy | 729,907.67 | | | | | |
| 7330 Health Services (Medical, Dental, Nurse, Act 25) | 63,168.09 | | | | | |
| 7340 State Property Tax Reduction Allocation | 2,086,638.56 | | | | | |
| 7362 School Mental Health & Safety and Security Grants | 249,382.35 | | | | | |
| 7505 Ready to Learn Block Grant | 618,345.00 | | | | | |
| 7599 Other State Revenue Not Listed Elsewhere in the 7000 Series | 492.60 | | | | | |
| 7810 State Share of Social Security and Medicare Taxes | 910,843.16 | | | | | |
| 7820 State Share of Retirement Contributions | 6,179,140.28 | | | | | |
| 7000 Total Revenue from State Sources | \$29,721,807.08 | | | | | |

LEA : 103027503 Plum Borough SD

Printed 11/27/2024 11:14:05 AM

| | <u>Capital Reserve</u> <u>(1431) (32)</u> | <u>Other Capital</u> <u>Projects Fund (39)</u> | <u>Debt Service (40)</u> | <u>Permanent (90)</u> | <u>Total</u> |
|--|--|---|--------------------------|-----------------------|------------------------|
| 6000 Revenue from Local Sources | | | | | |
| 6111 Current Real Estate Taxes | | | | | 32,251,442.38 |
| 6112 Interim Real Estate Taxes | | | | | 237,518.85 |
| 6113 Public Utility Realty Taxes | | | | | 34,903.88 |
| 6120 Current Per Capita Taxes, Section 679 | | | | | 93,068.69 |
| 6141 Current Act 511 Per Capita Taxes | | | | | 93,068.71 |
| 6143 Current Act 511 Local Services Taxes | | | | | 32,938.43 |
| 6151 Current Act 511 Earned Income Taxes | | | | | 4,712,912.93 |
| 6153 Current Act 511 Real Estate Transfer Taxes | | | | | 460,674.32 |
| 6411 Delinquent Real Estate Taxes | | | | | 913,172.45 |
| 6451 Delinquent Act 511 Earned Income Taxes | | | | | 146,810.20 |
| 6500 Earnings on Investments | | | | | 1,496,488.48 |
| 6700 Revenues from LEA Activities | | | | | 107,744.00 |
| 6832 Federal IDEA Revenue Received as Pass Through | | | | | 695,243.55 |
| 6834 Federal ARP Act IDEA Preschool Revenue Received as Pass Through | | | | | 3,906.00 |
| 6910 Rentals | | | | | 127,103.43 |
| 6920 Contributions and Donations from Private Sources | | | | | 125,045.61 |
| 6992 Energy Efficiency Revenues and Incentives | | | | | 2,096.18 |
| 6999 Other Revenues Not Specified Above | | | | | 2,101.48 |
| 6000 Total Revenue from Local Sources | | | | | \$41,536,239.57 |
| 7000 Revenue from State Sources | | | | | |
| 7111 Basic Education Funding-Formula | | | | | 14,391,477.85 |
| 7160 Tuition for Orphans Subsidy | | | | | 521.81 |
| 7271 Special Education funds for School-Aged Pupils | | | | | 3,000,640.16 |
| 7311 Pupil Transportation Subsidy | | | | | 1,406,934.55 |
| 7312 Nonpublic and Charter School Pupil Transportation Subsidy | | | | | 84,315.00 |
| 7320 Rental and Sinking Fund Payments / Building Reimbursement Subsidy | | | | | 729,907.67 |
| 7330 Health Services (Medical, Dental, Nurse, Act 25) | | | | | 63,168.09 |
| 7340 State Property Tax Reduction Allocation | | | | | 2,086,638.56 |
| 7362 School Mental Health & Safety and Security Grants | | | | | 249,382.35 |
| 7505 Ready to Learn Block Grant | | | | | 618,345.00 |
| 7599 Other State Revenue Not Listed Elsewhere in the 7000 Series | | | | | 492.60 |
| 7810 State Share of Social Security and Medicare Taxes | | | | | 910,843.16 |
| 7820 State Share of Retirement Contributions | | | | | 6,179,140.28 |
| 7000 Total Revenue from State Sources | | | | | \$29,721,807.08 |

LEA : 103027503 Plum Borough SD

Printed 11/27/2024 11:14:05 AM

| | <u>General Fund (10)</u> | <u>Student Sponsored Activity Fund (21)</u> | <u>Public Purpose Trust (27)</u> | <u>Other Compt Approved (28)</u> | <u>Athletic / Activity (29)</u> | <u>Capital Reserve (690, 1850) (31)</u> |
|--|--------------------------|---|--------------------------------------|--------------------------------------|-------------------------------------|---|
| 8000 Revenue from Federal Sources | | | | | | |
| 8390 Other Restricted Federal Grants-in-Aid Directly from the Federal Government | 71,780.68 | | | | | |
| 8514 Title I - Improving the Academic Achievement of the Disadvantaged | 388,588.16 | | | | | |
| 8515 Title II - Preparing, Training, and Recruiting High Quality Teachers and Principals | 74,091.37 | | | | | |
| 8516 Title III - Language Instruction for English Learners and Immigrant Students | 360.00 | | | | | |
| 8517 Title IV - 21st Century Schools | 5,345.96 | | | | | |
| 8744 ARP ESSER - Elementary and Secondary School Emergency Relief Fund | 1,317,937.19 | | | | | |
| 8751 ARP ESSER Learning Loss | 55,926.26 | | | | | |
| 8753 ARP ESSER Afterschool Programs | 19,710.59 | | | | | |
| 8754 ARP ESSER Homeless Children and Youth Funds | 6,816.87 | | | | | |
| 8810 School-Based Access Medicaid Reimbursement Program (SBAP) Reimbursements (Access) | 251,490.22 | | | | | |
| 8820 Medical Assistance Reimbursement for Administrative Claiming (Quarterly) Program | 5,372.59 | | | | | |
| 8000 Total Revenue from Federal Sources | \$2,197,419.89 | | | | | |
| 9000 Other Financing Sources | | | | | | |
| 9310 General Fund Transfers | | | | | | |
| 9400 Sale of or Compensation for Loss of Fixed Assets | 22,329.04 | | | | | |
| 9990 Insurance Recoveries | 43,093.38 | | | | | |
| 9000 Total Other Financing Sources | \$65,422.42 | | | | | |
| Total From All Sources | \$73,520,888.96 | | | | | |

LEA : 103027503 Plum Borough SD

Printed 11/27/2024 11:14:05 AM

| | <u>Capital Reserve</u> <u>(1431) (32)</u> | <u>Other Capital</u> <u>Projects Fund (39)</u> | <u>Debt Service (40)</u> | <u>Permanent (90)</u> | <u>Total</u> |
|--|--|---|--------------------------|-----------------------|------------------------|
| 8000 Revenue from Federal Sources | | | | | |
| 8390 Other Restricted Federal Grants-in-Aid Directly from the Federal Government | | | | | 71,780.68 |
| 8514 Title I - Improving the Academic Achievement of the Disadvantaged | | | | | 388,588.16 |
| 8515 Title II - Preparing, Training, and Recruiting High Quality Teachers and Principals | | | | | 74,091.37 |
| 8516 Title III - Language Instruction for English Learners and Immigrant Students | | | | | 360.00 |
| 8517 Title IV - 21st Century Schools | | | | | 5,345.96 |
| 8744 ARP ESSER - Elementary and Secondary School Emergency Relief Fund | | | | | 1,317,937.19 |
| 8751 ARP ESSER Learning Loss | | | | | 55,926.26 |
| 8753 ARP ESSER Afterschool Programs | | | | | 19,710.59 |
| 8754 ARP ESSER Homeless Children and Youth Funds | | | | | 6,816.87 |
| 8810 School-Based Access Medicaid Reimbursement Program (SBAP) Reimbursements (Access) | | | | | 251,490.22 |
| 8820 Medical Assistance Reimbursement for Administrative Claiming (Quarterly) Program | | | | | 5,372.59 |
| 8000 Total Revenue from Federal Sources | | | | | \$2,197,419.89 |
| 9000 Other Financing Sources | | | | | |
| 9310 General Fund Transfers | | 2,400,000.00 | | | 2,400,000.00 |
| 9400 Sale of or Compensation for Loss of Fixed Assets | | | | | 22,329.04 |
| 9990 Insurance Recoveries | | | | | 43,093.38 |
| 9000 Total Other Financing Sources | | \$2,400,000.00 | | | \$2,465,422.42 |
| Total From All Sources | | \$2,400,000.00 | | | \$75,920,888.96 |

LEA : 103027503 Plum Borough SD

Printed 11/27/2024 11:14:07 AM

| | <u>General Fund (10)</u> | <u>Student Sponsored Activity Fund (21)</u> | <u>Public Purpose Trust (27)</u> | <u>Other Compt Approved (28)</u> | <u>Athletic / Activity (29)</u> | <u>Capital Reserve (690. 1850) (31)</u> |
|------------------------------|--------------------------|---|--------------------------------------|--------------------------------------|---------------------------------|---|
| Revenue from Local Sources | 41,536,239.57 | | | | | |
| Revenue from State Sources | 29,721,807.08 | | | | | |
| Revenue from Federal Sources | 2,197,419.89 | | | | | |
| Other Financing Sources | 65,422.42 | | | | | |
| Total From All Sources | \$73,520,888.96 | | | | | |

LEA : 103027503 Plum Borough SD

Printed 11/27/2024 11:14:07 AM

| | <u>Capital Reserve (1431)</u> <u>(32)</u> | <u>Other Capital Projects</u> <u>Fund (39)</u> | <u>Debt Service (40)</u> | <u>Permanent (90)</u> | <u>Total</u> |
|------------------------------|--|---|--------------------------|-----------------------|-----------------|
| Revenue from Local Sources | | | | | 41,536,239.57 |
| Revenue from State Sources | | | | | 29,721,807.08 |
| Revenue from Federal Sources | | | | | 2,197,419.89 |
| Other Financing Sources | | 2,400,000.00 | | | 2,465,422.42 |
| Total From All Sources | | \$2,400,000.00 | | | \$75,920,888.96 |

LEA : 103027503 Plum Borough SD

Printed 11/27/2024 11:14:11 AM

General Fund (10)

| 1000 Instruction | Total |
|--|------------------------|
| 100 <u>Personnel Services – Salaries</u> | |
| 100 Personnel Services – Salaries | 20,271,510.93 |
| Total Personnel Services – Salaries | \$20,271,510.93 |
| 200 <u>Personnel Services – Employee Benefits</u> | |
| 210 Group Insurance – Contracted Provider | 3,522,215.94 |
| 220 Social Security Contributions | 1,491,733.25 |
| 230 PSERS Retirement Contributions | 6,786,310.78 |
| 260 Workers' Compensation | 78,778.36 |
| 280 Other Post-Employment Benefits (OPEB) | 317,246.23 |
| 291 Other Retirement Plans | 60,000.00 |
| Total Personnel Services – Employee Benefits | \$12,256,284.56 |
| 300 <u>Purchased Professional and Technical Services</u> | |
| 322 Professional Educational Services – Ius | 497,147.86 |
| 329 Professional Educational Services – Other | 715,498.23 |
| 330 Other Professional Services | 363,340.99 |
| Total Purchased Professional and Technical Services | \$1,575,987.08 |
| 400 <u>Purchased Property Services</u> | |
| 430 Repairs and Maintenance Services | 7,250.36 |
| 440 Rentals | 157,708.46 |
| Total Purchased Property Services | \$164,958.82 |
| 500 <u>Other Purchased Services</u> | |
| 561 Tuition To Other School Districts Within the State | 195,736.55 |
| 562 Tuition To Pennsylvania Charter Schools | 1,266,848.32 |
| 564 Tuition To Career and Technology Centers | 799,332.03 |
| 567 Tuition To Approved Private Schools (APS) and PA Chartered Schools for the Deaf and Blind | 1,003,071.54 |
| 568 Tuition To Private Residential Rehabilitative Institutions (PRRI) [In-State] and Detention Centers | 29,528.77 |
| 569 Tuition – Other | 298,117.66 |
| 580 Travel | 6,778.36 |
| Total Other Purchased Services | \$3,599,413.23 |
| 600 <u>Supplies</u> | |
| 610 General Supplies | 388,440.19 |
| 630 Food | 401.72 |
| 640 Books and Periodicals | 144,412.21 |
| 650 Supplies & Fees – Technology Related | 319,467.59 |
| Total Supplies | \$852,721.71 |
| 700 <u>Property</u> | |
| 756 Capitalized Technology Equipment – Original | 346,183.66 |
| 762 Capitalized Equipment - Replacement | 8,101.00 |
| Total Property | \$354,284.66 |
| 800 <u>Other Objects</u> | |
| 810 Dues and Fees | 1,886.00 |

LEA : 103027503 Plum Borough SD

Printed 11/27/2024 11:14:11 AM

General Fund (10)

1000 Instruction

Total

| | |
|------------------------|-----------------|
| Total Other Objects | \$1,886.00 |
| Total 1000 Instruction | \$39,077,046.99 |

LEA : 103027503 Plum Borough SD

Printed 11/27/2024 11:14:11 AM

General Fund (10)

| 1100 Regular Programs – Elementary / Secondary | Elementary | Secondary | Federal | Total |
|---|------------------------|------------------------|-----------------------|------------------------|
| 100 Personnel Services – Salaries | | | | |
| 100 Personnel Services – Salaries | 7,741,509.00 | 8,822,280.29 | 757,397.01 | 17,321,186.30 |
| Total Personnel Services – Salaries | \$7,741,509.00 | \$8,822,280.29 | \$757,397.01 | \$17,321,186.30 |
| 200 Personnel Services – Employee Benefits | | | | |
| 210 Group Insurance – Contracted Provider | 1,333,577.36 | 1,603,274.92 | 127,115.68 | 3,063,967.96 |
| 220 Social Security Contributions | 571,774.39 | 637,483.61 | 63,625.82 | 1,272,883.82 |
| 230 PSERS Retirement Contributions | 2,734,330.54 | 2,932,001.34 | 130,942.74 | 5,797,274.62 |
| 260 Workers' Compensation | 30,904.61 | 32,605.70 | 3,326.84 | 66,837.15 |
| 280 Other Post-Employment Benefits (OPEB) | 147,510.89 | 147,510.88 | | 295,021.77 |
| 291 Other Retirement Plans | 30,000.00 | 30,000.00 | | 60,000.00 |
| Total Personnel Services – Employee Benefits | \$4,848,097.79 | \$5,382,876.45 | \$325,011.08 | \$10,555,985.32 |
| 300 Purchased Professional and Technical Services | | | | |
| 322 Professional Educational Services – Ius | 9,295.86 | 51,640.70 | | 60,936.56 |
| 329 Professional Educational Services – Other | 345,106.59 | 345,106.59 | | 690,213.18 |
| 330 Other Professional Services | 711.00 | | | 711.00 |
| Total Purchased Professional and Technical Services | \$355,113.45 | \$396,747.29 | | \$751,860.74 |
| 400 Purchased Property Services | | | | |
| 430 Repairs and Maintenance Services | 395.00 | 6,295.36 | | 6,690.36 |
| 440 Rentals | 78,854.23 | 78,854.23 | | 157,708.46 |
| Total Purchased Property Services | \$79,249.23 | \$85,149.59 | | \$164,398.82 |
| 500 Other Purchased Services | | | | |
| 562 Tuition To Pennsylvania Charter Schools | 202,996.05 | 434,625.87 | | 637,621.92 |
| 580 Travel | 902.24 | 1,674.01 | | 2,576.25 |
| Total Other Purchased Services | \$203,898.29 | \$436,299.88 | | \$640,198.17 |
| 600 Supplies | | | | |
| 610 General Supplies | 150,490.83 | 127,954.38 | 3,164.95 | 281,610.16 |
| 640 Books and Periodicals | 4,147.97 | 2,959.48 | | 7,107.45 |
| 650 Supplies & Fees – Technology Related | 94,176.87 | 174,480.02 | 27,835.60 | 296,492.49 |
| Total Supplies | \$248,815.67 | \$305,393.88 | \$31,000.55 | \$585,210.10 |
| 700 Property | | | | |
| 756 Capitalized Technology Equipment – Original | 12,504.09 | 333,679.57 | | 346,183.66 |
| Total Property | \$12,504.09 | \$333,679.57 | | \$346,183.66 |
| 800 Other Objects | | | | |
| 810 Dues and Fees | | 930.00 | | 930.00 |
| Total Other Objects | | \$930.00 | | \$930.00 |
| Total 1100 Regular Programs – Elementary / Secondary | \$13,489,187.52 | \$15,763,356.95 | \$1,113,408.64 | \$30,365,953.11 |

LEA : 103027503 Plum Borough SD

Printed 11/27/2024 11:14:11 AM

General Fund (10)

1110 Regular Programs

| | Elementary | Secondary | Federal | Total |
|---|------------------------|------------------------|---------|------------------------|
| 100 <u>Personnel Services – Salaries</u> | | | | |
| 100 Personnel Services – Salaries | 7,741,509.00 | 8,822,280.29 | | 16,563,789.29 |
| Total Personnel Services – Salaries | \$7,741,509.00 | \$8,822,280.29 | | \$16,563,789.29 |
| 200 <u>Personnel Services – Employee Benefits</u> | | | | |
| 210 Group Insurance – Contracted Provider | 1,333,577.36 | 1,603,274.92 | | 2,936,852.28 |
| 220 Social Security Contributions | 571,774.39 | 637,483.61 | | 1,209,258.00 |
| 230 PSERS Retirement Contributions | 2,734,330.54 | 2,932,001.34 | | 5,666,331.88 |
| 260 Workers' Compensation | 30,904.61 | 32,605.70 | | 63,510.31 |
| 280 Other Post-Employment Benefits (OPEB) | 147,510.89 | 147,510.88 | | 295,021.77 |
| 291 Other Retirement Plans | 30,000.00 | 30,000.00 | | 60,000.00 |
| Total Personnel Services – Employee Benefits | \$4,848,097.79 | \$5,382,876.45 | | \$10,230,974.24 |
| 300 <u>Purchased Professional and Technical Services</u> | | | | |
| 322 Professional Educational Services – Ius | 9,295.86 | 51,640.70 | | 60,936.56 |
| 329 Professional Educational Services – Other | 345,106.59 | 345,106.59 | | 690,213.18 |
| 330 Other Professional Services | 711.00 | | | 711.00 |
| Total Purchased Professional and Technical Services | \$355,113.45 | \$396,747.29 | | \$751,860.74 |
| 400 <u>Purchased Property Services</u> | | | | |
| 430 Repairs and Maintenance Services | 395.00 | 6,295.36 | | 6,690.36 |
| 440 Rentals | 78,854.23 | 78,854.23 | | 157,708.46 |
| Total Purchased Property Services | \$79,249.23 | \$85,149.59 | | \$164,398.82 |
| 500 <u>Other Purchased Services</u> | | | | |
| 562 Tuition To Pennsylvania Charter Schools | 202,996.05 | 434,625.87 | | 637,621.92 |
| 580 Travel | 902.24 | 1,674.01 | | 2,576.25 |
| Total Other Purchased Services | \$203,898.29 | \$436,299.88 | | \$640,198.17 |
| 600 <u>Supplies</u> | | | | |
| 610 General Supplies | 150,490.83 | 127,954.38 | | 278,445.21 |
| 640 Books and Periodicals | 4,147.97 | 2,959.48 | | 7,107.45 |
| 650 Supplies & Fees – Technology Related | 94,176.87 | 174,480.02 | | 268,656.89 |
| Total Supplies | \$248,815.67 | \$305,393.88 | | \$554,209.55 |
| 700 <u>Property</u> | | | | |
| 756 Capitalized Technology Equipment – Original | 12,504.09 | 333,679.57 | | 346,183.66 |
| Total Property | \$12,504.09 | \$333,679.57 | | \$346,183.66 |
| 800 <u>Other Objects</u> | | | | |
| 810 Dues and Fees | | 930.00 | | 930.00 |
| Total Other Objects | | \$930.00 | | \$930.00 |
| Total 1110 Regular Programs | \$13,489,187.52 | \$15,763,356.95 | | \$29,252,544.47 |

LEA : 103027503 Plum Borough SD

Printed 11/27/2024 11:14:11 AM

General Fund (10)

| 1190 Federally-Funded Regular Programs | <u>Elementary</u> | <u>Secondary</u> | <u>Federal</u> | <u>Total</u> |
|---|-------------------|------------------|----------------|----------------|
| 100 <u>Personnel Services – Salaries</u> | | | | |
| 100 Personnel Services – Salaries | | | 757,397.01 | 757,397.01 |
| Total Personnel Services – Salaries | | | \$757,397.01 | \$757,397.01 |
| 200 <u>Personnel Services – Employee Benefits</u> | | | | |
| 210 Group Insurance – Contracted Provider | | | 127,115.68 | 127,115.68 |
| 220 Social Security Contributions | | | 63,625.82 | 63,625.82 |
| 230 PSERS Retirement Contributions | | | 130,942.74 | 130,942.74 |
| 260 Workers' Compensation | | | 3,326.84 | 3,326.84 |
| Total Personnel Services – Employee Benefits | | | \$325,011.08 | \$325,011.08 |
| 600 <u>Supplies</u> | | | | |
| 610 General Supplies | | | 3,164.95 | 3,164.95 |
| 650 Supplies & Fees – Technology Related | | | 27,835.60 | 27,835.60 |
| Total Supplies | | | \$31,000.55 | \$31,000.55 |
| Total 1190 Federally-Funded Regular Programs | | | \$1,113,408.64 | \$1,113,408.64 |

LEA : 103027503 Plum Borough SD

Printed 11/27/2024 11:14:11 AM

General Fund (10)

| 1200 Special Programs – Elementary / Secondary | Elementary | Secondary | Federal | Total |
|--|-----------------------|-----------------------|---------------------|-----------------------|
| 100 Personnel Services – Salaries | | | | |
| 100 Personnel Services – Salaries | 1,285,860.64 | 1,151,792.99 | 496,206.00 | 2,933,859.63 |
| Total Personnel Services – Salaries | \$1,285,860.64 | \$1,151,792.99 | \$496,206.00 | \$2,933,859.63 |
| 200 Personnel Services – Employee Benefits | | | | |
| 210 Group Insurance – Contracted Provider | 153,606.73 | 197,003.90 | 107,637.35 | 458,247.98 |
| 220 Social Security Contributions | 96,079.08 | 83,207.42 | 37,833.08 | 217,119.58 |
| 230 PSERS Retirement Contributions | 517,148.54 | 412,971.62 | 55,494.92 | 985,615.08 |
| 260 Workers' Compensation | 5,248.39 | 4,648.76 | 1,978.20 | 11,875.35 |
| 280 Other Post-Employment Benefits (OPEB) | 11,112.23 | 11,112.23 | | 22,224.46 |
| Total Personnel Services – Employee Benefits | \$783,194.97 | \$708,943.93 | \$202,943.55 | \$1,695,082.45 |
| 300 Purchased Professional and Technical Services | | | | |
| 322 Professional Educational Services – lus | 257,749.15 | 178,462.15 | | 436,211.30 |
| 329 Professional Educational Services – Other | 9,887.90 | 9,887.90 | | 19,775.80 |
| 330 Other Professional Services | 171,984.45 | 167,993.38 | | 339,977.83 |
| Total Purchased Professional and Technical Services | \$439,621.50 | \$356,343.43 | | \$795,964.93 |
| 400 Purchased Property Services | | | | |
| 430 Repairs and Maintenance Services | 280.00 | 280.00 | | 560.00 |
| Total Purchased Property Services | \$280.00 | \$280.00 | | \$560.00 |
| 500 Other Purchased Services | | | | |
| 561 Tuition To Other School Districts Within the State | 97,868.28 | 97,868.27 | | 195,736.55 |
| 562 Tuition To Pennsylvania Charter Schools | 175,925.60 | 453,300.80 | | 629,226.40 |
| 567 Tuition To Approved Private Schools (APS) and PA Chartered Schools for the Deaf and Blind | 545,163.56 | 457,907.98 | | 1,003,071.54 |
| 568 Tuition To Private Residential Rehabilitative Institutions (PRRI) [In-State] and Detention Centers | | 29,528.77 | | 29,528.77 |
| 569 Tuition – Other | 149,058.83 | 149,058.83 | | 298,117.66 |
| 580 Travel | 49.11 | 4,153.00 | | 4,202.11 |
| Total Other Purchased Services | \$968,065.38 | \$1,191,817.65 | | \$2,159,883.03 |
| 600 Supplies | | | | |
| 610 General Supplies | 54,295.40 | 42,019.80 | | 96,315.20 |
| 630 Food | | 401.72 | | 401.72 |
| 640 Books and Periodicals | 89,420.70 | 47,884.06 | | 137,304.76 |
| 650 Supplies & Fees – Technology Related | 21,206.99 | 1,768.11 | | 22,975.10 |
| Total Supplies | \$164,923.09 | \$92,073.69 | | \$256,996.78 |
| 700 Property | | | | |
| 762 Capitalized Equipment - Replacement | 8,101.00 | | | 8,101.00 |
| Total Property | \$8,101.00 | | | \$8,101.00 |
| 800 Other Objects | | | | |
| 810 Dues and Fees | 478.00 | 478.00 | | 956.00 |
| Total Other Objects | \$478.00 | \$478.00 | | \$956.00 |
| Total 1200 Special Programs – Elementary / Secondary | \$3,650,524.58 | \$3,501,729.69 | \$699,149.55 | \$7,851,403.82 |

LEA : 103027503 Plum Borough SD

Printed 11/27/2024 11:14:11 AM

General Fund (10)

1210 Life Skills Support

| | <u>Elementary</u> | <u>Secondary</u> | <u>Federal</u> | <u>Total</u> |
|---|---------------------|---------------------|---------------------|---------------------|
| 100 <u>Personnel Services – Salaries</u> | | | | |
| 100 Personnel Services – Salaries | | 61,800.00 | 155,500.00 | 217,300.00 |
| Total Personnel Services – Salaries | | \$61,800.00 | \$155,500.00 | \$217,300.00 |
| 200 <u>Personnel Services – Employee Benefits</u> | | | | |
| 210 Group Insurance – Contracted Provider | | 23,321.04 | 45,811.80 | 69,132.84 |
| 220 Social Security Contributions | | 3,462.83 | 11,895.75 | 15,358.58 |
| 230 PSERS Retirement Contributions | 30,389.88 | 21,012.00 | 22,480.32 | 73,882.20 |
| 260 Workers' Compensation | | 247.05 | 622.00 | 869.05 |
| Total Personnel Services – Employee Benefits | \$30,389.88 | \$48,042.92 | \$80,809.87 | \$159,242.67 |
| 300 <u>Purchased Professional and Technical Services</u> | | | | |
| 322 Professional Educational Services – lus | 79,287.00 | | | 79,287.00 |
| Total Purchased Professional and Technical Services | \$79,287.00 | | | \$79,287.00 |
| 500 <u>Other Purchased Services</u> | | | | |
| 580 Travel | 49.11 | 51.58 | | 100.69 |
| Total Other Purchased Services | \$49.11 | \$51.58 | | \$100.69 |
| 600 <u>Supplies</u> | | | | |
| 610 General Supplies | 1,396.14 | 1,815.41 | | 3,211.55 |
| Total Supplies | \$1,396.14 | \$1,815.41 | | \$3,211.55 |
| Total 1210 Life Skills Support | \$111,122.13 | \$111,709.91 | \$236,309.87 | \$459,141.91 |

LEA : 103027503 Plum Borough SD

Printed 11/27/2024 11:14:11 AM

General Fund (10)

1220 Sensory Support

| | <u>Elementary</u> | <u>Secondary</u> | <u>Federal</u> | <u>Total</u> |
|---|---------------------|---------------------|----------------|---------------------|
| 100 <u>Personnel Services – Salaries</u> | | | | |
| 100 Personnel Services – Salaries | 147,920.06 | 76,261.19 | | 224,181.25 |
| Total Personnel Services – Salaries | \$147,920.06 | \$76,261.19 | | \$224,181.25 |
| 200 <u>Personnel Services – Employee Benefits</u> | | | | |
| 210 Group Insurance – Contracted Provider | 47,607.48 | 13,587.20 | | 61,194.68 |
| 220 Social Security Contributions | 10,697.87 | 5,649.03 | | 16,346.90 |
| 230 PSERS Retirement Contributions | 50,293.03 | 25,928.79 | | 76,221.82 |
| 260 Workers' Compensation | 540.65 | 356.16 | | 896.81 |
| Total Personnel Services – Employee Benefits | \$109,139.03 | \$45,521.18 | | \$154,660.21 |
| 300 <u>Purchased Professional and Technical Services</u> | | | | |
| 322 Professional Educational Services – Ius | 69,161.28 | 69,161.28 | | 138,322.56 |
| 330 Other Professional Services | 41,510.56 | 40,867.50 | | 82,378.06 |
| Total Purchased Professional and Technical Services | \$110,671.84 | \$110,028.78 | | \$220,700.62 |
| 600 <u>Supplies</u> | | | | |
| 610 General Supplies | 10,552.36 | 8,547.80 | | 19,100.16 |
| 650 Supplies & Fees – Technology Related | 1,964.64 | 1,347.12 | | 3,311.76 |
| Total Supplies | \$12,517.00 | \$9,894.92 | | \$22,411.92 |
| 700 <u>Property</u> | | | | |
| 762 Capitalized Equipment - Replacement | 8,101.00 | | | 8,101.00 |
| Total Property | \$8,101.00 | | | \$8,101.00 |
| 800 <u>Other Objects</u> | | | | |
| 810 Dues and Fees | 478.00 | 478.00 | | 956.00 |
| Total Other Objects | \$478.00 | \$478.00 | | \$956.00 |
| Total 1220 Sensory Support | \$388,826.93 | \$242,184.07 | | \$631,011.00 |

LEA : 103027503 Plum Borough SD

Printed 11/27/2024 11:14:11 AM

General Fund (10)

1230 Emotional Support

| | <u>Elementary</u> | <u>Secondary</u> | <u>Federal</u> | <u>Total</u> |
|---|---------------------|---------------------|----------------|---------------------|
| 100 <u>Personnel Services – Salaries</u> | | | | |
| 100 Personnel Services – Salaries | 161,261.59 | 9,881.25 | | 171,142.84 |
| Total Personnel Services – Salaries | \$161,261.59 | \$9,881.25 | | \$171,142.84 |
| 200 <u>Personnel Services – Employee Benefits</u> | | | | |
| 210 Group Insurance – Contracted Provider | 55,240.83 | 7,376.60 | | 62,617.43 |
| 220 Social Security Contributions | 15,515.07 | 702.09 | | 16,217.16 |
| 230 PSERS Retirement Contributions | 35,986.33 | 3,359.63 | | 39,345.96 |
| 260 Workers' Compensation | 866.73 | 39.53 | | 906.26 |
| 280 Other Post-Employment Benefits (OPEB) | 11,112.23 | 11,112.23 | | 22,224.46 |
| Total Personnel Services – Employee Benefits | \$118,721.19 | \$22,590.08 | | \$141,311.27 |
| 300 <u>Purchased Professional and Technical Services</u> | | | | |
| 322 Professional Educational Services – lus | 94,775.19 | 94,775.19 | | 189,550.38 |
| Total Purchased Professional and Technical Services | \$94,775.19 | \$94,775.19 | | \$189,550.38 |
| 600 <u>Supplies</u> | | | | |
| 610 General Supplies | 354.87 | 354.87 | | 709.74 |
| 650 Supplies & Fees – Technology Related | 10,771.20 | | | 10,771.20 |
| Total Supplies | \$11,126.07 | \$354.87 | | \$11,480.94 |
| Total 1230 Emotional Support | \$385,884.04 | \$127,601.39 | | \$513,485.43 |

LEA : 103027503 Plum Borough SD

Printed 11/27/2024 11:14:11 AM

General Fund (10)

1240 Academic Support

| | <u>Elementary</u> | <u>Secondary</u> | <u>Federal</u> | <u>Total</u> |
|---|-----------------------|-----------------------|---------------------|-----------------------|
| 100 <u>Personnel Services – Salaries</u> | | | | |
| 100 Personnel Services – Salaries | 976,678.99 | 1,003,850.55 | 340,706.00 | 2,321,235.54 |
| Total Personnel Services – Salaries | \$976,678.99 | \$1,003,850.55 | \$340,706.00 | \$2,321,235.54 |
| 200 <u>Personnel Services – Employee Benefits</u> | | | | |
| 210 Group Insurance – Contracted Provider | 50,758.42 | 152,719.06 | 61,825.55 | 265,303.03 |
| 220 Social Security Contributions | 69,866.14 | 73,393.47 | 25,937.33 | 169,196.94 |
| 230 PSERS Retirement Contributions | 400,479.30 | 362,671.20 | 33,014.60 | 796,165.10 |
| 260 Workers' Compensation | 3,841.01 | 4,006.02 | 1,356.20 | 9,203.23 |
| Total Personnel Services – Employee Benefits | \$524,944.87 | \$592,789.75 | \$122,133.68 | \$1,239,868.30 |
| 300 <u>Purchased Professional and Technical Services</u> | | | | |
| 322 Professional Educational Services – Ius | 6,250.00 | 6,250.00 | | 12,500.00 |
| 329 Professional Educational Services – Other | 9,887.90 | 9,887.90 | | 19,775.80 |
| 330 Other Professional Services | 2,300.00 | 2,300.00 | | 4,600.00 |
| Total Purchased Professional and Technical Services | \$18,437.90 | \$18,437.90 | | \$36,875.80 |
| 500 <u>Other Purchased Services</u> | | | | |
| 562 Tuition To Pennsylvania Charter Schools | 175,925.60 | 453,300.80 | | 629,226.40 |
| 567 Tuition To Approved Private Schools (APS) and PA Chartered Schools for the Deaf and Blind | 94,330.11 | 94,330.11 | | 188,660.22 |
| 580 Travel | | 4,101.42 | | 4,101.42 |
| Total Other Purchased Services | \$270,255.71 | \$551,732.33 | | \$821,988.04 |
| 600 <u>Supplies</u> | | | | |
| 610 General Supplies | 35,898.35 | 30,718.28 | | 66,616.63 |
| 630 Food | | 401.72 | | 401.72 |
| 640 Books and Periodicals | 89,420.70 | 47,884.06 | | 137,304.76 |
| 650 Supplies & Fees – Technology Related | 8,471.15 | 420.99 | | 8,892.14 |
| Total Supplies | \$133,790.20 | \$79,425.05 | | \$213,215.25 |
| Total 1240 Academic Support | \$1,924,107.67 | \$2,246,235.58 | \$462,839.68 | \$4,633,182.93 |

LEA : 103027503 Plum Borough SD

Printed 11/27/2024 11:14:11 AM

General Fund (10)

| 1241 Learning Support – Public | Elementary | Secondary | Federal | Total |
|---|-----------------------|-----------------------|---------------------|-----------------------|
| 100 Personnel Services – Salaries | | | | |
| 100 Personnel Services – Salaries | 965,158.99 | 797,850.55 | 340,706.00 | 2,103,715.54 |
| Total Personnel Services – Salaries | \$965,158.99 | \$797,850.55 | \$340,706.00 | \$2,103,715.54 |
| 200 Personnel Services – Employee Benefits | | | | |
| 210 Group Insurance – Contracted Provider | 34,450.56 | 94,416.64 | 61,825.55 | 190,692.75 |
| 220 Social Security Contributions | 69,112.96 | 58,401.72 | 25,937.33 | 153,452.01 |
| 230 PSERS Retirement Contributions | 396,562.50 | 292,631.10 | 33,014.60 | 722,208.20 |
| 260 Workers' Compensation | 3,651.31 | 3,182.10 | 1,356.20 | 8,189.61 |
| Total Personnel Services – Employee Benefits | \$503,777.33 | \$448,631.56 | \$122,133.68 | \$1,074,542.57 |
| 300 Purchased Professional and Technical Services | | | | |
| 322 Professional Educational Services – Ius | 6,250.00 | 6,250.00 | | 12,500.00 |
| 329 Professional Educational Services – Other | 9,887.90 | 9,887.90 | | 19,775.80 |
| 330 Other Professional Services | 2,300.00 | 2,300.00 | | 4,600.00 |
| Total Purchased Professional and Technical Services | \$18,437.90 | \$18,437.90 | | \$36,875.80 |
| 500 Other Purchased Services | | | | |
| 562 Tuition To Pennsylvania Charter Schools | 175,925.60 | 453,300.80 | | 629,226.40 |
| 567 Tuition To Approved Private Schools (APS) and PA Chartered Schools for the Deaf and Blind | 94,330.11 | 94,330.11 | | 188,660.22 |
| 580 Travel | | 4,101.42 | | 4,101.42 |
| Total Other Purchased Services | \$270,255.71 | \$551,732.33 | | \$821,988.04 |
| 600 Supplies | | | | |
| 610 General Supplies | 35,674.07 | 30,355.06 | | 66,029.13 |
| 640 Books and Periodicals | 89,420.70 | 47,884.06 | | 137,304.76 |
| 650 Supplies & Fees – Technology Related | 8,471.15 | 420.99 | | 8,892.14 |
| Total Supplies | \$133,565.92 | \$78,660.11 | | \$212,226.03 |
| Total 1241 Learning Support – Public | \$1,891,195.85 | \$1,895,312.45 | \$462,839.68 | \$4,249,347.98 |

LEA : 103027503 Plum Borough SD

Printed 11/27/2024 11:14:11 AM

General Fund (10)

1243 Gifted Support

| | <u>Elementary</u> | <u>Secondary</u> | <u>Federal</u> | <u>Total</u> |
|--|--------------------|---------------------|----------------|---------------------|
| 100 <u>Personnel Services – Salaries</u> | | | | |
| 100 Personnel Services – Salaries | 11,520.00 | 206,000.00 | | 217,520.00 |
| Total Personnel Services – Salaries | \$11,520.00 | \$206,000.00 | | \$217,520.00 |
| 200 <u>Personnel Services – Employee Benefits</u> | | | | |
| 210 Group Insurance – Contracted Provider | 16,307.86 | 58,302.42 | | 74,610.28 |
| 220 Social Security Contributions | 753.18 | 14,991.75 | | 15,744.93 |
| 230 PSERS Retirement Contributions | 3,916.80 | 70,040.10 | | 73,956.90 |
| 260 Workers' Compensation | 189.70 | 823.92 | | 1,013.62 |
| Total Personnel Services – Employee Benefits | \$21,167.54 | \$144,158.19 | | \$165,325.73 |
| 600 <u>Supplies</u> | | | | |
| 610 General Supplies | 224.28 | 363.22 | | 587.50 |
| 630 Food | | 401.72 | | 401.72 |
| Total Supplies | \$224.28 | \$764.94 | | \$989.22 |
| Total 1243 Gifted Support | \$32,911.82 | \$350,923.13 | | \$383,834.95 |

LEA : 103027503 Plum Borough SD

Printed 11/27/2024 11:14:11 AM

General Fund (10)

1260 Physical Support

| | <u>Elementary</u> | <u>Secondary</u> | <u>Federal</u> | <u>Total</u> |
|---|---------------------|---------------------|----------------|---------------------|
| 300 <u>Purchased Professional and Technical Services</u> | | | | |
| 322 Professional Educational Services – Ius | 8,275.68 | 8,275.68 | | 16,551.36 |
| 330 Other Professional Services | 124,825.89 | 124,825.88 | | 249,651.77 |
| Total Purchased Professional and Technical Services | \$133,101.57 | \$133,101.56 | | \$266,203.13 |
| 400 <u>Purchased Property Services</u> | | | | |
| 430 Repairs and Maintenance Services | 280.00 | 280.00 | | 560.00 |
| Total Purchased Property Services | \$280.00 | \$280.00 | | \$560.00 |
| 600 <u>Supplies</u> | | | | |
| 610 General Supplies | 4,685.00 | | | 4,685.00 |
| Total Supplies | \$4,685.00 | | | \$4,685.00 |
| Total 1260 Physical Support | \$138,066.57 | \$133,381.56 | | \$271,448.13 |

LEA : 103027503 Plum Borough SD

Printed 11/27/2024 11:14:11 AM

General Fund (10)

1280 Early Intervention Support

| | <u>Elementary</u> | <u>Secondary</u> | <u>Federal</u> | <u>Total</u> |
|--|-------------------|------------------|----------------|--------------|
| 300 <u>Purchased Professional and Technical Services</u> | | | | |
| 330 Other Professional Services | 3,348.00 | | | 3,348.00 |
| Total Purchased Professional and Technical Services | \$3,348.00 | | | \$3,348.00 |
| Total 1280 Early Intervention Support | \$3,348.00 | | | \$3,348.00 |

LEA : 103027503 Plum Borough SD

Printed 11/27/2024 11:14:11 AM

General Fund (10)

| 1290 Special Programs - Other Support | <u>Elementary</u> | <u>Secondary</u> | <u>Federal</u> | <u>Total</u> |
|--|-------------------|------------------|----------------|----------------|
| 500 <u>Other Purchased Services</u> | | | | |
| 561 Tuition To Other School Districts Within the State | 97,868.28 | 97,868.27 | | 195,736.55 |
| 567 Tuition To Approved Private Schools (APS) and PA Chartered Schools for the Deaf and Blind | 450,833.45 | 363,577.87 | | 814,411.32 |
| 568 Tuition To Private Residential Rehabilitative Institutions (PRRI) [In-State] and Detention Centers | | 29,528.77 | | 29,528.77 |
| 569 Tuition – Other | 149,058.83 | 149,058.83 | | 298,117.66 |
| Total Other Purchased Services | \$697,760.56 | \$640,033.74 | | \$1,337,794.30 |
| 600 <u>Supplies</u> | | | | |
| 610 General Supplies | 1,408.68 | 583.44 | | 1,992.12 |
| Total Supplies | \$1,408.68 | \$583.44 | | \$1,992.12 |
| Total 1290 Special Programs - Other Support | \$699,169.24 | \$640,617.18 | | \$1,339,786.42 |

LEA : 103027503 Plum Borough SD

Printed 11/27/2024 11:14:11 AM

General Fund (10)

1300 Vocational Education

500 Other Purchased Services

| | <u>Elementary</u> | <u>Secondary</u> | <u>Federal</u> | <u>Total</u> |
|--|-------------------|------------------|----------------|--------------|
| 564 Tuition To Career and Technology Centers | | 799,332.03 | | 799,332.03 |
| Total Other Purchased Services | | \$799,332.03 | | \$799,332.03 |
| Total 1300 Vocational Education | | \$799,332.03 | | \$799,332.03 |

LEA : 103027503 Plum Borough SD

Printed 11/27/2024 11:14:11 AM

General Fund (10)

| 1400 Other Instructional Programs – Elementary / Secondary | <u>Elementary</u> | <u>Secondary</u> | <u>Federal</u> | <u>Total</u> |
|---|-------------------|--------------------|--------------------|--------------------|
| 100 <u>Personnel Services – Salaries</u> | | | | |
| 100 Personnel Services – Salaries | | 3,465.00 | 13,000.00 | 16,465.00 |
| Total Personnel Services – Salaries | | \$3,465.00 | \$13,000.00 | \$16,465.00 |
| 200 <u>Personnel Services – Employee Benefits</u> | | | | |
| 220 Social Security Contributions | | 254.83 | 1,475.02 | 1,729.85 |
| 230 PSERS Retirement Contributions | | 1,178.10 | 2,242.98 | 3,421.08 |
| 260 Workers’ Compensation | | 13.86 | 52.00 | 65.86 |
| Total Personnel Services – Employee Benefits | | \$1,446.79 | \$3,770.00 | \$5,216.79 |
| 600 <u>Supplies</u> | | | | |
| 610 General Supplies | 1,721.64 | 6,612.18 | | 8,333.82 |
| Total Supplies | \$1,721.64 | \$6,612.18 | | \$8,333.82 |
| Total 1400 Other Instructional Programs – Elementary / Secondary | \$1,721.64 | \$11,523.97 | \$16,770.00 | \$30,015.61 |

LEA : 103027503 Plum Borough SD

Printed 11/27/2024 11:14:11 AM

General Fund (10)

| 1430 Homebound Instruction | <u>Elementary</u> | <u>Secondary</u> | <u>Federal</u> | <u>Total</u> |
|---|-------------------|------------------|----------------|--------------|
| 100 <u>Personnel Services – Salaries</u> | | | | |
| 100 Personnel Services – Salaries | | 3,465.00 | | 3,465.00 |
| Total Personnel Services – Salaries | | \$3,465.00 | | \$3,465.00 |
| 200 <u>Personnel Services – Employee Benefits</u> | | | | |
| 220 Social Security Contributions | | 254.83 | | 254.83 |
| 230 PSERS Retirement Contributions | | 1,178.10 | | 1,178.10 |
| 260 Workers' Compensation | | 13.86 | | 13.86 |
| Total Personnel Services – Employee Benefits | | \$1,446.79 | | \$1,446.79 |
| Total 1430 Homebound Instruction | | \$4,911.79 | | \$4,911.79 |

LEA : 103027503 Plum Borough SD

Printed 11/27/2024 11:14:11 AM

General Fund (10)

| | | | | |
|--|-------------------|------------------|----------------|--------------|
| 1450 Instructional Programs Outside the Established School Day | <u>Elementary</u> | <u>Secondary</u> | <u>Federal</u> | <u>Total</u> |
| 100 <u>Personnel Services – Salaries</u> | | | | |
| 100 Personnel Services – Salaries | | | 13,000.00 | 13,000.00 |
| Total Personnel Services – Salaries | | | \$13,000.00 | \$13,000.00 |
| 200 <u>Personnel Services – Employee Benefits</u> | | | | |
| 220 Social Security Contributions | | | 1,475.02 | 1,475.02 |
| 230 PSERS Retirement Contributions | | | 2,242.98 | 2,242.98 |
| 260 Workers’ Compensation | | | 52.00 | 52.00 |
| Total Personnel Services – Employee Benefits | | | \$3,770.00 | \$3,770.00 |
| Total 1450 Instructional Programs Outside the Established School Day | | | \$16,770.00 | \$16,770.00 |

LEA : 103027503 Plum Borough SD

Printed 11/27/2024 11:14:11 AM

General Fund (10)

1490 Additional Other Instructional Programs

| | <u>Elementary</u> | <u>Secondary</u> | <u>Federal</u> | <u>Total</u> |
|--|-------------------|------------------|----------------|--------------|
| 600 <u>Supplies</u> | | | | |
| 610 General Supplies | 1,721.64 | 6,612.18 | | 8,333.82 |
| Total Supplies | \$1,721.64 | \$6,612.18 | | \$8,333.82 |
| Total 1490 Additional Other Instructional Programs | \$1,721.64 | \$6,612.18 | | \$8,333.82 |

LEA : 103027503 Plum Borough SD

Printed 11/27/2024 11:14:11 AM

General Fund (10)

1500 Nonpublic School Programs

Elementary Secondary Federal Total

300 Purchased Professional and Technical Services

329 Professional Educational Services – Other 5,509.25 5,509.25

330 Other Professional Services 22,652.16 22,652.16

Total Purchased Professional and Technical Services \$28,161.41 \$28,161.41

600 Supplies

610 General Supplies 2,181.01 2,181.01

Total Supplies \$2,181.01 \$2,181.01

Total 1500 Nonpublic School Programs \$30,342.42 \$30,342.42

LEA : 103027503 Plum Borough SD

Printed 11/27/2024 11:14:19 AM

General Fund (10)

2000 Support Services

Total

| | |
|--|----------------|
| 100 Personnel Services – Salaries | 9,296,205.79 |
| Total Personnel Services – Salaries | \$9,296,205.79 |
| 200 Personnel Services – Employee Benefits | |
| 210 Group Insurance – Contracted Provider | 1,324,727.31 |
| 220 Social Security Contributions | 682,317.49 |
| 230 PSERS Retirement Contributions | 2,984,874.88 |
| 240 Tuition Reimbursement | 65,342.32 |
| 260 Workers' Compensation | 37,194.18 |
| 280 Other Post-Employment Benefits (OPEB) | 4,596.34 |
| Total Personnel Services – Employee Benefits | \$5,099,052.52 |
| 300 Purchased Professional and Technical Services | |
| 322 Professional Educational Services – Ius | 6,600.00 |
| 329 Professional Educational Services – Other | 54,442.80 |
| 330 Other Professional Services | 425,756.27 |
| 340 Technical Services | 352,211.16 |
| 360 Employee Training and Development Services | 19,880.84 |
| Total Purchased Professional and Technical Services | \$858,891.07 |
| 400 Purchased Property Services | |
| 410 Cleaning Services | 139,656.75 |
| 420 Utility Services | 135,581.70 |
| 430 Repairs and Maintenance Services | 686,826.40 |
| 440 Rentals | 62,395.72 |
| Total Purchased Property Services | \$1,024,460.57 |
| 500 Other Purchased Services | |
| 516 Student Transportation Services From the IU | 10,933.99 |
| 519 Student Transportation Services From Other Sources | 17,345.66 |
| 520 Insurance – General | 334.00 |
| 522 Automotive Liability Insurance | 57,817.00 |
| 523 General Property and Liability Insurance | 166,306.50 |
| 529 Other Insurance | 24,916.13 |
| 530 Communications | 165,562.01 |
| 580 Travel | 23,940.06 |
| 595 IU Payments By Withholding | 45,410.00 |
| Total Other Purchased Services | \$512,565.35 |
| 600 Supplies | |
| 610 General Supplies | 1,009,955.85 |
| 620 Energy | 1,213,917.50 |
| 630 Food | 15,384.66 |
| 640 Books and Periodicals | 15,177.00 |
| 650 Supplies & Fees – Technology Related | 752,033.80 |
| Total Supplies | \$3,006,468.81 |

LEA : 103027503 Plum Borough SD

Printed 11/27/2024 11:14:19 AM

| | |
|--|-----------------|
| General Fund (10) | |
| 2000 Support Services | <u>Total</u> |
| 700 <u>Property</u> | |
| 762 Capitalized Equipment - Replacement | 109,882.83 |
| Total Property | \$109,882.83 |
| 800 <u>Other Objects</u> | |
| 810 Dues and Fees | 29,644.46 |
| 820 Claims and Judgments Against the LEA | 12,000.00 |
| Total Other Objects | \$41,644.46 |
| Total 2000 Support Services | \$19,949,171.40 |

LEA : 103027503 Plum Borough SD

Printed 11/27/2024 11:14:19 AM

General Fund (10)

| 2100 Support Services – Students | Elementary | Secondary | Federal | Total |
|--|--------------|----------------|--------------|----------------|
| 100 <u>Personnel Services – Salaries</u> | | | | |
| 100 Personnel Services – Salaries | 341,640.49 | 687,870.41 | 199,347.94 | 1,324,704.36 |
| Total Personnel Services – Salaries | \$341,640.49 | \$687,870.41 | \$199,347.94 | \$1,324,704.36 |
| 200 <u>Personnel Services – Employee Benefits</u> | | | | |
| 210 Group Insurance – Contracted Provider | 38,831.88 | 120,666.17 | 64,370.20 | 237,847.81 |
| 220 Social Security Contributions | 25,518.67 | 51,772.12 | 11,689.02 | 96,143.92 |
| 230 PSERS Retirement Contributions | 130,093.91 | 253,726.83 | 22,089.66 | 437,477.91 |
| 260 Workers' Compensation | 1,416.70 | 2,850.40 | 611.19 | 5,265.23 |
| 280 Other Post-Employment Benefits (OPEB) | 5.40 | 5.40 | | 10.80 |
| Total Personnel Services – Employee Benefits | \$195,866.56 | \$429,020.92 | \$98,760.07 | \$776,745.67 |
| 300 <u>Purchased Professional and Technical Services</u> | | | | |
| 330 Other Professional Services | 50,996.18 | 50,996.18 | | 101,992.36 |
| Total Purchased Professional and Technical Services | \$50,996.18 | \$50,996.18 | | \$101,992.36 |
| 500 <u>Other Purchased Services</u> | | | | |
| 580 Travel | 57.37 | 57.36 | | 114.73 |
| Total Other Purchased Services | \$57.37 | \$57.36 | | \$114.73 |
| 600 <u>Supplies</u> | | | | |
| 610 General Supplies | 7,966.19 | 11,801.35 | 1,722.04 | 21,696.54 |
| 650 Supplies & Fees – Technology Related | 6,000.00 | 17,999.98 | | 23,999.98 |
| Total Supplies | \$13,966.19 | \$29,801.33 | \$1,722.04 | \$45,696.52 |
| 800 <u>Other Objects</u> | | | | |
| 810 Dues and Fees | 637.49 | 637.48 | | 1,274.97 |
| Total Other Objects | \$637.49 | \$637.48 | | \$1,274.97 |
| Total 2100 Support Services – Students | \$603,164.28 | \$1,198,383.68 | \$299,830.05 | \$2,250,528.61 |

LEA : 103027503 Plum Borough SD

Printed 11/27/2024 11:14:19 AM

General Fund (10)

| 2120 Guidance Services | Elementary | Secondary | Federal | Total |
|--|--------------|----------------|---------|----------------|
| 100 <u>Personnel Services – Salaries</u> | | | | |
| 100 Personnel Services – Salaries | 284,533.72 | 630,763.64 | | 915,297.36 |
| Total Personnel Services – Salaries | \$284,533.72 | \$630,763.64 | | \$915,297.36 |
| 200 <u>Personnel Services – Employee Benefits</u> | | | | |
| 210 Group Insurance – Contracted Provider | 26,905.98 | 108,740.27 | | 135,646.25 |
| 220 Social Security Contributions | 20,511.88 | 46,765.33 | | 67,277.21 |
| 230 PSERS Retirement Contributions | 88,701.36 | 212,334.28 | | 301,035.64 |
| 260 Workers' Compensation | 1,090.20 | 2,523.91 | | 3,614.11 |
| Total Personnel Services – Employee Benefits | \$137,209.42 | \$370,363.79 | | \$507,573.21 |
| 300 <u>Purchased Professional and Technical Services</u> | | | | |
| 330 Other Professional Services | 1,850.00 | 1,850.00 | | 3,700.00 |
| Total Purchased Professional and Technical Services | \$1,850.00 | \$1,850.00 | | \$3,700.00 |
| 600 <u>Supplies</u> | | | | |
| 610 General Supplies | 773.35 | 4,608.52 | | 5,381.87 |
| 650 Supplies & Fees – Technology Related | 6,000.00 | 17,999.98 | | 23,999.98 |
| Total Supplies | \$6,773.35 | \$22,608.50 | | \$29,381.85 |
| Total 2120 Guidance Services | \$430,366.49 | \$1,025,585.93 | | \$1,455,952.42 |

LEA : 103027503 Plum Borough SD

Printed 11/27/2024 11:14:19 AM

General Fund (10)

2130 Attendance Services

Elementary Secondary Federal Total

| | | | | |
|---|--|--|--|-------------|
| 100 <u>Personnel Services – Salaries</u> | | | | |
| 100 Personnel Services – Salaries | | | | 38,068.02 |
| Total Personnel Services – Salaries | | | | \$38,068.02 |
| 200 <u>Personnel Services – Employee Benefits</u> | | | | |
| 210 Group Insurance – Contracted Provider | | | | 516.20 |
| 220 Social Security Contributions | | | | 2,912.20 |
| 230 PSERS Retirement Contributions | | | | 11,923.19 |
| 260 Workers' Compensation | | | | 152.32 |
| Total Personnel Services – Employee Benefits | | | | \$15,503.91 |
| 600 <u>Supplies</u> | | | | |
| 610 General Supplies | | | | 206.96 |
| Total Supplies | | | | \$206.96 |
| Total 2130 Attendance Services | | | | \$53,778.89 |

LEA : 103027503 Plum Borough SD

Printed 11/27/2024 11:14:19 AM

| | | | | |
|--|-------------------|------------------|----------------|--------------|
| General Fund (10) | | | | |
| 2140 Psychological Services | <u>Elementary</u> | <u>Secondary</u> | <u>Federal</u> | <u>Total</u> |
| 100 <u>Personnel Services – Salaries</u> | | | | |
| 100 Personnel Services – Salaries | 57,106.77 | 57,106.77 | | 114,213.54 |
| Total Personnel Services – Salaries | \$57,106.77 | \$57,106.77 | | \$114,213.54 |
| 200 <u>Personnel Services – Employee Benefits</u> | | | | |
| 210 Group Insurance – Contracted Provider | 11,925.90 | 11,925.90 | | 23,851.80 |
| 220 Social Security Contributions | 5,006.79 | 5,006.79 | | 10,013.58 |
| 230 PSERS Retirement Contributions | 41,392.55 | 41,392.55 | | 82,785.10 |
| 260 Workers' Compensation | 326.50 | 326.49 | | 652.99 |
| 280 Other Post-Employment Benefits (OPEB) | 5.40 | 5.40 | | 10.80 |
| Total Personnel Services – Employee Benefits | \$58,657.14 | \$58,657.13 | | \$117,314.27 |
| 300 <u>Purchased Professional and Technical Services</u> | | | | |
| 330 Other Professional Services | 49,146.18 | 49,146.18 | | 98,292.36 |
| Total Purchased Professional and Technical Services | \$49,146.18 | \$49,146.18 | | \$98,292.36 |
| 500 <u>Other Purchased Services</u> | | | | |
| 580 Travel | 57.37 | 57.36 | | 114.73 |
| Total Other Purchased Services | \$57.37 | \$57.36 | | \$114.73 |
| 600 <u>Supplies</u> | | | | |
| 610 General Supplies | 7,192.84 | 7,192.83 | 1,722.04 | 16,107.71 |
| Total Supplies | \$7,192.84 | \$7,192.83 | \$1,722.04 | \$16,107.71 |
| 800 <u>Other Objects</u> | | | | |
| 810 Dues and Fees | 637.49 | 637.48 | | 1,274.97 |
| Total Other Objects | \$637.49 | \$637.48 | | \$1,274.97 |
| Total 2140 Psychological Services | \$172,797.79 | \$172,797.75 | \$1,722.04 | \$347,317.58 |

LEA : 103027503 Plum Borough SD

Printed 11/27/2024 11:14:19 AM

General Fund (10)

2160 Social Work Services

| | <u>Elementary</u> | <u>Secondary</u> | <u>Federal</u> | <u>Total</u> |
|---|-------------------|------------------|----------------|--------------|
| 100 <u>Personnel Services – Salaries</u> | | | | |
| 100 Personnel Services – Salaries | | | 199,347.94 | 200,660.44 |
| Total Personnel Services – Salaries | | | \$199,347.94 | \$200,660.44 |
| 200 <u>Personnel Services – Employee Benefits</u> | | | | |
| 210 Group Insurance – Contracted Provider | | | 64,370.20 | 64,370.20 |
| 220 Social Security Contributions | | | 11,689.02 | 11,789.43 |
| 230 PSERS Retirement Contributions | | | 22,089.66 | 22,535.91 |
| 260 Workers' Compensation | | | 611.19 | 616.44 |
| Total Personnel Services – Employee Benefits | | | \$98,760.07 | \$99,311.98 |
| Total 2160 Social Work Services | | | \$298,108.01 | \$299,972.42 |

LEA : 103027503 Plum Borough SD

Printed 11/27/2024 11:14:19 AM

General Fund (10)

| 2170 Student Accounting Services | <u>Elementary</u> | <u>Secondary</u> | <u>Federal</u> | <u>Total</u> |
|---|-------------------|------------------|----------------|--------------|
| 100 <u>Personnel Services – Salaries</u> | | | | |
| 100 Personnel Services – Salaries | | | | 56,465.00 |
| Total Personnel Services – Salaries | | | | \$56,465.00 |
| 200 <u>Personnel Services – Employee Benefits</u> | | | | |
| 210 Group Insurance – Contracted Provider | | | | 13,463.36 |
| 220 Social Security Contributions | | | | 4,151.50 |
| 230 PSERS Retirement Contributions | | | | 19,198.07 |
| 260 Workers' Compensation | | | | 229.37 |
| Total Personnel Services – Employee Benefits | | | | \$37,042.30 |
| Total 2170 Student Accounting Services | | | | \$93,507.30 |

LEA : 103027503 Plum Borough SD

Printed 11/27/2024 11:14:19 AM

General Fund (10)

2200 Support Services – Instructional Staff

| | Elementary | Secondary | Federal | Total |
|--|---------------------|---------------------|-------------------|-----------------------|
| 100 Personnel Services – Salaries | | | | |
| 100 Personnel Services – Salaries | 405,164.91 | 277,924.90 | 5,372.59 | 688,462.40 |
| Total Personnel Services – Salaries | \$405,164.91 | \$277,924.90 | \$5,372.59 | \$688,462.40 |
| 200 Personnel Services – Employee Benefits | | | | |
| 210 Group Insurance – Contracted Provider | 46,515.39 | 29,054.32 | | 75,569.71 |
| 220 Social Security Contributions | 30,590.41 | 21,146.04 | | 51,736.45 |
| 230 PSERS Retirement Contributions | 136,666.39 | 93,330.04 | | 229,996.43 |
| 240 Tuition Reimbursement | 32,671.16 | 32,671.16 | | 65,342.32 |
| 260 Workers' Compensation | 1,499.63 | 1,134.36 | | 2,633.99 |
| Total Personnel Services – Employee Benefits | \$247,942.98 | \$177,335.92 | | \$425,278.90 |
| 300 Purchased Professional and Technical Services | | | | |
| 330 Other Professional Services | 19,105.13 | 19,105.12 | | 38,210.25 |
| 360 Employee Training and Development Services | 6,019.77 | 6,576.67 | | 12,596.44 |
| Total Purchased Professional and Technical Services | \$25,124.90 | \$25,681.79 | | \$50,806.69 |
| 500 Other Purchased Services | | | | |
| 530 Communications | 62.07 | 62.07 | | 124.14 |
| 580 Travel | 242.26 | 242.26 | | 484.52 |
| Total Other Purchased Services | \$304.33 | \$304.33 | | \$608.66 |
| 600 Supplies | | | | |
| 610 General Supplies | 139.15 | 1,229.11 | | 1,368.26 |
| 630 Food | 202.21 | 202.21 | | 404.42 |
| 640 Books and Periodicals | 9,474.41 | 5,702.59 | | 15,177.00 |
| 650 Supplies & Fees – Technology Related | | 8,453.22 | | 8,453.22 |
| Total Supplies | \$9,815.77 | \$15,587.13 | | \$25,402.90 |
| 800 Other Objects | | | | |
| 810 Dues and Fees | 387.00 | 387.00 | | 774.00 |
| Total Other Objects | \$387.00 | \$387.00 | | \$774.00 |
| Total 2200 Support Services – Instructional Staff | \$688,739.89 | \$497,221.07 | \$5,372.59 | \$1,191,333.55 |

LEA : 103027503 Plum Borough SD

Printed 11/27/2024 11:14:19 AM

General Fund (10)

| | | | | |
|---|-------------------|------------------|----------------|--------------|
| 2220 Technology Support Services | <u>Elementary</u> | <u>Secondary</u> | <u>Federal</u> | <u>Total</u> |
| 100 <u>Personnel Services – Salaries</u> | | | | |
| 100 Personnel Services – Salaries | 62,094.08 | 62,094.07 | | 124,188.15 |
| Total Personnel Services – Salaries | \$62,094.08 | \$62,094.07 | | \$124,188.15 |
| 200 <u>Personnel Services – Employee Benefits</u> | | | | |
| 210 Group Insurance – Contracted Provider | 1,756.75 | 1,756.72 | | 3,513.47 |
| 220 Social Security Contributions | 4,756.54 | 4,756.53 | | 9,513.07 |
| 230 PSERS Retirement Contributions | 19,555.45 | 19,555.45 | | 39,110.90 |
| 260 Workers' Compensation | 253.33 | 253.32 | | 506.65 |
| Total Personnel Services – Employee Benefits | \$26,322.07 | \$26,322.02 | | \$52,644.09 |
| Total 2220 Technology Support Services | \$88,416.15 | \$88,416.09 | | \$176,832.24 |

LEA : 103027503 Plum Borough SD

Printed 11/27/2024 11:14:19 AM

General Fund (10)

| 2250 School Library Services | Elementary | Secondary | Federal | Total |
|--|--------------|--------------|---------|--------------|
| 100 Personnel Services – Salaries | | | | |
| 100 Personnel Services – Salaries | 274,180.00 | 142,100.00 | | 416,280.00 |
| Total Personnel Services – Salaries | \$274,180.00 | \$142,100.00 | | \$416,280.00 |
| 200 Personnel Services – Employee Benefits | | | | |
| 210 Group Insurance – Contracted Provider | 30,555.26 | 13,094.22 | | 43,649.48 |
| 220 Social Security Contributions | 20,517.03 | 10,724.16 | | 31,241.19 |
| 230 PSERS Retirement Contributions | 93,221.25 | 48,314.10 | | 141,535.35 |
| 260 Workers' Compensation | 953.18 | 568.56 | | 1,521.74 |
| Total Personnel Services – Employee Benefits | \$145,246.72 | \$72,701.04 | | \$217,947.76 |
| 600 Supplies | | | | |
| 610 General Supplies | 139.15 | 1,229.11 | | 1,368.26 |
| 640 Books and Periodicals | 9,474.41 | 5,702.59 | | 15,177.00 |
| 650 Supplies & Fees – Technology Related | | 8,453.22 | | 8,453.22 |
| Total Supplies | \$9,613.56 | \$15,384.92 | | \$24,998.48 |
| Total 2250 School Library Services | \$429,040.28 | \$230,185.96 | | \$659,226.24 |

LEA : 103027503 Plum Borough SD

Printed 11/27/2024 11:14:19 AM

General Fund (10)

| | | | | |
|--|-------------------|------------------|----------------|--------------|
| 2260 Instruction and Curriculum Development Services | <u>Elementary</u> | <u>Secondary</u> | <u>Federal</u> | <u>Total</u> |
| 100 <u>Personnel Services – Salaries</u> | | | | |
| 100 Personnel Services – Salaries | 68,890.83 | 68,890.83 | 5,372.59 | 143,154.25 |
| Total Personnel Services – Salaries | \$68,890.83 | \$68,890.83 | \$5,372.59 | \$143,154.25 |
| 200 <u>Personnel Services – Employee Benefits</u> | | | | |
| 210 Group Insurance – Contracted Provider | 14,203.38 | 14,203.38 | | 28,406.76 |
| 220 Social Security Contributions | 5,316.84 | 5,316.84 | | 10,633.68 |
| 230 PSERS Retirement Contributions | 23,889.69 | 23,889.69 | | 47,779.38 |
| 260 Workers' Compensation | 293.12 | 293.12 | | 586.24 |
| Total Personnel Services – Employee Benefits | \$43,703.03 | \$43,703.03 | | \$87,406.06 |
| 300 <u>Purchased Professional and Technical Services</u> | | | | |
| 330 Other Professional Services | 19,105.13 | 19,105.12 | | 38,210.25 |
| Total Purchased Professional and Technical Services | \$19,105.13 | \$19,105.12 | | \$38,210.25 |
| 500 <u>Other Purchased Services</u> | | | | |
| 530 Communications | 62.07 | 62.07 | | 124.14 |
| Total Other Purchased Services | \$62.07 | \$62.07 | | \$124.14 |
| 600 <u>Supplies</u> | | | | |
| 630 Food | 202.21 | 202.21 | | 404.42 |
| Total Supplies | \$202.21 | \$202.21 | | \$404.42 |
| Total 2260 Instruction and Curriculum Development Services | \$131,963.27 | \$131,963.26 | \$5,372.59 | \$269,299.12 |

LEA : 103027503 Plum Borough SD

Printed 11/27/2024 11:14:19 AM

General Fund (10)

| 2270 Instructional Staff Professional Development Services | Elementary | Secondary | Federal | Total |
|--|-------------|-------------|---------|-------------|
| 100 <u>Personnel Services – Salaries</u> | | | | |
| 100 Personnel Services – Salaries | | 4,840.00 | | 4,840.00 |
| Total Personnel Services – Salaries | | \$4,840.00 | | \$4,840.00 |
| 200 <u>Personnel Services – Employee Benefits</u> | | | | |
| 220 Social Security Contributions | | 348.51 | | 348.51 |
| 230 PSERS Retirement Contributions | | 1,570.80 | | 1,570.80 |
| 240 Tuition Reimbursement | 32,671.16 | 32,671.16 | | 65,342.32 |
| 260 Workers' Compensation | | 19.36 | | 19.36 |
| Total Personnel Services – Employee Benefits | \$32,671.16 | \$34,609.83 | | \$67,280.99 |
| 300 <u>Purchased Professional and Technical Services</u> | | | | |
| 360 Employee Training and Development Services | 6,019.77 | 6,576.67 | | 12,596.44 |
| Total Purchased Professional and Technical Services | \$6,019.77 | \$6,576.67 | | \$12,596.44 |
| 500 <u>Other Purchased Services</u> | | | | |
| 580 Travel | 242.26 | 242.26 | | 484.52 |
| Total Other Purchased Services | \$242.26 | \$242.26 | | \$484.52 |
| 800 <u>Other Objects</u> | | | | |
| 810 Dues and Fees | 387.00 | 387.00 | | 774.00 |
| Total Other Objects | \$387.00 | \$387.00 | | \$774.00 |
| Total 2270 Instructional Staff Professional Development Services | \$39,320.19 | \$46,655.76 | | \$85,975.95 |

LEA : 103027503 Plum Borough SD

Printed 11/27/2024 11:14:19 AM

General Fund (10)

| 2300 Support Services – Administration | Elementary | Secondary | Federal | Total |
|--|---------------------|-----------------------|---------|-----------------------|
| 100 Personnel Services – Salaries | | | | |
| 100 Personnel Services – Salaries | 524,187.46 | 701,290.89 | | 1,955,898.38 |
| Total Personnel Services – Salaries | \$524,187.46 | \$701,290.89 | | \$1,955,898.38 |
| 200 Personnel Services – Employee Benefits | | | | |
| 210 Group Insurance – Contracted Provider | 64,782.90 | 115,494.30 | | 294,632.46 |
| 220 Social Security Contributions | 39,277.65 | 52,145.92 | | 142,738.60 |
| 230 PSERS Retirement Contributions | 172,734.15 | 210,866.83 | | 590,656.56 |
| 260 Workers' Compensation | 2,127.89 | 2,847.70 | | 7,927.51 |
| 280 Other Post-Employment Benefits (OPEB) | 6.75 | 6.75 | | 40.02 |
| Total Personnel Services – Employee Benefits | \$278,929.34 | \$381,361.50 | | \$1,035,995.15 |
| 300 Purchased Professional and Technical Services | | | | |
| 322 Professional Educational Services – lus | | | | 6,600.00 |
| 329 Professional Educational Services – Other | 7,760.85 | 7,760.85 | | 15,521.70 |
| 330 Other Professional Services | | | | 198,428.92 |
| Total Purchased Professional and Technical Services | \$7,760.85 | \$7,760.85 | | \$220,550.62 |
| 400 Purchased Property Services | | | | |
| 430 Repairs and Maintenance Services | | | | 1,500.00 |
| Total Purchased Property Services | | | | \$1,500.00 |
| 500 Other Purchased Services | | | | |
| 520 Insurance – General | | | | 334.00 |
| 530 Communications | 450.00 | 18,513.28 | | 36,596.78 |
| 580 Travel | 73.88 | 118.00 | | 13,931.90 |
| Total Other Purchased Services | \$523.88 | \$18,631.28 | | \$50,862.68 |
| 600 Supplies | | | | |
| 610 General Supplies | 2,004.41 | 2,535.71 | | 80,346.70 |
| 630 Food | 1,725.69 | 4,732.51 | | 14,621.88 |
| 650 Supplies & Fees – Technology Related | | | | 3,739.25 |
| Total Supplies | \$3,730.10 | \$7,268.22 | | \$98,707.83 |
| 800 Other Objects | | | | |
| 810 Dues and Fees | 1,260.00 | 1,359.00 | | 13,908.49 |
| 820 Claims and Judgments Against the LEA | | | | 12,000.00 |
| Total Other Objects | \$1,260.00 | \$1,359.00 | | \$25,908.49 |
| Total 2300 Support Services – Administration | \$816,391.63 | \$1,117,671.74 | | \$3,389,423.15 |

LEA : 103027503 Plum Borough SD

Printed 11/27/2024 11:14:19 AM

| | | | | |
|--|-------------------|------------------|----------------|--------------|
| General Fund (10) | | | | |
| 2310 Board Services | <u>Elementary</u> | <u>Secondary</u> | <u>Federal</u> | <u>Total</u> |
| 300 <u>Purchased Professional and Technical Services</u> | | | | |
| 330 Other Professional Services | | | | 52,963.30 |
| Total Purchased Professional and Technical Services | | | | \$52,963.30 |
| 500 <u>Other Purchased Services</u> | | | | |
| 520 Insurance – General | | | | 334.00 |
| 530 Communications | | | | 17,633.50 |
| 580 Travel | | | | 1,098.47 |
| Total Other Purchased Services | | | | \$19,065.97 |
| 600 <u>Supplies</u> | | | | |
| 610 General Supplies | | | | 2,697.67 |
| 630 Food | | | | 252.53 |
| Total Supplies | | | | \$2,950.20 |
| 800 <u>Other Objects</u> | | | | |
| 820 Claims and Judgments Against the LEA | | | | 12,000.00 |
| Total Other Objects | | | | \$12,000.00 |
| Total 2310 Board Services | | | | \$86,979.47 |

LEA : 103027503 Plum Borough SD

Printed 11/27/2024 11:14:19 AM

General Fund (10)

| 2330 Tax Assessment and Collection Services | <u>Elementary</u> | <u>Secondary</u> | <u>Federal</u> | <u>Total</u> |
|---|-------------------|------------------|----------------|--------------|
| 100 <u>Personnel Services – Salaries</u> | | | | |
| 100 Personnel Services – Salaries | | | | 64,613.00 |
| Total Personnel Services – Salaries | | | | \$64,613.00 |
| 200 <u>Personnel Services – Employee Benefits</u> | | | | |
| 220 Social Security Contributions | | | | 4,942.92 |
| 260 Workers’ Compensation | | | | 262.43 |
| Total Personnel Services – Employee Benefits | | | | \$5,205.35 |
| 600 <u>Supplies</u> | | | | |
| 610 General Supplies | | | | 11,434.87 |
| Total Supplies | | | | \$11,434.87 |
| Total 2330 Tax Assessment and Collection Services | | | | \$81,253.22 |

LEA : 103027503 Plum Borough SD

Printed 11/27/2024 11:14:19 AM

General Fund (10)

| 2340 Staff Relations and Negotiations Services | <u>Elementary</u> | <u>Secondary</u> | <u>Federal</u> | <u>Total</u> |
|--|-------------------|------------------|----------------|--------------|
| 200 <u>Personnel Services – Employee Benefits</u> | | | | |
| 280 Other Post-Employment Benefits (OPEB) | | | | 6.12 |
| Total Personnel Services – Employee Benefits | | | | \$6.12 |
| 300 <u>Purchased Professional and Technical Services</u> | | | | |
| 322 Professional Educational Services – Ius | | | | 6,600.00 |
| 330 Other Professional Services | | | | 3,469.50 |
| Total Purchased Professional and Technical Services | | | | \$10,069.50 |
| 500 <u>Other Purchased Services</u> | | | | |
| 580 Travel | | | | 1,434.96 |
| Total Other Purchased Services | | | | \$1,434.96 |
| 600 <u>Supplies</u> | | | | |
| 610 General Supplies | | | | 5,736.05 |
| 630 Food | | | | 3,390.51 |
| 650 Supplies & Fees – Technology Related | | | | 3,739.25 |
| Total Supplies | | | | \$12,865.81 |
| 800 <u>Other Objects</u> | | | | |
| 810 Dues and Fees | | | | 3,684.49 |
| Total Other Objects | | | | \$3,684.49 |
| Total 2340 Staff Relations and Negotiations Services | | | | \$28,060.88 |

LEA : 103027503 Plum Borough SD

Printed 11/27/2024 11:14:19 AM

General Fund (10)

| | | | | |
|--|-------------------|------------------|----------------|--------------|
| 2350 Legal and Accounting Services | <u>Elementary</u> | <u>Secondary</u> | <u>Federal</u> | <u>Total</u> |
| 300 <u>Purchased Professional and Technical Services</u> | | | | |
| 330 Other Professional Services | | | | 90,191.12 |
| Total Purchased Professional and Technical Services | | | | \$90,191.12 |
| Total 2350 Legal and Accounting Services | | | | \$90,191.12 |

LEA : 103027503 Plum Borough SD

Printed 11/27/2024 11:14:19 AM

| | | | | |
|---|-------------------|------------------|----------------|----------------|
| General Fund (10) | | | | |
| 2360 Office of the Superintendent / Executive Director Services | <u>Elementary</u> | <u>Secondary</u> | <u>Federal</u> | <u>Total</u> |
| 100 <u>Personnel Services – Salaries</u> | | | | |
| 100 Personnel Services – Salaries | | | | 665,807.03 |
| Total Personnel Services – Salaries | | | | \$665,807.03 |
| 200 <u>Personnel Services – Employee Benefits</u> | | | | |
| 210 Group Insurance – Contracted Provider | | | | 114,355.26 |
| 220 Social Security Contributions | | | | 46,372.11 |
| 230 PSERS Retirement Contributions | | | | 207,055.58 |
| 260 Workers' Compensation | | | | 2,689.49 |
| 280 Other Post-Employment Benefits (OPEB) | | | | 20.40 |
| Total Personnel Services – Employee Benefits | | | | \$370,492.84 |
| 300 <u>Purchased Professional and Technical Services</u> | | | | |
| 330 Other Professional Services | | | | 51,805.00 |
| Total Purchased Professional and Technical Services | | | | \$51,805.00 |
| 500 <u>Other Purchased Services</u> | | | | |
| 530 Communications | 450.00 | 450.00 | | 900.00 |
| 580 Travel | | | | 11,206.59 |
| Total Other Purchased Services | \$450.00 | \$450.00 | | \$12,106.59 |
| 600 <u>Supplies</u> | | | | |
| 610 General Supplies | | | | 22,319.26 |
| 630 Food | | | | 4,314.29 |
| Total Supplies | | | | \$26,633.55 |
| 800 <u>Other Objects</u> | | | | |
| 810 Dues and Fees | | | | 7,605.00 |
| Total Other Objects | | | | \$7,605.00 |
| Total 2360 Office of the Superintendent / Executive Director Services | \$450.00 | \$450.00 | | \$1,134,450.01 |

LEA : 103027503 Plum Borough SD

Printed 11/27/2024 11:14:19 AM

General Fund (10)

2370 Community Relations Services

Elementary Secondary Federal Total

| | | | | |
|---|--|--|--|-------------|
| 600 <u>Supplies</u> | | | | |
| 610 General Supplies | | | | 13,500.91 |
| 630 Food | | | | 206.35 |
| Total Supplies | | | | \$13,707.26 |
| Total 2370 Community Relations Services | | | | \$13,707.26 |

LEA : 103027503 Plum Borough SD

Printed 11/27/2024 11:14:19 AM

General Fund (10)

| 2380 Office of the Principal Services | Elementary | Secondary | Federal | Total |
|--|--------------|----------------|---------|----------------|
| 100 <u>Personnel Services – Salaries</u> | | | | |
| 100 Personnel Services – Salaries | 524,187.46 | 701,290.89 | | 1,225,478.35 |
| Total Personnel Services – Salaries | \$524,187.46 | \$701,290.89 | | \$1,225,478.35 |
| 200 <u>Personnel Services – Employee Benefits</u> | | | | |
| 210 Group Insurance – Contracted Provider | 64,782.90 | 115,494.30 | | 180,277.20 |
| 220 Social Security Contributions | 39,277.65 | 52,145.92 | | 91,423.57 |
| 230 PSERS Retirement Contributions | 172,734.15 | 210,866.83 | | 383,600.98 |
| 260 Workers' Compensation | 2,127.89 | 2,847.70 | | 4,975.59 |
| 280 Other Post-Employment Benefits (OPEB) | 6.75 | 6.75 | | 13.50 |
| Total Personnel Services – Employee Benefits | \$278,929.34 | \$381,361.50 | | \$660,290.84 |
| 300 <u>Purchased Professional and Technical Services</u> | | | | |
| 329 Professional Educational Services – Other | 7,760.85 | 7,760.85 | | 15,521.70 |
| Total Purchased Professional and Technical Services | \$7,760.85 | \$7,760.85 | | \$15,521.70 |
| 500 <u>Other Purchased Services</u> | | | | |
| 530 Communications | | 18,063.28 | | 18,063.28 |
| 580 Travel | 73.88 | 118.00 | | 191.88 |
| Total Other Purchased Services | \$73.88 | \$18,181.28 | | \$18,255.16 |
| 600 <u>Supplies</u> | | | | |
| 610 General Supplies | 2,004.41 | 2,535.71 | | 4,540.12 |
| 630 Food | 1,725.69 | 4,732.51 | | 6,458.20 |
| Total Supplies | \$3,730.10 | \$7,268.22 | | \$10,998.32 |
| 800 <u>Other Objects</u> | | | | |
| 810 Dues and Fees | 1,260.00 | 1,359.00 | | 2,619.00 |
| Total Other Objects | \$1,260.00 | \$1,359.00 | | \$2,619.00 |
| Total 2380 Office of the Principal Services | \$815,941.63 | \$1,117,221.74 | | \$1,933,163.37 |

LEA : 103027503 Plum Borough SD

Printed 11/27/2024 11:14:19 AM

General Fund (10)

| | | | | |
|--|-------------------|------------------|----------------|--------------|
| 2390 Other Administration Services | <u>Elementary</u> | <u>Secondary</u> | <u>Federal</u> | <u>Total</u> |
| 400 <u>Purchased Property Services</u> | | | | |
| 430 Repairs and Maintenance Services | | | | 1,500.00 |
| Total Purchased Property Services | | | | \$1,500.00 |
| 600 <u>Supplies</u> | | | | |
| 610 General Supplies | | | | 20,117.82 |
| Total Supplies | | | | \$20,117.82 |
| Total 2390 Other Administration Services | | | | \$21,617.82 |

LEA : 103027503 Plum Borough SD

Printed 11/27/2024 11:14:19 AM

General Fund (10)

| 2400 Support Services – Pupil Health | <u>Elementary</u> | <u>Secondary</u> | <u>Federal</u> | <u>Total</u> |
|--|-------------------|------------------|----------------|--------------|
| 100 <u>Personnel Services – Salaries</u> | | | | |
| 100 Personnel Services – Salaries | | | 290,329.17 | 376,953.76 |
| Total Personnel Services – Salaries | | | \$290,329.17 | \$376,953.76 |
| 200 <u>Personnel Services – Employee Benefits</u> | | | | |
| 210 Group Insurance – Contracted Provider | | | 47,319.12 | 47,540.88 |
| 220 Social Security Contributions | | | 22,210.18 | 27,812.42 |
| 230 PSERS Retirement Contributions | | | 39,370.08 | 122,540.81 |
| 260 Workers' Compensation | | | 1,161.32 | 1,507.70 |
| 280 Other Post-Employment Benefits (OPEB) | | | | 4,046.12 |
| Total Personnel Services – Employee Benefits | | | \$110,060.70 | \$203,447.93 |
| 300 <u>Purchased Professional and Technical Services</u> | | | | |
| 329 Professional Educational Services – Other | | | | 38,921.10 |
| 330 Other Professional Services | | | | 15,486.67 |
| Total Purchased Professional and Technical Services | | | | \$54,407.77 |
| 400 <u>Purchased Property Services</u> | | | | |
| 430 Repairs and Maintenance Services | | | | 1,240.00 |
| Total Purchased Property Services | | | | \$1,240.00 |
| 600 <u>Supplies</u> | | | | |
| 610 General Supplies | | | | 27,185.52 |
| Total Supplies | | | | \$27,185.52 |
| 800 <u>Other Objects</u> | | | | |
| 810 Dues and Fees | | | | 130.00 |
| Total Other Objects | | | | \$130.00 |
| Total 2400 Support Services – Pupil Health | | | \$400,389.87 | \$663,364.98 |

LEA : 103027503 Plum Borough SD

Printed 11/27/2024 11:14:19 AM

General Fund (10)

2420 Medical Services

| <u>Elementary</u> | <u>Secondary</u> | <u>Federal</u> | <u>Total</u> |
|-------------------|------------------|----------------|--------------|
|-------------------|------------------|----------------|--------------|

300 Purchased Professional and Technical Services

| | | | | |
|---------------------------------|--|--|--|-----------|
| 330 Other Professional Services | | | | 15,029.95 |
|---------------------------------|--|--|--|-----------|

| | | | | |
|--|--|--|--|--------------------|
| Total Purchased Professional and Technical Services | | | | \$15,029.95 |
|--|--|--|--|--------------------|

| | | | | |
|------------------------------------|--|--|--|--------------------|
| Total 2420 Medical Services | | | | \$15,029.95 |
|------------------------------------|--|--|--|--------------------|

LEA : 103027503 Plum Borough SD

Printed 11/27/2024 11:14:19 AM

General Fund (10)

2430 Dental Services

| <u>Elementary</u> | <u>Secondary</u> | <u>Federal</u> | <u>Total</u> |
|-------------------|------------------|----------------|--------------|
|-------------------|------------------|----------------|--------------|

300 Purchased Professional and Technical Services

| | | | |
|---------------------------------|--|--|--------|
| 330 Other Professional Services | | | 456.72 |
|---------------------------------|--|--|--------|

| | | | |
|--|--|--|-----------------|
| Total Purchased Professional and Technical Services | | | \$456.72 |
|--|--|--|-----------------|

| | | | |
|-----------------------------------|--|--|-----------------|
| Total 2430 Dental Services | | | \$456.72 |
|-----------------------------------|--|--|-----------------|

LEA : 103027503 Plum Borough SD

Printed 11/27/2024 11:14:19 AM

General Fund (10)

2440 Nursing Services

| | <u>Elementary</u> | <u>Secondary</u> | <u>Federal</u> | <u>Total</u> |
|---|-------------------|------------------|---------------------|---------------------|
| 100 <u>Personnel Services – Salaries</u> | | | | |
| 100 Personnel Services – Salaries | | | 290,329.17 | 376,953.76 |
| Total Personnel Services – Salaries | | | \$290,329.17 | \$376,953.76 |
| 200 <u>Personnel Services – Employee Benefits</u> | | | | |
| 210 Group Insurance – Contracted Provider | | | 47,319.12 | 47,540.88 |
| 220 Social Security Contributions | | | 22,210.18 | 27,812.42 |
| 230 PSERS Retirement Contributions | | | 39,370.08 | 122,540.81 |
| 260 Workers' Compensation | | | 1,161.32 | 1,507.70 |
| 280 Other Post-Employment Benefits (OPEB) | | | | 4,046.12 |
| Total Personnel Services – Employee Benefits | | | \$110,060.70 | \$203,447.93 |
| 300 <u>Purchased Professional and Technical Services</u> | | | | |
| 329 Professional Educational Services – Other | | | | 38,921.10 |
| Total Purchased Professional and Technical Services | | | | \$38,921.10 |
| 400 <u>Purchased Property Services</u> | | | | |
| 430 Repairs and Maintenance Services | | | | 1,240.00 |
| Total Purchased Property Services | | | | \$1,240.00 |
| 600 <u>Supplies</u> | | | | |
| 610 General Supplies | | | | 27,185.52 |
| Total Supplies | | | | \$27,185.52 |
| 800 <u>Other Objects</u> | | | | |
| 810 Dues and Fees | | | | 130.00 |
| Total Other Objects | | | | \$130.00 |
| Total 2440 Nursing Services | | | \$400,389.87 | \$647,878.31 |

LEA : 103027503 Plum Borough SD

Printed 11/27/2024 11:14:19 AM

| | | | | |
|--|-------------------|------------------|----------------|--------------|
| General Fund (10) | | | | |
| 2500 Support Services – Business | <u>Elementary</u> | <u>Secondary</u> | <u>Federal</u> | <u>Total</u> |
| 100 <u>Personnel Services – Salaries</u> | | | | |
| 100 Personnel Services – Salaries | | | | 380,070.63 |
| Total Personnel Services – Salaries | | | | \$380,070.63 |
| 200 <u>Personnel Services – Employee Benefits</u> | | | | |
| 210 Group Insurance – Contracted Provider | | | | 61,212.10 |
| 220 Social Security Contributions | | | | 28,429.82 |
| 230 PSERS Retirement Contributions | | | | 121,442.63 |
| 260 Workers' Compensation | | | | 1,541.64 |
| Total Personnel Services – Employee Benefits | | | | \$212,626.19 |
| 300 <u>Purchased Professional and Technical Services</u> | | | | |
| 330 Other Professional Services | | | | 22,287.48 |
| Total Purchased Professional and Technical Services | | | | \$22,287.48 |
| 500 <u>Other Purchased Services</u> | | | | |
| 530 Communications | | | | 300.00 |
| 580 Travel | | | | 481.00 |
| Total Other Purchased Services | | | | \$781.00 |
| 600 <u>Supplies</u> | | | | |
| 610 General Supplies | | | | 19,307.72 |
| 650 Supplies & Fees – Technology Related | | | | 8,000.00 |
| Total Supplies | | | | \$27,307.72 |
| 800 <u>Other Objects</u> | | | | |
| 810 Dues and Fees | | | | 10,248.00 |
| Total Other Objects | | | | \$10,248.00 |
| Total 2500 Support Services – Business | | | | \$653,321.02 |

LEA : 103027503 Plum Borough SD

Printed 11/27/2024 11:14:19 AM

General Fund (10)

2510 Fiscal Services

| | <u>Elementary</u> | <u>Secondary</u> | <u>Federal</u> | <u>Total</u> |
|---|-------------------|------------------|----------------|---------------------|
| 100 <u>Personnel Services – Salaries</u> | | | | |
| 100 Personnel Services – Salaries | | | | 380,070.63 |
| Total Personnel Services – Salaries | | | | \$380,070.63 |
| 200 <u>Personnel Services – Employee Benefits</u> | | | | |
| 210 Group Insurance – Contracted Provider | | | | 61,212.10 |
| 220 Social Security Contributions | | | | 28,429.82 |
| 230 PSERS Retirement Contributions | | | | 121,442.63 |
| 260 Workers' Compensation | | | | 1,541.64 |
| Total Personnel Services – Employee Benefits | | | | \$212,626.19 |
| 300 <u>Purchased Professional and Technical Services</u> | | | | |
| 330 Other Professional Services | | | | 22,287.48 |
| Total Purchased Professional and Technical Services | | | | \$22,287.48 |
| 500 <u>Other Purchased Services</u> | | | | |
| 530 Communications | | | | 300.00 |
| 580 Travel | | | | 481.00 |
| Total Other Purchased Services | | | | \$781.00 |
| 600 <u>Supplies</u> | | | | |
| 610 General Supplies | | | | 19,307.72 |
| 650 Supplies & Fees – Technology Related | | | | 8,000.00 |
| Total Supplies | | | | \$27,307.72 |
| 800 <u>Other Objects</u> | | | | |
| 810 Dues and Fees | | | | 10,248.00 |
| Total Other Objects | | | | \$10,248.00 |
| Total 2510 Fiscal Services | | | | \$653,321.02 |

LEA : 103027503 Plum Borough SD

Printed 11/27/2024 11:14:19 AM

| | | | | |
|---|-------------------|------------------|----------------|--------------|
| General Fund (10) | | | | |
| 2511 Supervision of Fiscal Services - Head of Component | <u>Elementary</u> | <u>Secondary</u> | <u>Federal</u> | <u>Total</u> |
| 100 <u>Personnel Services – Salaries</u> | | | | |
| 100 Personnel Services – Salaries | | | | 170,786.60 |
| Total Personnel Services – Salaries | | | | \$170,786.60 |
| 200 <u>Personnel Services – Employee Benefits</u> | | | | |
| 210 Group Insurance – Contracted Provider | | | | 25,231.07 |
| 220 Social Security Contributions | | | | 12,793.56 |
| 230 PSERS Retirement Contributions | | | | 53,754.00 |
| 260 Workers' Compensation | | | | 692.44 |
| Total Personnel Services – Employee Benefits | | | | \$92,471.07 |
| 300 <u>Purchased Professional and Technical Services</u> | | | | |
| 330 Other Professional Services | | | | 12,672.50 |
| Total Purchased Professional and Technical Services | | | | \$12,672.50 |
| 500 <u>Other Purchased Services</u> | | | | |
| 530 Communications | | | | 300.00 |
| 580 Travel | | | | 481.00 |
| Total Other Purchased Services | | | | \$781.00 |
| 600 <u>Supplies</u> | | | | |
| 610 General Supplies | | | | 19,307.72 |
| 650 Supplies & Fees – Technology Related | | | | 8,000.00 |
| Total Supplies | | | | \$27,307.72 |
| 800 <u>Other Objects</u> | | | | |
| 810 Dues and Fees | | | | 3,578.00 |
| Total Other Objects | | | | \$3,578.00 |
| Total 2511 Supervision of Fiscal Services - Head of Component | | | | \$307,596.89 |

LEA : 103027503 Plum Borough SD

Printed 11/27/2024 11:14:19 AM

General Fund (10)

| 2513 Receiving and Disbursing Funds Services | <u>Elementary</u> | <u>Secondary</u> | <u>Federal</u> | <u>Total</u> |
|--|-------------------|------------------|----------------|--------------|
| 100 <u>Personnel Services – Salaries</u> | | | | |
| 100 Personnel Services – Salaries | | | | 50,661.08 |
| Total Personnel Services – Salaries | | | | \$50,661.08 |
| 200 <u>Personnel Services – Employee Benefits</u> | | | | |
| 210 Group Insurance – Contracted Provider | | | | 23,296.92 |
| 220 Social Security Contributions | | | | 3,582.51 |
| 230 PSERS Retirement Contributions | | | | 17,224.71 |
| 260 Workers' Compensation | | | | 205.73 |
| Total Personnel Services – Employee Benefits | | | | \$44,309.87 |
| Total 2513 Receiving and Disbursing Funds Services | | | | \$94,970.95 |

LEA : 103027503 Plum Borough SD

Printed 11/27/2024 11:14:19 AM

General Fund (10)

| 2514 Payroll Services | <u>Elementary</u> | <u>Secondary</u> | <u>Federal</u> | <u>Total</u> |
|--|-------------------|------------------|----------------|--------------|
| 100 <u>Personnel Services – Salaries</u> | | | | |
| 100 Personnel Services – Salaries | | | | 63,296.76 |
| Total Personnel Services – Salaries | | | | \$63,296.76 |
| 200 <u>Personnel Services – Employee Benefits</u> | | | | |
| 210 Group Insurance – Contracted Provider | | | | 1,832.30 |
| 220 Social Security Contributions | | | | 4,858.14 |
| 230 PSERS Retirement Contributions | | | | 19,786.92 |
| 260 Workers' Compensation | | | | 256.65 |
| Total Personnel Services – Employee Benefits | | | | \$26,734.01 |
| 300 <u>Purchased Professional and Technical Services</u> | | | | |
| 330 Other Professional Services | | | | 9,614.98 |
| Total Purchased Professional and Technical Services | | | | \$9,614.98 |
| Total 2514 Payroll Services | | | | \$99,645.75 |

LEA : 103027503 Plum Borough SD

Printed 11/27/2024 11:14:19 AM

General Fund (10)

| | | | | |
|---|-------------------|------------------|----------------|--------------|
| 2515 Financial Accounting Services | <u>Elementary</u> | <u>Secondary</u> | <u>Federal</u> | <u>Total</u> |
| 100 <u>Personnel Services – Salaries</u> | | | | |
| 100 Personnel Services – Salaries | | | | 95,326.19 |
| Total Personnel Services – Salaries | | | | \$95,326.19 |
| 200 <u>Personnel Services – Employee Benefits</u> | | | | |
| 210 Group Insurance – Contracted Provider | | | | 10,851.81 |
| 220 Social Security Contributions | | | | 7,195.61 |
| 230 PSERS Retirement Contributions | | | | 30,677.00 |
| 260 Workers' Compensation | | | | 386.82 |
| Total Personnel Services – Employee Benefits | | | | \$49,111.24 |
| Total 2515 Financial Accounting Services | | | | \$144,437.43 |

LEA : 103027503 Plum Borough SD

Printed 11/27/2024 11:14:19 AM

| | | | | |
|----------------------------------|-------------------|------------------|----------------|--------------|
| General Fund (10) | | | | |
| 2519 Other Fiscal Services | <u>Elementary</u> | <u>Secondary</u> | <u>Federal</u> | <u>Total</u> |
| 800 <u>Other Objects</u> | | | | |
| 810 Dues and Fees | | | | 6,670.00 |
| Total Other Objects | | | | \$6,670.00 |
| Total 2519 Other Fiscal Services | | | | \$6,670.00 |

LEA : 103027503 Plum Borough SD

Printed 11/27/2024 11:14:19 AM

| | | | | |
|--|-------------------|------------------|----------------|----------------|
| General Fund (10) | | | | |
| 2600 Operation and Maintenance of Plant Services | <u>Elementary</u> | <u>Secondary</u> | <u>Federal</u> | <u>Total</u> |
| 100 <u>Personnel Services – Salaries</u> | | | | |
| 100 Personnel Services – Salaries | | | | 2,099,945.03 |
| Total Personnel Services – Salaries | | | | \$2,099,945.03 |
| 200 <u>Personnel Services – Employee Benefits</u> | | | | |
| 210 Group Insurance – Contracted Provider | | | | 375,626.70 |
| 220 Social Security Contributions | | | | 154,665.13 |
| 230 PSERS Retirement Contributions | | | | 688,820.34 |
| 260 Workers' Compensation | | | | 8,455.67 |
| 280 Other Post-Employment Benefits (OPEB) | | | | 162.90 |
| Total Personnel Services – Employee Benefits | | | | \$1,227,730.74 |
| 300 <u>Purchased Professional and Technical Services</u> | | | | |
| 330 Other Professional Services | | | | 5,862.34 |
| Total Purchased Professional and Technical Services | | | | \$5,862.34 |
| 400 <u>Purchased Property Services</u> | | | | |
| 410 Cleaning Services | | | | 139,656.75 |
| 420 Utility Services | | | | 135,581.70 |
| 430 Repairs and Maintenance Services | | | | 654,771.69 |
| 440 Rentals | | | | 4,915.33 |
| Total Purchased Property Services | | | | \$934,925.47 |
| 500 <u>Other Purchased Services</u> | | | | |
| 523 General Property and Liability Insurance | | | | 166,306.50 |
| 529 Other Insurance | | | | 24,916.13 |
| 580 Travel | | | | 1,625.07 |
| Total Other Purchased Services | | | | \$192,847.70 |
| 600 <u>Supplies</u> | | | | |
| 610 General Supplies | 166,173.36 | 378,165.95 | | 544,339.31 |
| 620 Energy | | | | 864,076.74 |
| 630 Food | | | | 321.95 |
| 650 Supplies & Fees – Technology Related | | | | 6,003.37 |
| Total Supplies | \$166,173.36 | \$378,165.95 | | \$1,414,741.37 |
| 700 <u>Property</u> | | | | |
| 762 Capitalized Equipment - Replacement | | | | 109,882.83 |
| Total Property | | | | \$109,882.83 |
| 800 <u>Other Objects</u> | | | | |
| 810 Dues and Fees | | | | 2,884.00 |
| Total Other Objects | | | | \$2,884.00 |
| Total 2600 Operation and Maintenance of Plant Services | \$166,173.36 | \$378,165.95 | | \$5,988,819.48 |

LEA : 103027503 Plum Borough SD

Printed 11/27/2024 11:14:19 AM

General Fund (10)

| | | | | |
|---|-------------------|------------------|----------------|--------------|
| 2610 Supervision of Operation and Maintenance of Plant Services | <u>Elementary</u> | <u>Secondary</u> | <u>Federal</u> | <u>Total</u> |
| 100 <u>Personnel Services – Salaries</u> | | | | |
| 100 Personnel Services – Salaries | | | | 144,733.06 |
| Total Personnel Services – Salaries | | | | \$144,733.06 |
| 200 <u>Personnel Services – Employee Benefits</u> | | | | |
| 210 Group Insurance – Contracted Provider | | | | 11,970.04 |
| 220 Social Security Contributions | | | | 10,891.53 |
| 230 PSERS Retirement Contributions | | | | 43,713.40 |
| 260 Workers' Compensation | | | | 583.85 |
| Total Personnel Services – Employee Benefits | | | | \$67,158.82 |
| Total 2610 Supervision of Operation and Maintenance of Plant Services | | | | \$211,891.88 |

LEA : 103027503 Plum Borough SD

Printed 11/27/2024 11:14:19 AM

General Fund (10)

| 2611 Supervision of Operation and Maintenance of Plant Services – Head of Component | <u>Elementary</u> | <u>Secondary</u> | <u>Federal</u> | <u>Total</u> |
|---|-------------------|------------------|----------------|--------------|
| 100 <u>Personnel Services – Salaries</u> | | | | |
| 100 Personnel Services – Salaries | | | | 82,321.83 |
| Total Personnel Services – Salaries | | | | \$82,321.83 |
| 200 <u>Personnel Services – Employee Benefits</u> | | | | |
| 210 Group Insurance – Contracted Provider | | | | 7,370.30 |
| 220 Social Security Contributions | | | | 6,267.07 |
| 230 PSERS Retirement Contributions | | | | 24,176.60 |
| 260 Workers' Compensation | | | | 338.24 |
| Total Personnel Services – Employee Benefits | | | | \$38,152.21 |
| Total 2611 Supervision of Operation and Maintenance of Plant Services – Head of Component | | | | \$120,474.04 |

LEA : 103027503 Plum Borough SD

Printed 11/27/2024 11:14:19 AM

General Fund (10)

| 2619 Supervision of Operation and Maintenance of Plant Services – All Other Supervision | <u>Elementary</u> | <u>Secondary</u> | <u>Federal</u> | <u>Total</u> |
|---|-------------------|------------------|----------------|--------------|
| 100 <u>Personnel Services – Salaries</u> | | | | |
| 100 Personnel Services – Salaries | | | | 62,411.23 |
| Total Personnel Services – Salaries | | | | \$62,411.23 |
| 200 <u>Personnel Services – Employee Benefits</u> | | | | |
| 210 Group Insurance – Contracted Provider | | | | 4,599.74 |
| 220 Social Security Contributions | | | | 4,624.46 |
| 230 PSERS Retirement Contributions | | | | 19,536.80 |
| 260 Workers' Compensation | | | | 245.61 |
| Total Personnel Services – Employee Benefits | | | | \$29,006.61 |
| Total 2619 Supervision of Operation and Maintenance of Plant Services – All Other Supervision | | | | \$91,417.84 |

LEA : 103027503 Plum Borough SD

Printed 11/27/2024 11:14:19 AM

General Fund (10)

| 2620 Operation of Buildings Services | Elementary | Secondary | Federal | Total |
|---|--------------|--------------|---------|----------------|
| 100 <u>Personnel Services – Salaries</u> | | | | |
| 100 Personnel Services – Salaries | | | | 1,577,486.19 |
| Total Personnel Services – Salaries | | | | \$1,577,486.19 |
| 200 <u>Personnel Services – Employee Benefits</u> | | | | |
| 210 Group Insurance – Contracted Provider | | | | 361,374.66 |
| 220 Social Security Contributions | | | | 114,863.75 |
| 230 PSERS Retirement Contributions | | | | 516,680.04 |
| 260 Workers' Compensation | | | | 6,353.87 |
| 280 Other Post-Employment Benefits (OPEB) | | | | 162.90 |
| Total Personnel Services – Employee Benefits | | | | \$999,435.22 |
| 400 <u>Purchased Property Services</u> | | | | |
| 410 Cleaning Services | | | | 48,371.15 |
| 420 Utility Services | | | | 135,581.70 |
| 430 Repairs and Maintenance Services | | | | 621,619.43 |
| 440 Rentals | | | | 4,915.33 |
| Total Purchased Property Services | | | | \$810,487.61 |
| 500 <u>Other Purchased Services</u> | | | | |
| 523 General Property and Liability Insurance | | | | 166,306.50 |
| 529 Other Insurance | | | | 24,916.13 |
| 580 Travel | | | | 1,479.95 |
| Total Other Purchased Services | | | | \$192,702.58 |
| 600 <u>Supplies</u> | | | | |
| 610 General Supplies | 126,932.45 | 338,925.04 | | 465,857.49 |
| 620 Energy | | | | 844,600.80 |
| 630 Food | | | | 321.95 |
| 650 Supplies & Fees – Technology Related | | | | 6,003.37 |
| Total Supplies | \$126,932.45 | \$338,925.04 | | \$1,316,783.61 |
| 700 <u>Property</u> | | | | |
| 762 Capitalized Equipment - Replacement | | | | 109,882.83 |
| Total Property | | | | \$109,882.83 |
| 800 <u>Other Objects</u> | | | | |
| 810 Dues and Fees | | | | 1,234.00 |
| Total Other Objects | | | | \$1,234.00 |
| Total 2620 Operation of Buildings Services | \$126,932.45 | \$338,925.04 | | \$5,008,012.04 |

LEA : 103027503 Plum Borough SD

Printed 11/27/2024 11:14:19 AM

General Fund (10)

| | | | | |
|--|-------------------|------------------|----------------|--------------|
| 2630 Care and Upkeep of Grounds Services | <u>Elementary</u> | <u>Secondary</u> | <u>Federal</u> | <u>Total</u> |
| 400 <u>Purchased Property Services</u> | | | | |
| 410 Cleaning Services | | | | 91,285.60 |
| Total Purchased Property Services | | | | \$91,285.60 |
| Total 2630 Care and Upkeep of Grounds Services | | | | \$91,285.60 |

LEA : 103027503 Plum Borough SD

Printed 11/27/2024 11:14:19 AM

General Fund (10)

| | | | | |
|--|-------------------|------------------|----------------|--------------|
| 2640 Care and Upkeep of Equipment Services | <u>Elementary</u> | <u>Secondary</u> | <u>Federal</u> | <u>Total</u> |
| 400 <u>Purchased Property Services</u> | | | | |
| 430 Repairs and Maintenance Services | | | | 25,854.34 |
| Total Purchased Property Services | | | | \$25,854.34 |
| Total 2640 Care and Upkeep of Equipment Services | | | | \$25,854.34 |

LEA : 103027503 Plum Borough SD

Printed 11/27/2024 11:14:19 AM

General Fund (10)

| 2650 Vehicle Operation and Maintenance Services (Other Than Student Transportation Vehicles) | <u>Elementary</u> | <u>Secondary</u> | <u>Federal</u> | <u>Total</u> |
|--|-------------------|------------------|----------------|--------------|
| 400 <u>Purchased Property Services</u> | | | | |
| 430 Repairs and Maintenance Services | | | | 7,297.92 |
| Total Purchased Property Services | | | | \$7,297.92 |
| 600 <u>Supplies</u> | | | | |
| 620 Energy | | | | 19,475.94 |
| Total Supplies | | | | \$19,475.94 |
| Total 2650 Vehicle Operation and Maintenance Services (Other Than Student Transportation Vehicles) | | | | \$26,773.86 |

LEA : 103027503 Plum Borough SD

Printed 11/27/2024 11:14:19 AM

| | | | | |
|--|-------------------|------------------|----------------|--------------|
| General Fund (10) | | | | |
| 2660 Safety and Security Services | <u>Elementary</u> | <u>Secondary</u> | <u>Federal</u> | <u>Total</u> |
| 100 <u>Personnel Services – Salaries</u> | | | | |
| 100 Personnel Services – Salaries | | | | 377,725.78 |
| Total Personnel Services – Salaries | | | | \$377,725.78 |
| 200 <u>Personnel Services – Employee Benefits</u> | | | | |
| 210 Group Insurance – Contracted Provider | | | | 2,282.00 |
| 220 Social Security Contributions | | | | 28,909.85 |
| 230 PSERS Retirement Contributions | | | | 128,426.90 |
| 260 Workers' Compensation | | | | 1,517.95 |
| Total Personnel Services – Employee Benefits | | | | \$161,136.70 |
| 300 <u>Purchased Professional and Technical Services</u> | | | | |
| 330 Other Professional Services | | | | 5,862.34 |
| Total Purchased Professional and Technical Services | | | | \$5,862.34 |
| 500 <u>Other Purchased Services</u> | | | | |
| 580 Travel | | | | 145.12 |
| Total Other Purchased Services | | | | \$145.12 |
| 600 <u>Supplies</u> | | | | |
| 610 General Supplies | 39,240.91 | 39,240.91 | | 78,481.82 |
| Total Supplies | \$39,240.91 | \$39,240.91 | | \$78,481.82 |
| 800 <u>Other Objects</u> | | | | |
| 810 Dues and Fees | | | | 1,650.00 |
| Total Other Objects | | | | \$1,650.00 |
| Total 2660 Safety and Security Services | \$39,240.91 | \$39,240.91 | | \$625,001.76 |

LEA : 103027503 Plum Borough SD

Printed 11/27/2024 11:14:19 AM

General Fund (10)

| 2700 Student Transportation Services | Elementary | Secondary | Federal | Total |
|--|------------|-----------|------------|----------------|
| 100 <u>Personnel Services – Salaries</u> | | | | |
| 100 Personnel Services – Salaries | | | | 1,934,482.89 |
| Total Personnel Services – Salaries | | | | \$1,934,482.89 |
| 200 <u>Personnel Services – Employee Benefits</u> | | | | |
| 210 Group Insurance – Contracted Provider | | | | 150,434.07 |
| 220 Social Security Contributions | | | | 141,038.04 |
| 230 PSERS Retirement Contributions | | | | 623,165.83 |
| 260 Workers' Compensation | | | | 7,693.09 |
| 280 Other Post-Employment Benefits (OPEB) | | | | 16.20 |
| Total Personnel Services – Employee Benefits | | | | \$922,347.23 |
| 300 <u>Purchased Professional and Technical Services</u> | | | | |
| 330 Other Professional Services | | | | 9,936.25 |
| Total Purchased Professional and Technical Services | | | | \$9,936.25 |
| 400 <u>Purchased Property Services</u> | | | | |
| 430 Repairs and Maintenance Services | | | | 29,314.71 |
| 440 Rentals | | | | 27,623.39 |
| Total Purchased Property Services | | | | \$56,938.10 |
| 500 <u>Other Purchased Services</u> | | | | |
| 516 Student Transportation Services From the IU | | | | 10,933.99 |
| 519 Student Transportation Services From Other Sources | | | | 17,345.66 |
| 522 Automotive Liability Insurance | | | | 57,817.00 |
| 530 Communications | | | | 25,287.26 |
| 580 Travel | | | 5,094.83 | 6,049.13 |
| Total Other Purchased Services | | | \$5,094.83 | \$117,433.04 |
| 600 <u>Supplies</u> | | | | |
| 610 General Supplies | | | | 315,461.80 |
| 620 Energy | | | | 349,840.76 |
| 630 Food | | | | 36.41 |
| 650 Supplies & Fees – Technology Related | | | | 64,244.14 |
| Total Supplies | | | | \$729,583.11 |
| 800 <u>Other Objects</u> | | | | |
| 810 Dues and Fees | | | | 425.00 |
| Total Other Objects | | | | \$425.00 |
| Total 2700 Student Transportation Services | | | \$5,094.83 | \$3,771,145.62 |

LEA : 103027503 Plum Borough SD

Printed 11/27/2024 11:14:19 AM

General Fund (10)

| 2710 Supervision of Student Transportation Services | <u>Elementary</u> | <u>Secondary</u> | <u>Federal</u> | <u>Total</u> |
|---|-------------------|------------------|----------------|--------------|
| 100 <u>Personnel Services – Salaries</u> | | | | |
| 100 Personnel Services – Salaries | | | | 206,966.10 |
| Total Personnel Services – Salaries | | | | \$206,966.10 |
| 200 <u>Personnel Services – Employee Benefits</u> | | | | |
| 210 Group Insurance – Contracted Provider | | | | 35,659.81 |
| 220 Social Security Contributions | | | | 14,640.94 |
| 230 PSERS Retirement Contributions | | | | 62,968.07 |
| 260 Workers' Compensation | | | | 797.50 |
| 280 Other Post-Employment Benefits (OPEB) | | | | 10.80 |
| Total Personnel Services – Employee Benefits | | | | \$114,077.12 |
| 500 <u>Other Purchased Services</u> | | | | |
| 580 Travel | | | | 194.61 |
| Total Other Purchased Services | | | | \$194.61 |
| 600 <u>Supplies</u> | | | | |
| 630 Food | | | | 36.41 |
| Total Supplies | | | | \$36.41 |
| Total 2710 Supervision of Student Transportation Services | | | | \$321,274.24 |

LEA : 103027503 Plum Borough SD

Printed 11/27/2024 11:14:19 AM

General Fund (10)

| 2711 Supervision of Student Transportation Services – Head of Component | <u>Elementary</u> | <u>Secondary</u> | <u>Federal</u> | <u>Total</u> |
|---|-------------------|------------------|----------------|--------------|
| 100 <u>Personnel Services – Salaries</u> | | | | |
| 100 Personnel Services – Salaries | | | | 148,771.89 |
| Total Personnel Services – Salaries | | | | \$148,771.89 |
| 200 <u>Personnel Services – Employee Benefits</u> | | | | |
| 210 Group Insurance – Contracted Provider | | | | 14,540.70 |
| 220 Social Security Contributions | | | | 10,431.19 |
| 230 PSERS Retirement Contributions | | | | 43,852.85 |
| 260 Workers' Compensation | | | | 561.54 |
| 280 Other Post-Employment Benefits (OPEB) | | | | 10.80 |
| Total Personnel Services – Employee Benefits | | | | \$69,397.08 |
| 500 <u>Other Purchased Services</u> | | | | |
| 580 Travel | | | | 194.61 |
| Total Other Purchased Services | | | | \$194.61 |
| 600 <u>Supplies</u> | | | | |
| 630 Food | | | | 36.41 |
| Total Supplies | | | | \$36.41 |
| Total 2711 Supervision of Student Transportation Services – Head of Component | | | | \$218,399.99 |

LEA : 103027503 Plum Borough SD

Printed 11/27/2024 11:14:19 AM

General Fund (10)

| | | | | |
|---|-------------------|------------------|----------------|--------------|
| 2719 Supervision of Student Transportation Services – All Other Supervision | <u>Elementary</u> | <u>Secondary</u> | <u>Federal</u> | <u>Total</u> |
| 100 <u>Personnel Services – Salaries</u> | | | | |
| 100 Personnel Services – Salaries | | | | 58,194.21 |
| Total Personnel Services – Salaries | | | | \$58,194.21 |
| 200 <u>Personnel Services – Employee Benefits</u> | | | | |
| 210 Group Insurance – Contracted Provider | | | | 21,119.11 |
| 220 Social Security Contributions | | | | 4,209.75 |
| 230 PSERS Retirement Contributions | | | | 19,115.22 |
| 260 Workers' Compensation | | | | 235.96 |
| Total Personnel Services – Employee Benefits | | | | \$44,680.04 |
| Total 2719 Supervision of Student Transportation Services – All Other Supervision | | | | \$102,874.25 |

LEA : 103027503 Plum Borough SD

Printed 11/27/2024 11:14:19 AM

General Fund (10)

| | | | | |
|---|-------------------|------------------|----------------|----------------|
| 2720 Vehicle Operation Services | <u>Elementary</u> | <u>Secondary</u> | <u>Federal</u> | <u>Total</u> |
| 100 <u>Personnel Services – Salaries</u> | | | | |
| 100 Personnel Services – Salaries | | | | 814,197.29 |
| Total Personnel Services – Salaries | | | | \$814,197.29 |
| 200 <u>Personnel Services – Employee Benefits</u> | | | | |
| 210 Group Insurance – Contracted Provider | | | | 36,410.98 |
| 220 Social Security Contributions | | | | 59,494.20 |
| 230 PSERS Retirement Contributions | | | | 262,167.21 |
| 260 Workers' Compensation | | | | 3,243.62 |
| Total Personnel Services – Employee Benefits | | | | \$361,316.01 |
| 400 <u>Purchased Property Services</u> | | | | |
| 440 Rentals | | | | 27,623.39 |
| Total Purchased Property Services | | | | \$27,623.39 |
| 500 <u>Other Purchased Services</u> | | | | |
| 580 Travel | | | 5,094.83 | 5,094.83 |
| Total Other Purchased Services | | | \$5,094.83 | \$5,094.83 |
| 600 <u>Supplies</u> | | | | |
| 650 Supplies & Fees – Technology Related | | | | 64,244.14 |
| Total Supplies | | | | \$64,244.14 |
| Total 2720 Vehicle Operation Services | | | \$5,094.83 | \$1,272,475.66 |

LEA : 103027503 Plum Borough SD

Printed 11/27/2024 11:14:19 AM

| | | | | |
|--|-------------------|------------------|----------------|----------------|
| General Fund (10) | | | | |
| 2740 Vehicle Servicing and Maintenance Services | <u>Elementary</u> | <u>Secondary</u> | <u>Federal</u> | <u>Total</u> |
| 100 <u>Personnel Services – Salaries</u> | | | | |
| 100 Personnel Services – Salaries | | | | 219,185.39 |
| Total Personnel Services – Salaries | | | | \$219,185.39 |
| 200 <u>Personnel Services – Employee Benefits</u> | | | | |
| 210 Group Insurance – Contracted Provider | | | | 47,092.80 |
| 220 Social Security Contributions | | | | 16,181.83 |
| 230 PSERS Retirement Contributions | | | | 74,523.05 |
| 260 Workers' Compensation | | | | 886.67 |
| 280 Other Post-Employment Benefits (OPEB) | | | | 5.40 |
| Total Personnel Services – Employee Benefits | | | | \$138,689.75 |
| 300 <u>Purchased Professional and Technical Services</u> | | | | |
| 330 Other Professional Services | | | | 9,936.25 |
| Total Purchased Professional and Technical Services | | | | \$9,936.25 |
| 400 <u>Purchased Property Services</u> | | | | |
| 430 Repairs and Maintenance Services | | | | 29,314.71 |
| Total Purchased Property Services | | | | \$29,314.71 |
| 500 <u>Other Purchased Services</u> | | | | |
| 522 Automotive Liability Insurance | | | | 57,817.00 |
| 530 Communications | | | | 25,287.26 |
| 580 Travel | | | | 759.69 |
| Total Other Purchased Services | | | | \$83,863.95 |
| 600 <u>Supplies</u> | | | | |
| 610 General Supplies | | | | 315,461.80 |
| 620 Energy | | | | 349,840.76 |
| Total Supplies | | | | \$665,302.56 |
| 800 <u>Other Objects</u> | | | | |
| 810 Dues and Fees | | | | 425.00 |
| Total Other Objects | | | | \$425.00 |
| Total 2740 Vehicle Servicing and Maintenance Services | | | | \$1,146,717.61 |

LEA : 103027503 Plum Borough SD

Printed 11/27/2024 11:14:19 AM

General Fund (10)

| | | | | |
|---|-------------------|------------------|----------------|----------------|
| 2750 Nonpublic Transportation | <u>Elementary</u> | <u>Secondary</u> | <u>Federal</u> | <u>Total</u> |
| 100 <u>Personnel Services – Salaries</u> | | | | |
| 100 Personnel Services – Salaries | | | | 694,134.11 |
| Total Personnel Services – Salaries | | | | \$694,134.11 |
| 200 <u>Personnel Services – Employee Benefits</u> | | | | |
| 210 Group Insurance – Contracted Provider | | | | 31,270.48 |
| 220 Social Security Contributions | | | | 50,721.07 |
| 230 PSERS Retirement Contributions | | | | 223,507.50 |
| 260 Workers' Compensation | | | | 2,765.30 |
| Total Personnel Services – Employee Benefits | | | | \$308,264.35 |
| Total 2750 Nonpublic Transportation | | | | \$1,002,398.46 |

LEA : 103027503 Plum Borough SD

Printed 11/27/2024 11:14:19 AM

General Fund (10)

| | | | | |
|--|-------------------|------------------|----------------|--------------|
| 2790 Other Student Transportation Services | <u>Elementary</u> | <u>Secondary</u> | <u>Federal</u> | <u>Total</u> |
| 500 <u>Other Purchased Services</u> | | | | |
| 516 Student Transportation Services From the IU | | | | 10,933.99 |
| 519 Student Transportation Services From Other Sources | | | | 17,345.66 |
| Total Other Purchased Services | | | | \$28,279.65 |
| Total 2790 Other Student Transportation Services | | | | \$28,279.65 |

LEA : 103027503 Plum Borough SD

Printed 11/27/2024 11:14:19 AM

General Fund (10)

| 2800 Support Services – Central | <u>Elementary</u> | <u>Secondary</u> | <u>Federal</u> | <u>Total</u> |
|--|-------------------|------------------|----------------|----------------|
| 100 <u>Personnel Services – Salaries</u> | | | | |
| 100 Personnel Services – Salaries | | | | 535,688.34 |
| Total Personnel Services – Salaries | | | | \$535,688.34 |
| 200 <u>Personnel Services – Employee Benefits</u> | | | | |
| 210 Group Insurance – Contracted Provider | | | | 81,863.58 |
| 220 Social Security Contributions | | | | 39,753.11 |
| 230 PSERS Retirement Contributions | | | | 170,774.37 |
| 260 Workers' Compensation | | | | 2,169.35 |
| Total Personnel Services – Employee Benefits | | | | \$294,560.41 |
| 300 <u>Purchased Professional and Technical Services</u> | | | | |
| 330 Other Professional Services | | | | 33,552.00 |
| 340 Technical Services | | | | 352,211.16 |
| 360 Employee Training and Development Services | | | | 7,284.40 |
| Total Purchased Professional and Technical Services | | | | \$393,047.56 |
| 400 <u>Purchased Property Services</u> | | | | |
| 440 Rentals | | | | 29,857.00 |
| Total Purchased Property Services | | | | \$29,857.00 |
| 500 <u>Other Purchased Services</u> | | | | |
| 530 Communications | | | | 103,253.83 |
| 580 Travel | | | | 1,253.71 |
| Total Other Purchased Services | | | | \$104,507.54 |
| 600 <u>Supplies</u> | | | | |
| 610 General Supplies | | | | 250.00 |
| 650 Supplies & Fees – Technology Related | | | | 637,593.84 |
| Total Supplies | | | | \$637,843.84 |
| Total 2800 Support Services – Central | | | | \$1,995,504.69 |

LEA : 103027503 Plum Borough SD

Printed 11/27/2024 11:14:19 AM

| | | | | |
|--|-------------------|------------------|----------------|----------------|
| General Fund (10) | | | | |
| 2810 Planning, Research, Development and Evaluation Services | <u>Elementary</u> | <u>Secondary</u> | <u>Federal</u> | <u>Total</u> |
| 100 <u>Personnel Services – Salaries</u> | | | | |
| 100 Personnel Services – Salaries | | | | 414,747.66 |
| Total Personnel Services – Salaries | | | | \$414,747.66 |
| 200 <u>Personnel Services – Employee Benefits</u> | | | | |
| 210 Group Insurance – Contracted Provider | | | | 50,434.11 |
| 220 Social Security Contributions | | | | 31,112.44 |
| 230 PSERS Retirement Contributions | | | | 131,524.46 |
| 260 Workers' Compensation | | | | 1,678.56 |
| Total Personnel Services – Employee Benefits | | | | \$214,749.57 |
| 300 <u>Purchased Professional and Technical Services</u> | | | | |
| 330 Other Professional Services | | | | 33,552.00 |
| 340 Technical Services | | | | 341,211.16 |
| Total Purchased Professional and Technical Services | | | | \$374,763.16 |
| 400 <u>Purchased Property Services</u> | | | | |
| 440 Rentals | | | | 29,857.00 |
| Total Purchased Property Services | | | | \$29,857.00 |
| 500 <u>Other Purchased Services</u> | | | | |
| 530 Communications | | | | 103,253.83 |
| 580 Travel | | | | 716.43 |
| Total Other Purchased Services | | | | \$103,970.26 |
| 600 <u>Supplies</u> | | | | |
| 650 Supplies & Fees – Technology Related | | | | 637,593.84 |
| Total Supplies | | | | \$637,593.84 |
| Total 2810 Planning, Research, Development and Evaluation Services | | | | \$1,775,681.49 |

LEA : 103027503 Plum Borough SD

Printed 11/27/2024 11:14:19 AM

General Fund (10)

2830 Staff Services

Elementary Secondary Federal Total

| | | | | |
|--|--|--|--|---------------------|
| 100 <u>Personnel Services – Salaries</u> | | | | |
| 100 Personnel Services – Salaries | | | | 120,940.68 |
| Total Personnel Services – Salaries | | | | \$120,940.68 |
| 200 <u>Personnel Services – Employee Benefits</u> | | | | |
| 210 Group Insurance – Contracted Provider | | | | 31,429.47 |
| 220 Social Security Contributions | | | | 8,640.67 |
| 230 PSERS Retirement Contributions | | | | 39,249.91 |
| 260 Workers' Compensation | | | | 490.79 |
| Total Personnel Services – Employee Benefits | | | | \$79,810.84 |
| 300 <u>Purchased Professional and Technical Services</u> | | | | |
| 360 Employee Training and Development Services | | | | 7,284.40 |
| Total Purchased Professional and Technical Services | | | | \$7,284.40 |
| 500 <u>Other Purchased Services</u> | | | | |
| 580 Travel | | | | 537.28 |
| Total Other Purchased Services | | | | \$537.28 |
| 600 <u>Supplies</u> | | | | |
| 610 General Supplies | | | | 250.00 |
| Total Supplies | | | | \$250.00 |
| Total 2830 Staff Services | | | | \$208,823.20 |

LEA : 103027503 Plum Borough SD

Printed 11/27/2024 11:14:19 AM

General Fund (10)

| | | | | |
|---|-------------------|------------------|----------------|--------------|
| 2832 Recruitment and Placement Services | <u>Elementary</u> | <u>Secondary</u> | <u>Federal</u> | <u>Total</u> |
| 600 <u>Supplies</u> | | | | |
| 610 General Supplies | | | | 250.00 |
| Total Supplies | | | | \$250.00 |
| Total 2832 Recruitment and Placement Services | | | | \$250.00 |

LEA : 103027503 Plum Borough SD

Printed 11/27/2024 11:14:19 AM

General Fund (10)

| | | | | |
|---|-------------------|------------------|----------------|--------------|
| 2836 Staff Development Services – Non-Instructional, Non-Certified Staff Only | <u>Elementary</u> | <u>Secondary</u> | <u>Federal</u> | <u>Total</u> |
| 300 <u>Purchased Professional and Technical Services</u> | | | | |
| 360 Employee Training and Development Services | | | | 7,284.40 |
| Total Purchased Professional and Technical Services | | | | \$7,284.40 |
| 500 <u>Other Purchased Services</u> | | | | |
| 580 Travel | | | | 537.28 |
| Total Other Purchased Services | | | | \$537.28 |
| Total 2836 Staff Development Services – Non-Instructional, Non-Certified Staff Only | | | | \$7,821.68 |

LEA : 103027503 Plum Borough SD

Printed 11/27/2024 11:14:19 AM

General Fund (10)

| 2839 Other Staff Services | <u>Elementary</u> | <u>Secondary</u> | <u>Federal</u> | <u>Total</u> |
|---|-------------------|------------------|----------------|--------------|
| 100 <u>Personnel Services – Salaries</u> | | | | |
| 100 Personnel Services – Salaries | | | | 120,940.68 |
| Total Personnel Services – Salaries | | | | \$120,940.68 |
| 200 <u>Personnel Services – Employee Benefits</u> | | | | |
| 210 Group Insurance – Contracted Provider | | | | 31,429.47 |
| 220 Social Security Contributions | | | | 8,640.67 |
| 230 PSERS Retirement Contributions | | | | 39,249.91 |
| 260 Workers' Compensation | | | | 490.79 |
| Total Personnel Services – Employee Benefits | | | | \$79,810.84 |
| Total 2839 Other Staff Services | | | | \$200,751.52 |

LEA : 103027503 Plum Borough SD

Printed 11/27/2024 11:14:19 AM

General Fund (10)

2840 Data Processing Services

| <u>Elementary</u> | <u>Secondary</u> | <u>Federal</u> | <u>Total</u> |
|-------------------|------------------|----------------|--------------|
|-------------------|------------------|----------------|--------------|

300 Purchased Professional and Technical Services

| | | | | |
|------------------------|--|--|--|-----------|
| 340 Technical Services | | | | 11,000.00 |
|------------------------|--|--|--|-----------|

| | | | | |
|---|--|--|--|-------------|
| Total Purchased Professional and Technical Services | | | | \$11,000.00 |
|---|--|--|--|-------------|

| | | | | |
|-------------------------------------|--|--|--|-------------|
| Total 2840 Data Processing Services | | | | \$11,000.00 |
|-------------------------------------|--|--|--|-------------|

LEA : 103027503 Plum Borough SD

Printed 11/27/2024 11:14:19 AM

General Fund (10)

| | | | | |
|---|-------------------|------------------|----------------|--------------|
| 2900 Other Support Services | <u>Elementary</u> | <u>Secondary</u> | <u>Federal</u> | <u>Total</u> |
| 200 <u>Personnel Services – Employee Benefits</u> | | | | |
| 280 Other Post-Employment Benefits (OPEB) | | | | 320.30 |
| Total Personnel Services – Employee Benefits | | | | \$320.30 |
| 500 <u>Other Purchased Services</u> | | | | |
| 595 IU Payments By Withholding | | | | 45,410.00 |
| Total Other Purchased Services | | | | \$45,410.00 |
| Total 2900 Other Support Services | | | | \$45,730.30 |

LEA : 103027503 Plum Borough SD

Printed 11/27/2024 11:14:19 AM

General Fund (10)

| | | | | |
|---|-------------------|------------------|----------------|--------------|
| 2910 Support Services Not Listed Elsewhere In the 2000 Series | <u>Elementary</u> | <u>Secondary</u> | <u>Federal</u> | <u>Total</u> |
| 200 <u>Personnel Services – Employee Benefits</u> | | | | |
| 280 Other Post-Employment Benefits (OPEB) | | | | 320.30 |
| Total Personnel Services – Employee Benefits | | | | \$320.30 |
| 500 <u>Other Purchased Services</u> | | | | |
| 595 IU Payments By Withholding | | | | 45,410.00 |
| Total Other Purchased Services | | | | \$45,410.00 |
| Total 2910 Support Services Not Listed Elsewhere In the 2000 Series | | | | \$45,730.30 |

LEA : 103027503 Plum Borough SD

Printed 11/27/2024 11:14:33 AM

| | |
|---|-----------------------|
| General Fund (10) | |
| 3000 Operation of Non-Instructional Services | <u>Total</u> |
| 100 <u>Personnel Services – Salaries</u> | |
| 100 Personnel Services – Salaries | 918,584.47 |
| Total Personnel Services – Salaries | \$918,584.47 |
| 200 <u>Personnel Services – Employee Benefits</u> | |
| 210 Group Insurance – Contracted Provider | 66,195.59 |
| 220 Social Security Contributions | 68,758.37 |
| 230 PSERS Retirement Contributions | 295,948.85 |
| 260 Workers' Compensation | 3,706.16 |
| 280 Other Post-Employment Benefits (OPEB) | 4.05 |
| Total Personnel Services – Employee Benefits | \$434,613.02 |
| 300 <u>Purchased Professional and Technical Services</u> | |
| 330 Other Professional Services | 168,341.52 |
| Total Purchased Professional and Technical Services | \$168,341.52 |
| 400 <u>Purchased Property Services</u> | |
| 410 Cleaning Services | 5,681.50 |
| 430 Repairs and Maintenance Services | 30,509.60 |
| 440 Rentals | 4,589.00 |
| Total Purchased Property Services | \$40,780.10 |
| 500 <u>Other Purchased Services</u> | |
| 520 Insurance – General | 14,334.00 |
| 580 Travel | 21,591.51 |
| Total Other Purchased Services | \$35,925.51 |
| 600 <u>Supplies</u> | |
| 610 General Supplies | 185,082.90 |
| 620 Energy | 3,035.68 |
| 630 Food | 3,726.90 |
| 650 Supplies & Fees – Technology Related | 25,184.00 |
| Total Supplies | \$217,029.48 |
| 800 <u>Other Objects</u> | |
| 810 Dues and Fees | 34,621.86 |
| 890 Miscellaneous Expenditures | 8,000.00 |
| Total Other Objects | \$42,621.86 |
| Total 3000 Operation of Non-Instructional Services | \$1,857,895.96 |

LEA : 103027503 Plum Borough SD

Printed 11/27/2024 11:14:33 AM

General Fund (10)

3200 Student Activities

| | <u>Elementary</u> | <u>Secondary</u> | <u>Federal</u> | <u>Total</u> |
|---|-------------------|------------------|-------------------|-----------------------|
| 100 <u>Personnel Services – Salaries</u> | | | | |
| 100 Personnel Services – Salaries | | | 2,940.59 | 732,451.39 |
| Total Personnel Services – Salaries | | | \$2,940.59 | \$732,451.39 |
| 200 <u>Personnel Services – Employee Benefits</u> | | | | |
| 210 Group Insurance – Contracted Provider | | | | 62,955.59 |
| 220 Social Security Contributions | | | | 54,721.16 |
| 230 PSERS Retirement Contributions | | | | 236,607.46 |
| 260 Workers' Compensation | | | | 2,961.56 |
| 280 Other Post-Employment Benefits (OPEB) | | | | 4.05 |
| Total Personnel Services – Employee Benefits | | | | \$357,249.82 |
| 300 <u>Purchased Professional and Technical Services</u> | | | | |
| 330 Other Professional Services | | | | 157,719.83 |
| Total Purchased Professional and Technical Services | | | | \$157,719.83 |
| 400 <u>Purchased Property Services</u> | | | | |
| 410 Cleaning Services | | | | 5,681.50 |
| 430 Repairs and Maintenance Services | | | | 30,509.60 |
| 440 Rentals | | | | 4,589.00 |
| Total Purchased Property Services | | | | \$40,780.10 |
| 500 <u>Other Purchased Services</u> | | | | |
| 520 Insurance – General | | | | 14,334.00 |
| 580 Travel | | | | 21,591.51 |
| Total Other Purchased Services | | | | \$35,925.51 |
| 600 <u>Supplies</u> | | | | |
| 610 General Supplies | | | | 185,082.90 |
| 620 Energy | | | | 3,035.68 |
| 630 Food | | | | 3,726.90 |
| 650 Supplies & Fees – Technology Related | | | | 25,184.00 |
| Total Supplies | | | | \$217,029.48 |
| 800 <u>Other Objects</u> | | | | |
| 810 Dues and Fees | | | | 34,621.86 |
| 890 Miscellaneous Expenditures | | | | 8,000.00 |
| Total Other Objects | | | | \$42,621.86 |
| Total 3200 Student Activities | | | \$2,940.59 | \$1,583,777.99 |

LEA : 103027503 Plum Borough SD

Printed 11/27/2024 11:14:33 AM

General Fund (10)

| 3300 Community Services | <u>Elementary</u> | <u>Secondary</u> | <u>Federal</u> | <u>Total</u> |
|--|-------------------|------------------|----------------|--------------|
| 100 <u>Personnel Services – Salaries</u> | | | | |
| 100 Personnel Services – Salaries | | | 71,780.68 | 186,133.08 |
| Total Personnel Services – Salaries | | | \$71,780.68 | \$186,133.08 |
| 200 <u>Personnel Services – Employee Benefits</u> | | | | |
| 210 Group Insurance – Contracted Provider | | | | 3,240.00 |
| 220 Social Security Contributions | | | | 14,037.21 |
| 230 PSERS Retirement Contributions | | | | 59,341.39 |
| 260 Workers' Compensation | | | | 744.60 |
| Total Personnel Services – Employee Benefits | | | | \$77,363.20 |
| 300 <u>Purchased Professional and Technical Services</u> | | | | |
| 330 Other Professional Services | | | | 10,621.69 |
| Total Purchased Professional and Technical Services | | | | \$10,621.69 |
| Total 3300 Community Services | | | \$71,780.68 | \$274,117.97 |

LEA : 103027503 Plum Borough SD

Printed 11/27/2024 11:14:43 AM

General Fund (10)

| 5000 Other Expenditures and Financing Uses | | <u>Total</u> |
|--|--|-----------------|
| 800 <u>Other Objects</u> | | |
| 830 Interest | | 2,988,262.77 |
| 880 Refunds of Prior Years' Receipts | | 205,458.07 |
| Total Other Objects | | \$3,193,720.84 |
| 900 <u>Other Uses of Funds</u> | | |
| 910 Redemption of Principal | | 5,180,000.00 |
| 939 Other Fund Transfers | | 2,400,000.00 |
| Total Other Uses of Funds | | \$7,580,000.00 |
| Total 5000 Other Expenditures and Financing Uses | | \$10,773,720.84 |

LEA : 103027503 Plum Borough SD

Printed 11/27/2024 11:14:43 AM

General Fund (10)

| 5100 Debt Service / Other Expenditures and Financing Uses | <u>Elementary</u> | <u>Secondary</u> | <u>Federal</u> | <u>Total</u> |
|---|-------------------|------------------|----------------|----------------|
| 800 <u>Other Objects</u> | | | | |
| 830 Interest | | | | 2,988,262.77 |
| 880 Refunds of Prior Years' Receipts | | | | 205,458.07 |
| Total Other Objects | | | | \$3,193,720.84 |
| 900 <u>Other Uses of Funds</u> | | | | |
| 910 Redemption of Principal | | | | 5,180,000.00 |
| Total Other Uses of Funds | | | | \$5,180,000.00 |
| Total 5100 Debt Service / Other Expenditures and Financing Uses | | | | \$8,373,720.84 |

LEA : 103027503 Plum Borough SD

Printed 11/27/2024 11:14:43 AM

General Fund (10)

| | | | | |
|--------------------------------|-------------------|------------------|----------------|----------------|
| 5110 Debt Service | <u>Elementary</u> | <u>Secondary</u> | <u>Federal</u> | <u>Total</u> |
| 800 <u>Other Objects</u> | | | | |
| 830 Interest | | | | 2,988,262.77 |
| Total Other Objects | | | | \$2,988,262.77 |
| 900 <u>Other Uses of Funds</u> | | | | |
| 910 Redemption of Principal | | | | 5,180,000.00 |
| Total Other Uses of Funds | | | | \$5,180,000.00 |
| Total 5110 Debt Service | | | | \$8,168,262.77 |

LEA : 103027503 Plum Borough SD

Printed 11/27/2024 11:14:43 AM

General Fund (10)

| | | | | |
|---|-------------------|------------------|----------------|--------------|
| 5130 Refund of Prior Year Revenues / Receipts | <u>Elementary</u> | <u>Secondary</u> | <u>Federal</u> | <u>Total</u> |
| 800 <u>Other Objects</u> | | | | |
| 880 Refunds of Prior Years' Receipts | | | | 205,458.07 |
| Total Other Objects | | | | \$205,458.07 |
| Total 5130 Refund of Prior Year Revenues / Receipts | | | | \$205,458.07 |

LEA : 103027503 Plum Borough SD

Printed 11/27/2024 11:14:43 AM

General Fund (10)

| | | | | |
|--------------------------------------|-------------------|------------------|----------------|----------------|
| 5200 Interfund Transfers – Out | <u>Elementary</u> | <u>Secondary</u> | <u>Federal</u> | <u>Total</u> |
| 900 <u>Other Uses of Funds</u> | | | | |
| 939 Other Fund Transfers | | | | 2,400,000.00 |
| Total Other Uses of Funds | | | | \$2,400,000.00 |
| Total 5200 Interfund Transfers – Out | | | | \$2,400,000.00 |

LEA : 103027503 Plum Borough SD

Printed 11/27/2024 11:14:43 AM

General Fund (10)

| | | | | |
|--|-------------------|------------------|----------------|----------------|
| 5230 Capital Projects Fund Transfers | <u>Elementary</u> | <u>Secondary</u> | <u>Federal</u> | <u>Total</u> |
| 900 <u>Other Uses of Funds</u> | | | | |
| 939 Other Fund Transfers | | | | 2,400,000.00 |
| Total Other Uses of Funds | | | | \$2,400,000.00 |
| Total 5230 Capital Projects Fund Transfers | | | | \$2,400,000.00 |

LEA : 103027503 Plum Borough SD

Printed 11/27/2024 11:14:25 AM

Other Capital Projects Fund (39)

2000 Support Services

Total

| | |
|---|----------------|
| 600 <u>Supplies</u> | |
| 650 Supplies & Fees – Technology Related | 70,830.00 |
| Total Supplies | \$70,830.00 |
| 700 <u>Property</u> | |
| 752 Capital Equipment – Original and Additional | 1,021,140.20 |
| Total Property | \$1,021,140.20 |
| Total 2000 Support Services | \$1,091,970.20 |

LEA : 103027503 Plum Borough SD

Printed 11/27/2024 11:14:25 AM

Other Capital Projects Fund (39)

| | | | | |
|--|-------------------|------------------|----------------|--------------|
| 2600 Operation and Maintenance of Plant Services | <u>Elementary</u> | <u>Secondary</u> | <u>Federal</u> | <u>Total</u> |
| 700 <u>Property</u> | | | | |
| 752 Capital Equipment – Original and Additional | | | | 56,586.20 |
| Total Property | | | | \$56,586.20 |
| Total 2600 Operation and Maintenance of Plant Services | | | | \$56,586.20 |

LEA : 103027503 Plum Borough SD

Printed 11/27/2024 11:14:25 AM

Other Capital Projects Fund (39)

| 2650 Vehicle Operation and Maintenance Services (Other Than Student Transportation Vehicles) | <u>Elementary</u> | <u>Secondary</u> | <u>Federal</u> | <u>Total</u> |
|--|-------------------|------------------|----------------|--------------|
| 700 <u>Property</u> | | | | |
| 752 Capital Equipment – Original and Additional | | | | 56,586.20 |
| Total Property | | | | \$56,586.20 |
| Total 2650 Vehicle Operation and Maintenance Services (Other Than Student Transportation Vehicles) | | | | \$56,586.20 |

LEA : 103027503 Plum Borough SD

Printed 11/27/2024 11:14:25 AM

Other Capital Projects Fund (39)

| 2700 Student Transportation Services | <u>Elementary</u> | <u>Secondary</u> | <u>Federal</u> | <u>Total</u> |
|---|-------------------|------------------|----------------|----------------|
| 600 <u>Supplies</u> | | | | |
| 650 Supplies & Fees – Technology Related | | | | 70,830.00 |
| Total Supplies | | | | \$70,830.00 |
| 700 <u>Property</u> | | | | |
| 752 Capital Equipment – Original and Additional | | | | 964,554.00 |
| Total Property | | | | \$964,554.00 |
| Total 2700 Student Transportation Services | | | | \$1,035,384.00 |

LEA : 103027503 Plum Borough SD

Printed 11/27/2024 11:14:25 AM

Other Capital Projects Fund (39)

| 2740 Vehicle Servicing and Maintenance Services | <u>Elementary</u> | <u>Secondary</u> | <u>Federal</u> | <u>Total</u> |
|---|-------------------|------------------|----------------|----------------|
| 600 <u>Supplies</u> | | | | |
| 650 Supplies & Fees – Technology Related | | | | 70,830.00 |
| Total Supplies | | | | \$70,830.00 |
| 700 <u>Property</u> | | | | |
| 752 Capital Equipment – Original and Additional | | | | 964,554.00 |
| Total Property | | | | \$964,554.00 |
| Total 2740 Vehicle Servicing and Maintenance Services | | | | \$1,035,384.00 |

LEA : 103027503 Plum Borough SD

Printed 11/27/2024 11:14:40 AM

Other Capital Projects Fund (39)

4000 Facilities Acquisition, Construction and Improvement Services

Total

300 Purchased Professional and Technical Services

| | |
|---------------------------------|-----------|
| 330 Other Professional Services | 20,981.22 |
|---------------------------------|-----------|

| | |
|---|-------------|
| Total Purchased Professional and Technical Services | \$20,981.22 |
|---|-------------|

700 Property

| | |
|---|------------|
| 762 Capitalized Equipment - Replacement | 313,719.85 |
|---|------------|

| | |
|----------------|--------------|
| Total Property | \$313,719.85 |
|----------------|--------------|

| | |
|--|--------------|
| Total 4000 Facilities Acquisition, Construction and Improvement Services | \$334,701.07 |
|--|--------------|

LEA : 103027503 Plum Borough SD

Printed 11/27/2024 11:14:40 AM

Other Capital Projects Fund (39)

| | | | | |
|---|-------------------|------------------|----------------|--------------|
| 4300 Architecture and Engineering Services / Educational Specifications Development – Original and Additional | <u>Elementary</u> | <u>Secondary</u> | <u>Federal</u> | <u>Total</u> |
| 300 <u>Purchased Professional and Technical Services</u> | | | | |
| 330 Other Professional Services | | | | 20,981.22 |
| Total Purchased Professional and Technical Services | | | | \$20,981.22 |
| Total 4300 Architecture and Engineering Services / Educational Specifications Development – Original and Additional | | | | \$20,981.22 |

LEA : 103027503 Plum Borough SD

Printed 11/27/2024 11:14:40 AM

Other Capital Projects Fund (39)

4600 Existing Building Improvement Services

Elementary

Secondary

Federal

Total

700 Property

762 Capitalized Equipment - Replacement

313,719.85

| | | | | |
|---|--|--|--|--------------|
| Total Property | | | | \$313,719.85 |
| Total 4600 Existing Building Improvement Services | | | | \$313,719.85 |

LEA : 103027503 Plum Borough SD

Printed 11/27/2024 11:14:47 AM

| | <u>General Fund(10)</u> | <u>Student Sponsored Activity Fund(21)</u> | <u>Public Purpose Trust(27)</u> | <u>Other Compt Approved (28)</u> | <u>Athletic / Activity(29)</u> |
|--|-------------------------|--|---------------------------------|--------------------------------------|--------------------------------|
| 1000 <u>Instruction</u> | | | | | |
| 1100 Regular Programs - Elementary / Secondary | 30,365,953.11 | | | | |
| 1200 Special Programs - Elementary / Secondary | 7,851,403.82 | | | | |
| 1300 Vocational Education | 799,332.03 | | | | |
| 1400 Other Instructional Programs - Elementary / Secondary | 30,015.61 | | | | |
| 1500 Nonpublic School Programs | 30,342.42 | | | | |
| Total Instruction | \$39,077,046.99 | | | | |
| 2000 <u>Support Services</u> | | | | | |
| 2100 Support Services - Students | 2,250,528.61 | | | | |
| 2200 Support Services - Instructional Staff | 1,191,333.55 | | | | |
| 2300 Support Services - Administration | 3,389,423.15 | | | | |
| 2400 Support Services - Pupil Health | 663,364.98 | | | | |
| 2500 Support Services - Business | 653,321.02 | | | | |
| 2600 Operation and Maintenance of Plant Services | 5,988,819.48 | | | | |
| 2700 Student Transportation Services | 3,771,145.62 | | | | |
| 2800 Support Services - Central | 1,995,504.69 | | | | |
| 2900 Other Support Services | 45,730.30 | | | | |
| Total Support Services | \$19,949,171.40 | | | | |
| 3000 <u>Operation of Non-Instructional Services</u> | | | | | |
| 3200 Student Activities | 1,583,777.99 | | | | |
| 3300 Community Services | 274,117.97 | | | | |
| Total Operation of Non-Instructional Services | \$1,857,895.96 | | | | |
| 4000 <u>Facilities Acquisition, Construction and Improvement Services</u> | | | | | |
| 4300 Architecture and Engineering Services / Educational Specifications Development - Original and Additional | | | | | |
| 4600 Existing Building Improvement Services | | | | | |
| Total Facilities Acquisition, Construction and Improvement Services | | | | | |
| 5000 <u>Other Expenditures and Financing Uses</u> | | | | | |
| 5100 Debt Service / Other Expenditures and Financing Uses | 8,373,720.84 | | | | |
| 5200 Interfund Transfers - Out | 2,400,000.00 | | | | |
| Total Other Expenditures and Financing Uses | \$10,773,720.84 | | | | |
| TOTAL ACTUAL EXPENDITURES & OTHER FINANCING USES | \$71,657,835.19 | | | | |

LEA : 103027503 Plum Borough SD

Printed 11/27/2024 11:14:47 AM

| | <u>Capital Reserve (690.1850)(31)</u> | <u>Capital Reserve (1431)(32)</u> | <u>Other Capital Projects Fund(39)</u> | <u>Debt Service(40)</u> | <u>Permanent(90)</u> |
|---|---------------------------------------|-----------------------------------|--|-------------------------|----------------------|
| 1000 Instruction | | | | | |
| 1100 Regular Programs - Elementary / Secondary | | | | | |
| 1200 Special Programs - Elementary / Secondary | | | | | |
| 1300 Vocational Education | | | | | |
| 1400 Other Instructional Programs - Elementary / Secondary | | | | | |
| 1500 Nonpublic School Programs | | | | | |
| Total Instruction | | | | | |
| 2000 Support Services | | | | | |
| 2100 Support Services - Students | | | | | |
| 2200 Support Services - Instructional Staff | | | | | |
| 2300 Support Services - Administration | | | | | |
| 2400 Support Services - Pupil Health | | | | | |
| 2500 Support Services - Business | | | | | |
| 2600 Operation and Maintenance of Plant Services | | | 56,586.20 | | |
| 2700 Student Transportation Services | | | 1,035,384.00 | | |
| 2800 Support Services - Central | | | | | |
| 2900 Other Support Services | | | | | |
| Total Support Services | | | \$1,091,970.20 | | |
| 3000 Operation of Non-Instructional Services | | | | | |
| 3200 Student Activities | | | | | |
| 3300 Community Services | | | | | |
| Total Operation of Non-Instructional Services | | | | | |
| 4000 Facilities Acquisition, Construction and Improvement Services | | | | | |
| 4300 Architecture and Engineering Services / Educational Specifications Development - Original and Additional | | | 20,981.22 | | |
| 4600 Existing Building Improvement Services | | | 313,719.85 | | |
| Total Facilities Acquisition, Construction and Improvement Services | | | \$334,701.07 | | |
| 5000 Other Expenditures and Financing Uses | | | | | |
| 5100 Debt Service / Other Expenditures and Financing Uses | | | | | |
| 5200 Interfund Transfers - Out | | | | | |
| Total Other Expenditures and Financing Uses | | | | | |
| TOTAL ACTUAL EXPENDITURES & OTHER FINANCING USES | | | \$1,426,671.27 | | |

LEA : 103027503 Plum Borough SD

Printed 11/27/2024 11:14:47 AM

| | <u>Total</u> |
|---|------------------------|
| 1000 <u>Instruction</u> | |
| 1100 Regular Programs - Elementary / Secondary | 30,365,953.11 |
| 1200 Special Programs - Elementary / Secondary | 7,851,403.82 |
| 1300 Vocational Education | 799,332.03 |
| 1400 Other Instructional Programs - Elementary / Secondary | 30,015.61 |
| 1500 Nonpublic School Programs | 30,342.42 |
| Total Instruction | \$39,077,046.99 |
| 2000 <u>Support Services</u> | |
| 2100 Support Services - Students | 2,250,528.61 |
| 2200 Support Services - Instructional Staff | 1,191,333.55 |
| 2300 Support Services - Administration | 3,389,423.15 |
| 2400 Support Services - Pupil Health | 663,364.98 |
| 2500 Support Services - Business | 653,321.02 |
| 2600 Operation and Maintenance of Plant Services | 6,045,405.68 |
| 2700 Student Transportation Services | 4,806,529.62 |
| 2800 Support Services - Central | 1,995,504.69 |
| 2900 Other Support Services | 45,730.30 |
| Total Support Services | \$21,041,141.60 |
| 3000 <u>Operation of Non-Instructional Services</u> | |
| 3200 Student Activities | 1,583,777.99 |
| 3300 Community Services | 274,117.97 |
| Total Operation of Non-Instructional Services | \$1,857,895.96 |
| 4000 <u>Facilities Acquisition, Construction and Improvement Services</u> | |
| 4300 Architecture and Engineering Services / Educational Specifications Development - Original and Additional | 20,981.22 |
| 4600 Existing Building Improvement Services | 313,719.85 |
| Total Facilities Acquisition, Construction and Improvement Services | \$334,701.07 |
| 5000 <u>Other Expenditures and Financing Uses</u> | |
| 5100 Debt Service / Other Expenditures and Financing Uses | 8,373,720.84 |
| 5200 Interfund Transfers - Out | 2,400,000.00 |
| Total Other Expenditures and Financing Uses | \$10,773,720.84 |
| TOTAL ACTUAL EXPENDITURES & OTHER FINANCING USES | \$73,084,506.46 |

LEA : 103027503 Plum Borough SD

Printed 11/27/2024 11:14:56 AM

PSERS Salary Data (Salary Data should relate to the General Fund only)

| Amount | Description | Amount |
|--------|--|---------------|
| | Total Salary Base for salaries subject to PSERS withholding | 30,432,159.56 |
| | Total Federally Funded salaries subject to PSERS withholding | 1,263,014.71 |
| | | |

Title I Expenditure Data

| Amount | Description | Amount |
|--------|---|--------------|
| | Expenditures Funded with Current Title I Funds | 388,588.16 |
| | Expenditures Funded with Carry over Title I Funds | 8,669.86 |
| | | |
| Total | Title I Expenditure Data | \$397,258.02 |

Title IV Revenue Data

| Amount | Description | Amount |
|--------|---|----------|
| | Revenue from Title IV-A-1: Student Support and Academic Enrichment Grants | 5,345.96 |
| | | |

LEA : 103027503 Plum Borough SD

| | | |
|-----|---|--------------|
| 1 . | <u>Current Special Education Expenditures within Function 1000</u> See list of exclusions in the note below. | 9,120,281.94 |
| 2 . | <u>Current Special Education Expenditures within Function 2000</u> See list of exclusions in the note below. | 3,431,260.23 |
| 2A. | <u>Current Special Education Expenditures within Sub-Function 2100</u> This data should also be included in line 2 above. See list of exclusions in the note below. | 413,860.63 |
| 2B. | <u>Current Special Education Expenditures within Sub-Function 2200</u> This data should also be included in line 2 above. See list of exclusions in the note below. | 219,080.11 |
| 2C. | <u>Current Special Education Expenditures within Sub-Function 2700</u> This data should also be included in line 2 above. See list of exclusions in the note below. | 1,247,335.45 |
| 3. | <u>Current Special Education Expenditures within Sub-Function 3100</u> See list of exclusions in the note below. | |
| 4. | <u>Current Special Education Expenditures within Sub-Function 3200</u> See list of exclusions in the note below. | 291,248.62 |

Note: The Current Special Education Expenditure amounts for each line should be calculated as follows:

- * Include the total expenditures for special education costs from all governmental funds and the food service fund 51 for the function/sub-function requested
- * Exclude data from sub-functions: 1243,1450,1500,1600,1807,2280,2450,2750,2990
- * Exclude data from objects: 322,511,512,516,561,562,564,566,592,593,594,595,596,597,700,830,899

Benefits for Staff Relative to Collective Bargaining Agreements

| | OBJECT | COVERED | NOT COVERED | TOTAL |
|--------------------------|--|----------------|--------------|----------------|
| 10 General Fund | No Self Insurance data to report | | | |
| | 211 Medical Insurance | 3,906,020.98 | 560,013.60 | 4,466,034.58 |
| | 212 Dental Insurance | 274,858.86 | 32,788.92 | 307,647.78 |
| | 215 Eye Care Insurance | 42,032.03 | 4,959.36 | 46,991.39 |
| | 216 Prescription Insurance | | | |
| | 271 Self-Insurance Medical Benefits | | | |
| | 272 Self-Insurance Dental Benefits | | | |
| | 275 Self-Insurance Eye Care Benefits | | | |
| | 276 Self-Insurance Prescription Benefits | | | |
| | FUND TOTAL | \$4,222,911.87 | \$597,761.88 | \$4,820,673.75 |
| 50 Enterprise Fund | No Self Insurance data to report | | | |
| | 211 Medical Insurance | | | |
| | 212 Dental Insurance | | | |
| | 215 Eye Care Insurance | | | |
| | 216 Prescription Insurance | | | |
| | 271 Self-Insurance Medical Benefits | | | |
| | 272 Self-Insurance Dental Benefits | | | |
| | 275 Self-Insurance Eye Care Benefits | | | |
| | 276 Self-Insurance Prescription Benefits | | | |
| | FUND TOTAL | | | |
| 60 Internal Service Fund | No Self Insurance data to report | | | |
| | 211 Medical Insurance | | | |
| | 212 Dental Insurance | | | |
| | 215 Eye Care Insurance | | | |
| | 216 Prescription Insurance | | | |
| | 271 Self-Insurance Medical Benefits | | | |
| | 272 Self-Insurance Dental Benefits | | | |
| | 275 Self-Insurance Eye Care Benefits | | | |
| | 276 Self-Insurance Prescription Benefits | | | |
| | FUND TOTAL | | | |
| Total of All Funds | | \$4,222,911.87 | \$597,761.88 | \$4,820,673.75 |

LEA : 103027503 Plum Borough SD

Printed 11/27/2024 11:15:05 AM

| Function | Special Education (Prior Year) | Nonspecial Education (Prior Year) | Total (Prior Year) | Special Education (Current Year) | Nonspecial Education (Current Year) | Total (Current Year) |
|--|-----------------------------------|--------------------------------------|--------------------|-------------------------------------|--|----------------------|
| 2120 Guidance Services | 705,494.88 | 705,494.88 | 1,410,989.76 | 727,976.21 | 727,976.21 | 1,455,952.42 |
| 2140 Psychological Services | 343,524.95 | | 343,524.95 | 347,317.58 | | 347,317.58 |
| 2150 Speech Pathology and Audiology Services | | | | | | |
| 2160 Social Work Services | 153,381.97 | 153,381.97 | 306,763.94 | 149,986.21 | 149,986.21 | 299,972.42 |
| 2260 Instruction and Curriculum Development Services | 255,241.73 | | 255,241.73 | 269,299.12 | | 269,299.12 |
| 2350 Legal and Accounting Services | 26,110.70 | 60,924.96 | 87,035.66 | 27,057.34 | 63,133.78 | 90,191.12 |
| 2420 Medical Services | 8,375.00 | 8,375.00 | 16,750.00 | 7,514.98 | 7,514.97 | 15,029.95 |
| 2440 Nursing Services | 332,033.17 | 332,033.17 | 664,066.34 | 323,939.16 | 323,939.15 | 647,878.31 |
| 2700 Student Transportation Services | 854,441.34 | 2,860,521.00 | 3,714,962.34 | 856,473.14 | 2,867,323.12 | 3,723,796.26 |
| Total | \$2,678,603.74 | \$4,120,730.98 | \$6,799,334.72 | \$2,709,563.74 | \$4,139,873.44 | \$6,849,437.18 |

LEA : 103027503 Plum Borough SD

| (PRINCIPAL AMOUNTS ONLY) | | | | | | | | |
|---|-------------------------|--------------------------------------|-----------------------------------|---|--|-------------------------------------|-------------------------------------|----------------|
| <u>GOVERNMENTAL FUNDS/ ACTIVITIES</u> | Short-Term Borrowing | General Obligation Bonds/Notes | Authority Building Obligations | Leases, Other Right to Use Arrangements | Extended Term Financing Agreements | Other Long Term Debt/Liabilities | OPEB, Comp Abs, Net Pension Liab | Total |
| 1. Debt at Beginning of Fiscal Year | | 98,685,000.00 | | | | | 106,895,468.00 | 205,580,468.00 |
| 2. Additional Debt Incurred During Year | | | | | | | 59,719.00 | 59,719.00 |
| 3. Retirements and Repayments | | 5,180,000.00 | | | | | 2,134,579.00 | 7,314,579.00 |
| 4. Debt at End of Fiscal Year | | 93,505,000.00 | | | | | 104,820,608.00 | 198,325,608.00 |
| 5. Accreted Interest at End Of Fiscal Year | | | | | | | | |
| 6. Total Debt and Accreted Interest | | 93,505,000.00 | | | | | 104,820,608.00 | 198,325,608.00 |
| 7. Current Portion P&I - Due within 1 year | | 8,177,729.00 | | | | | | 8,177,729.00 |
| 8. Interest Paid during current fiscal year | | 2,988,264.00 | | | | | | 2,988,264.00 |

| (PRINCIPAL AMOUNTS ONLY) | | | | | | | | |
|---|-------------------------|--------------------------------------|-----------------------------------|---|--|-------------------------------------|-------------------------------------|--------------|
| <u>PROPRIETARY FUNDS</u> | Short-Term Borrowing | General Obligation Bonds/Notes | Authority Building Obligations | Leases, Other Right to Use Arrangements | Extended Term Financing Agreements | Other Long Term Debt/Liabilities | OPEB, Comp Abs, Net Pension Liab | Total |
| 1. Debt at Beginning of Fiscal Year | | | | | | | 1,926,156.00 | 1,926,156.00 |
| 2. Additional Debt Incurred During Year | | | | | | | 3,098.00 | 3,098.00 |
| 3. Retirements and Repayments | | | | | | | 47,096.00 | 47,096.00 |
| 4. Debt at End of Fiscal Year | | | | | | | 1,882,158.00 | 1,882,158.00 |
| 5. Accreted Interest at End Of Fiscal Year | | | | | | | | |
| 6. Total Debt and Accreted Interest | | | | | | | 1,882,158.00 | 1,882,158.00 |
| 7. Current Portion P&I - Due within 1 year | | | | | | | | |
| 8. Interest Paid during current fiscal year | | | | | | | | |

LEA : 103027503 Plum Borough SD

Total Principal and Interest Payments Made by Your School - All Funds

| Function | Fund | | Principal (910) | Principal (920) | Interest (830) | Total (Principal +Interest) | Misc Other Uses (990) |
|--|------|------------------------|-----------------|-----------------|----------------|-----------------------------|-----------------------|
| 5110 | 10 | General Fund | 5,180,000.00 | | 2,988,262.77 | 8,168,262.77 | |
| 5110 | 20 | Special Revenue Funds | | | | | |
| 5110 | 30 | Capital Projects Funds | | | | | |
| 5110 | 40 | Debt Service Fund | | | | | |
| 5110 | 90 | Permanent Fund | | | | | |
| 5120 | 10 | General Fund | | | | | |
| 5120 | 20 | Special Revenue Funds | | | | | |
| 5120 | 30 | Capital Projects Funds | | | | | |
| 5120 | 40 | Debt Service Fund | | | | | |
| 5140 | 10 | General Fund | | | | | |
| 5140 | 20 | Special Revenue Funds | | | | | |
| 5140 | 30 | Capital Projects Funds | | | | | |
| 5140 | 40 | Debt Service Fund | | | | | |
| 5140 | 90 | Permanent Fund | | | | | |
| Total Debt Payments - Governmental Funds | | | \$5,180,000.00 | | \$2,988,262.77 | \$8,168,262.77 | |

| Function | Fund | | Principal (910) | Principal (920) | Interest (830) | Total (Principal +Interest) |
|---|------|-----------------------|-----------------|-----------------|----------------|-----------------------------|
| 5110 | 50 | Enterprise Fund | | | | |
| 5110 | 60 | Internal Service Fund | | | | |
| 5120 | 50 | Enterprise Fund | | | | |
| 5120 | 60 | Internal Service Fund | | | | |
| 5140 | 50 | Enterprise Fund | | | | |
| 5140 | 60 | Internal Service Fund | | | | |
| Total Debt Payments - Proprietary Funds | | | | | | |

LEA : 103027503 Plum Borough SD

Debt Details
Governmental Funds/ Activities

| Debt Category | Debt Issue Date (MM/YYYY) | Principal Amounts Only | | | | Current Portion Due Within One Year (Principal and Interest) | Interest Paid During Fiscal Year |
|---------------------------------------|------------------------------|----------------------------------|-------------|-------------------------|----------------------------|--|----------------------------------|
| | | Debt at Beginning of Fiscal Year | Additions | Reductions / Repayments | Debt at End of Fiscal Year | | |
| General Obligation Bonds/Notes – CIB | 08/2020 | 14,485,000.00 | | 315,000.00 | 14,170,000.00 | 709,447.00 | 389,095.00 |
| General Obligation Bonds/Notes – CIB | 01/2020 | 5,665,000.00 | | 510,000.00 | 5,155,000.00 | 627,643.00 | 124,430.00 |
| General Obligation Bonds/Notes – CIB | 01/2020 | 18,470,000.00 | | 85,000.00 | 18,385,000.00 | 637,109.00 | 554,668.00 |
| General Obligation Bonds/Notes – CIB | 01/2020 | 21,630,000.00 | | 210,000.00 | 21,420,000.00 | 830,470.00 | 616,455.00 |
| General Obligation Bonds/Notes – CIB | 06/2017 | 2,290,000.00 | | 60,000.00 | 2,230,000.00 | 170,137.00 | 102,924.00 |
| General Obligation Bonds/Notes – CIB | 06/2017 | 2,570,000.00 | | 90,000.00 | 2,480,000.00 | 172,383.00 | 74,489.00 |
| General Obligation Bonds/Notes – CIB | 10/2016 | 2,555,000.00 | | 475,000.00 | 2,080,000.00 | 560,633.00 | 87,574.00 |
| General Obligation Bonds/Notes – CIB | 10/2016 | 905,000.00 | | 220,000.00 | 685,000.00 | 233,700.00 | 18,430.00 |
| General Obligation Bonds/Notes – CIB | 06/2013 | 4,835,000.00 | | 470,000.00 | 4,365,000.00 | 624,288.00 | 152,530.00 |
| General Obligation Bonds/Notes – CIB | 06/2013 | 25,280,000.00 | | 2,745,000.00 | 22,535,000.00 | 3,611,919.00 | 867,669.00 |
| Other Post-Employment Benefits (OPEB) | | 19,937,781.00 | | 141,579.00 | 19,796,202.00 | | |
| Net Pension Liability | | 85,786,000.00 | | 1,993,000.00 | 83,793,000.00 | | |
| Compensated Absences | | 1,171,687.00 | 59,719.00 | | 1,231,406.00 | | |
| Totals for Debt Entered: | | \$205,580,468.00 | \$59,719.00 | \$7,314,579.00 | \$198,325,608.00 | \$8,177,729.00 | \$2,988,264.00 |

Bond Details
Proprietary Funds

| Debt Category | Debt Issue Date (MM/YYYY) | Principal Amounts Only | | | | Current Portion Due Within One Year (Principal and Interest) | Interest Paid During Fiscal Year |
|---------------------------------------|------------------------------|----------------------------------|------------|-------------------------|----------------------------|--|----------------------------------|
| | | Debt at Beginning of Fiscal Year | Additions | Reductions / Repayments | Debt at End of Fiscal Year | | |
| Other Post-Employment Benefits (OPEB) | | 77,096.00 | | 4,096.00 | 73,000.00 | | |
| Net Pension Liability | | 1,842,000.00 | | 43,000.00 | 1,799,000.00 | | |
| Compensated Absences | | 7,060.00 | 3,098.00 | | 10,158.00 | | |
| Totals for Debt Entered: | | \$1,926,156.00 | \$3,098.00 | \$47,096.00 | \$1,882,158.00 | | |

LEA : 103027503 Plum Borough SD

General Fund (10)

| Section 1: Tuition/Purchased Services as Reported within Expenditure Detail | Amount |
|---|----------------|
| Tuition Reported in General Fund Expenditures 1000-560 | 3,592,634.87 |
| Purchased Services in General Fund Expenditures 1000-594 and 1000-597 | |
| Section 1 Total | \$3,592,634.87 |

| Section 2: Tuition Paid to Institution Types During Fiscal Year | Tuition Paid For Nonspecial Education | Tuition Paid For Special Education | Total |
|---|--|---------------------------------------|----------------|
| 1 1306 Institutions | | | |
| 2 Institutionalized Children's Programs | | | |
| 3 Juveniles Incarcerated in Adult Facilities | | | |
| 4 Residential Treatment Facilities | | | |
| 5 Other Local Education Agencies | | 554,447.71 | 554,447.71 |
| 6 Brick and Mortar Charter Schools | 257,098.09 | 80,590.44 | 337,688.53 |
| 7 Cyber Charter Schools | 380,523.83 | 548,635.96 | 929,159.79 |
| 8 Career and Technology Centers | 799,332.03 | | 799,332.03 |
| 9 Approved Private Schools | | 921,378.54 | 921,378.54 |
| 10 PA Chartered Schools for the Deaf and Blind | | | |
| 11 Private Residential Rehabilitative Institutions | | 50,628.27 | 50,628.27 |
| 12 Juvenile Detention Centers | | | |
| 13 Special Program Jointures | | | |
| 14 Other Tuition Not Included Elsewhere In This Section | | | |
| Section 2 Total | \$1,436,953.95 | \$2,155,680.92 | \$3,592,634.87 |

| | | |
|-----|--|-----------|
| 1 . | <u>Student Transportation Services for Educational Field Trips</u> | |
| 2 . | <u>Student Transportation Services for Student Activities</u> | |
| 3 . | <u>Rental of Vehicles for Student Transportation Services</u> | 27,623.39 |
| 4 . | <u>Capital Reserve Funds</u> | |

Include only district-owned transportation expenditures paid from State or local money.
DO NOT include federal expenditures or payments to contract service providers.
Contracted transportation services should not be recorded on this schedule.

LEA : 103027503 Plum Borough SD

Printed 11/27/2024 11:15:18 AM

Food Service / Cafeteria Operations Fund (51)

3000 Operation of Non-Instructional Services

Total

| | | |
|--|---|----------------|
| 100 | <u>Personnel Services – Salaries</u> | |
| 100 | Personnel Services – Salaries | 752,910.48 |
| Total Personnel Services – Salaries | | \$752,910.48 |
| 200 | <u>Personnel Services – Employee Benefits</u> | |
| 210 | Group Insurance – Contracted Provider | 143,756.74 |
| 220 | Social Security Contributions | 30,999.34 |
| 230 | PSERS Retirement Contributions | 232,712.36 |
| 260 | Workers' Compensation | 3,086.56 |
| 299 | All Other Employee Benefits | 3,400.00 |
| Total Personnel Services – Employee Benefits | | \$413,955.00 |
| 400 | <u>Purchased Property Services</u> | |
| 430 | Repairs and Maintenance Services | 68,391.00 |
| 460 | Extermination Services | 630.00 |
| Total Purchased Property Services | | \$69,021.00 |
| 600 | <u>Supplies</u> | |
| 610 | General Supplies | 84,299.80 |
| 630 | Food | 1,186,821.20 |
| Total Supplies | | \$1,271,121.00 |
| 700 | <u>Property</u> | |
| 740 | Depreciation | 22,977.47 |
| Total Property | | \$22,977.47 |
| Total 3000 Operation of Non-Instructional Services | | \$2,529,984.95 |

LEA : 103027503 Plum Borough SD

Printed 11/27/2024 11:15:18 AM

Food Service / Cafeteria Operations Fund (51)

| 3100 Food Services | <u>Elementary</u> | <u>Secondary</u> | <u>Federal</u> | <u>Total</u> |
|---|-------------------|------------------|----------------|----------------|
| 100 <u>Personnel Services – Salaries</u> | | | | |
| 100 Personnel Services – Salaries | | | | 752,910.48 |
| Total Personnel Services – Salaries | | | | \$752,910.48 |
| 200 <u>Personnel Services – Employee Benefits</u> | | | | |
| 210 Group Insurance – Contracted Provider | | | | 143,756.74 |
| 220 Social Security Contributions | | | | 30,999.34 |
| 230 PSERS Retirement Contributions | | | | 232,712.36 |
| 260 Workers' Compensation | | | | 3,086.56 |
| 299 All Other Employee Benefits | | | | 3,400.00 |
| Total Personnel Services – Employee Benefits | | | | \$413,955.00 |
| 400 <u>Purchased Property Services</u> | | | | |
| 430 Repairs and Maintenance Services | | | | 68,391.00 |
| 460 Extermination Services | | | | 630.00 |
| Total Purchased Property Services | | | | \$69,021.00 |
| 600 <u>Supplies</u> | | | | |
| 610 General Supplies | | | | 84,299.80 |
| 630 Food | | | | 1,186,821.20 |
| Total Supplies | | | | \$1,271,121.00 |
| 700 <u>Property</u> | | | | |
| 740 Depreciation | | | | 22,977.47 |
| Total Property | | | | \$22,977.47 |
| Total 3100 Food Services | | | | \$2,529,984.95 |

| | <u>Food Service(51)</u> | <u>Child Care Operations(52)</u> | <u>Other Enterprise(58)</u> | <u>Internal Service(60)</u> | <u>Total</u> |
|---|-------------------------|----------------------------------|-----------------------------|-----------------------------|-----------------------|
| 3000 <u>Operation of Non-Instructional Services</u> | | | | | |
| 3100 Food Services | 2,529,984.95 | | | | 2,529,984.95 |
| Total Operation of Non-Instructional Services | \$2,529,984.95 | | | | \$2,529,984.95 |
| TOTAL ACTUAL EXPENDITURES & OTHER FINANCING USES | \$2,529,984.95 | | | | \$2,529,984.95 |

LEA : 103027503 Plum Borough SD

Printed 11/27/2024 11:15:31 AM

| Fund | School | School Number | Local Personnel | Local Nonpersonnel | State Personnel | State Nonpersonnel | Federal Personnel | Federal Nonpersonnel | Total | Explanation |
|------|-------------------------------|---------------|-----------------|--------------------|-----------------|--------------------|-------------------|----------------------|---------------|-------------|
| 10 | Holiday Park Intermediate Sch | 8354 | 4,717,643.39 | 532,773.77 | 3,375,772.30 | 381,233.34 | 249,580.69 | 28,185.69 | 9,285,189.18 | |
| | O'Block El Sch | 427 | 4,394,091.67 | 547,571.09 | 3,144,250.57 | 391,821.75 | 232,463.62 | 28,968.53 | 8,739,167.23 | |
| | Pivik El Sch | 7193 | 5,543,296.08 | 695,822.13 | 3,966,579.03 | 497,904.76 | 293,260.76 | 36,811.55 | 11,033,674.31 | |
| | Plum MS | 5105 | 4,262,157.66 | 652,420.74 | 3,049,843.44 | 466,848.32 | 225,483.82 | 34,515.46 | 8,691,269.44 | |
| | Plum SHS | 435 | 7,787,113.36 | 1,902,355.20 | 5,572,172.23 | 1,361,255.50 | 411,966.95 | 100,641.59 | 17,135,504.83 | |
| | Total | | 26,704,302.16 | 4,330,942.93 | 19,108,617.57 | 3,099,063.67 | 1,412,755.84 | 229,122.82 | 54,884,804.99 | |